

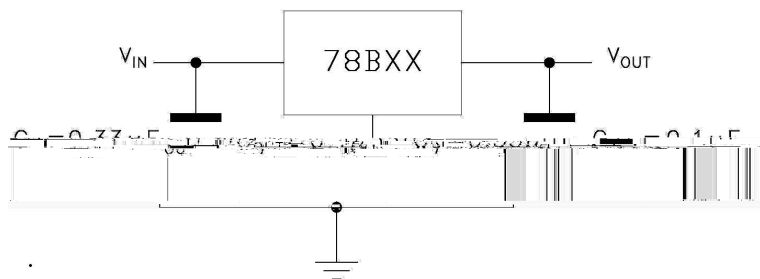
TO-263

Voltage Regulator in a TO-263 Plastic Package.

1.5A ,

3-Terminal regulators ,output current up to 1.5A, internal thermal overload protection and short-circuit limiting.

Voltage Regulator.



PIN1 IN

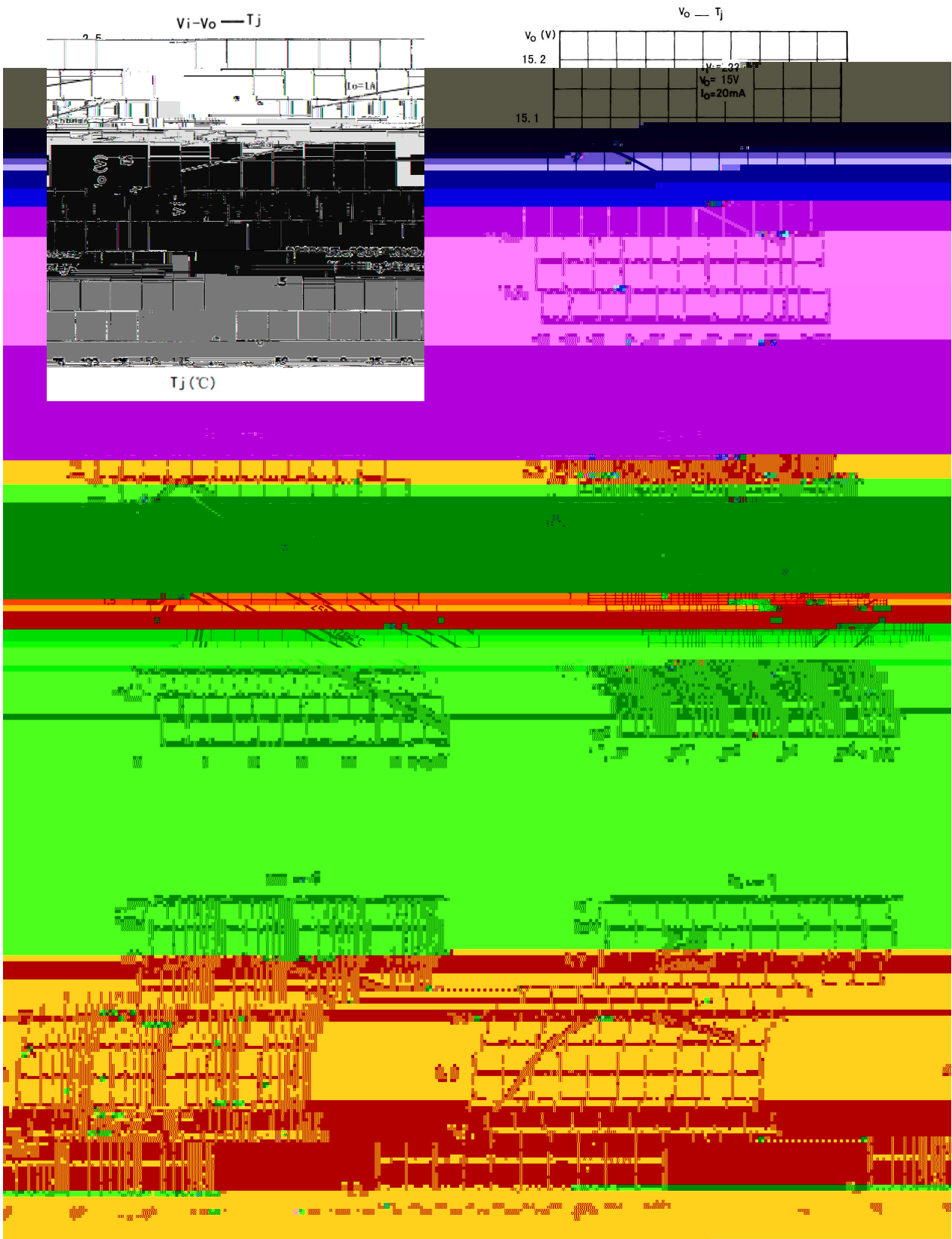
PIN 2 4 GND

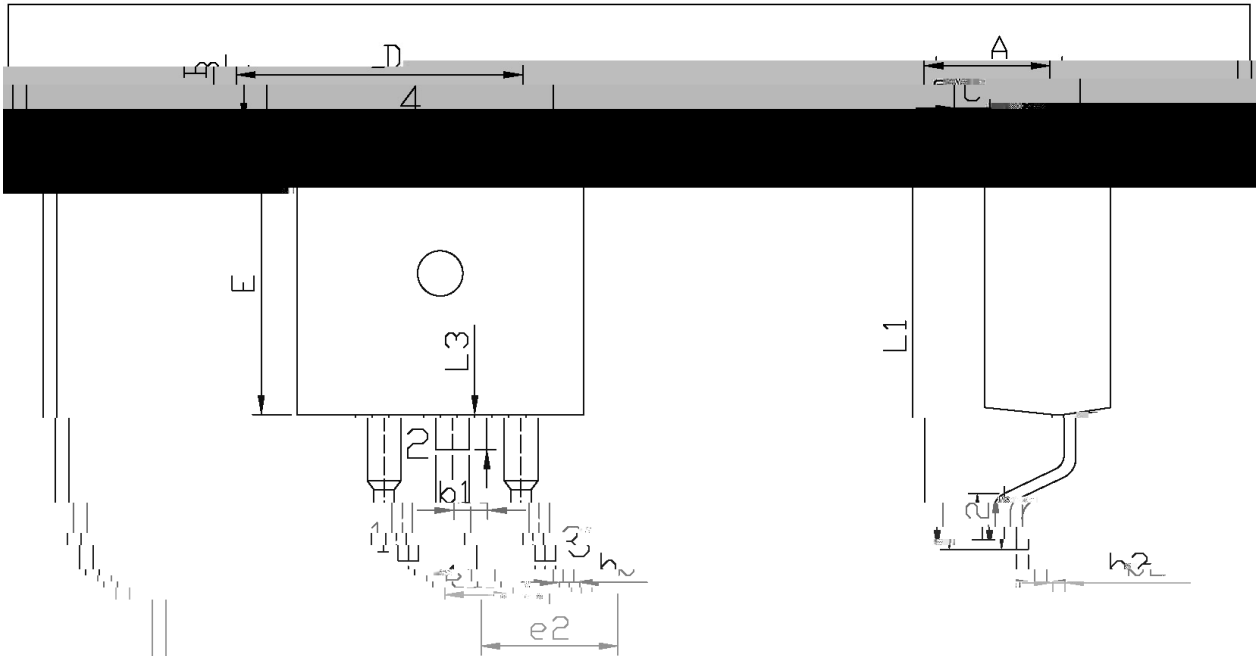
PIN 3 OUT

See marking instructions.

Parameter	Symbol	Rating	Unit
Input voltage	V_i	35	V
Thermal Resistance Junction to Ambient	R_{JA}	50	/W
Thermal Resistance Junction to Case	R_{JC}	5.0	/W
Operating Temperature Range	T_{OPR}	0 125	
Storage Temperature Range	T_{stg}	-65 150	

Parameter	Symbol	Test Conditions	Min	Typ	Max	Unit
Output voltage	V_o	$T_j=25$	14.4	15	15.6	V
		$V_i=17.5V-30V$ $I_o=5.0mA-1.0A$ PD 15W	14.25	15	15.75	V
Load Regulation	V_o	$T_j=25$ $I_o=5.0mA-1.5A$			300	mV
		$T_j=25$ $I_o=250mA-750mA$			150	mV
Line regulation	V_o	$T_j=25$ $V_i=17.5V-30V$			300	mV
		$T_j=25$ $V_i=20V-26V$			150	mV
Quiescent Current	I_d	$T_j=25$			8.0	mA
Quiescent Current Change	I_d	$V_i=17.5V-30V$			1.0	mA
		$I_o=5.0mA-1.0A$			0.5	mA
Output Voltage Drift	V_o/ T	$I_o=5.0mA$		-1.0		mV/
Output Noise Voltage	eN	B=10Hz-100KHz $T_j=25$		90		$\mu V/V_o$
Supply Voltage Rejection	SVR	$V_i=18.5V-28.5V$ $f=120Hz$	54			dB
Ripple Rejection	V_d	$I_o=1A$ $T_j=25$		2.0		V
Output Noise Voltage	R_o	$f=1.0KHz$		19		m
Short Circuit Current	I_{sc}	$V_i=35V$ $T_j=25$		0.23		A
Peak Current	I_{scp}	$T_j=25$		2.2		A

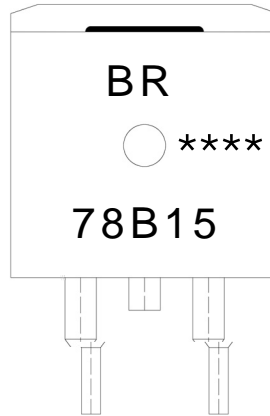




单位: mm

Dimensions in Millimeters		Dimensions in Millimeters		Dimensions in Millimeters	
Symbol	Dimension's in Millimeters	Symbol	Dimension's in Millimeters	Symbol	Dimension's in Millimeters
Max	Min	Max	Min	Max	Min
9.40		A	4.30	E	9.00
2.74		B	1.00	e1	2.24

I-263



BR

78B15

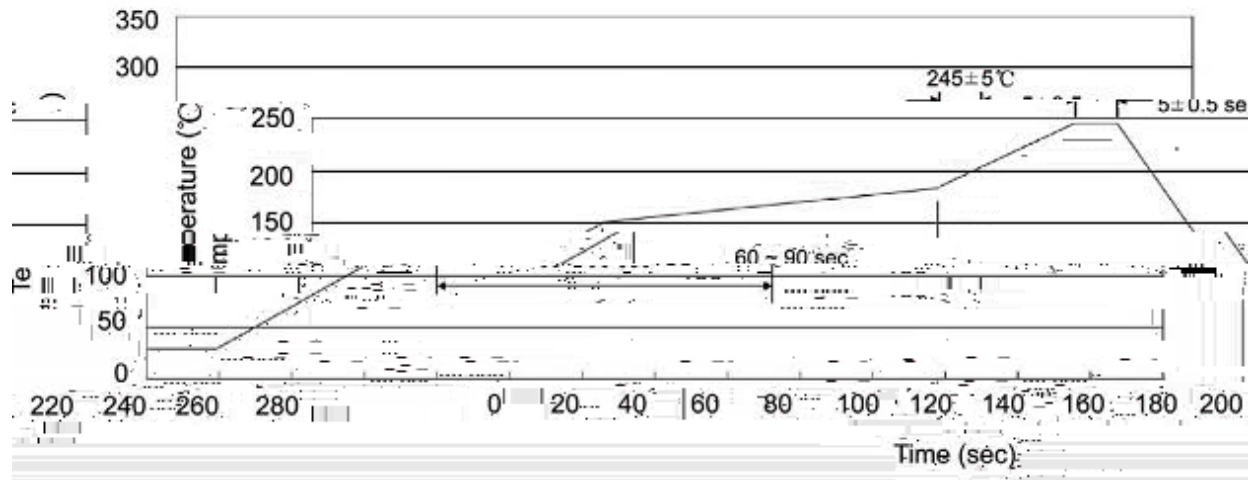
Note:

BR: Company Code.

78B15: Product Type.

****: Lot No. Code, code change with Lot No.

Temperature Profile for IR Reflow Soldering(Pb-Free)



Note:

1 150 180