

# 7808T

Rev.G Sep.-2023

5 é / Dp

9 5 : .> // x 9 ² ... ~ož Voltage Regulator in a SOT-89 Plastic Package.

α a / Fb

€ 19 ² ... ~k ÿ ß v ä S' Ä — ½ ' y ? è ' ò k —) í D } ož

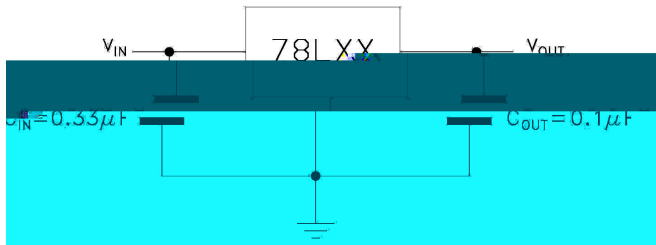
3-Terminal regulators, output current up to 100 mA, internal thermal overload protection and short-circuit limiting, HF Product.

Đ ÷ / Ap

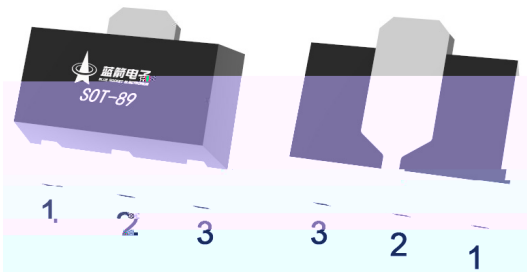
9 ² ... ~ož

Voltage Regulator.

Ã W ] Ô . / € Đ Ô . / Et Cb Ap Cb



• Ū - æ / B



PIN 1 y OUT

PIN 2 y GND

PIN 3 y IN

, M V / M

Marking

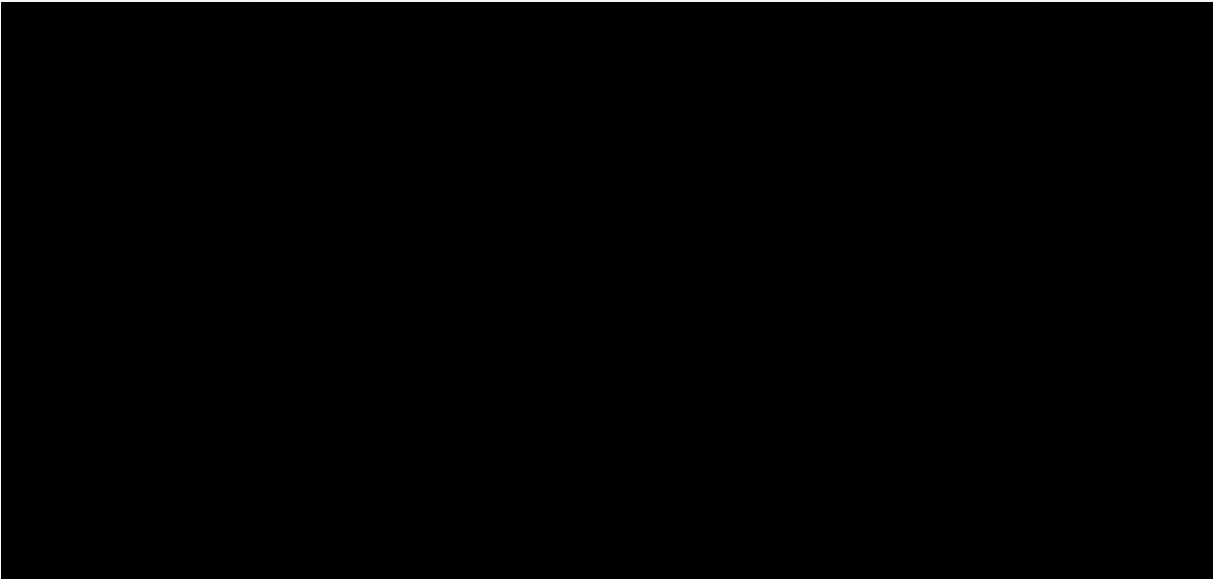
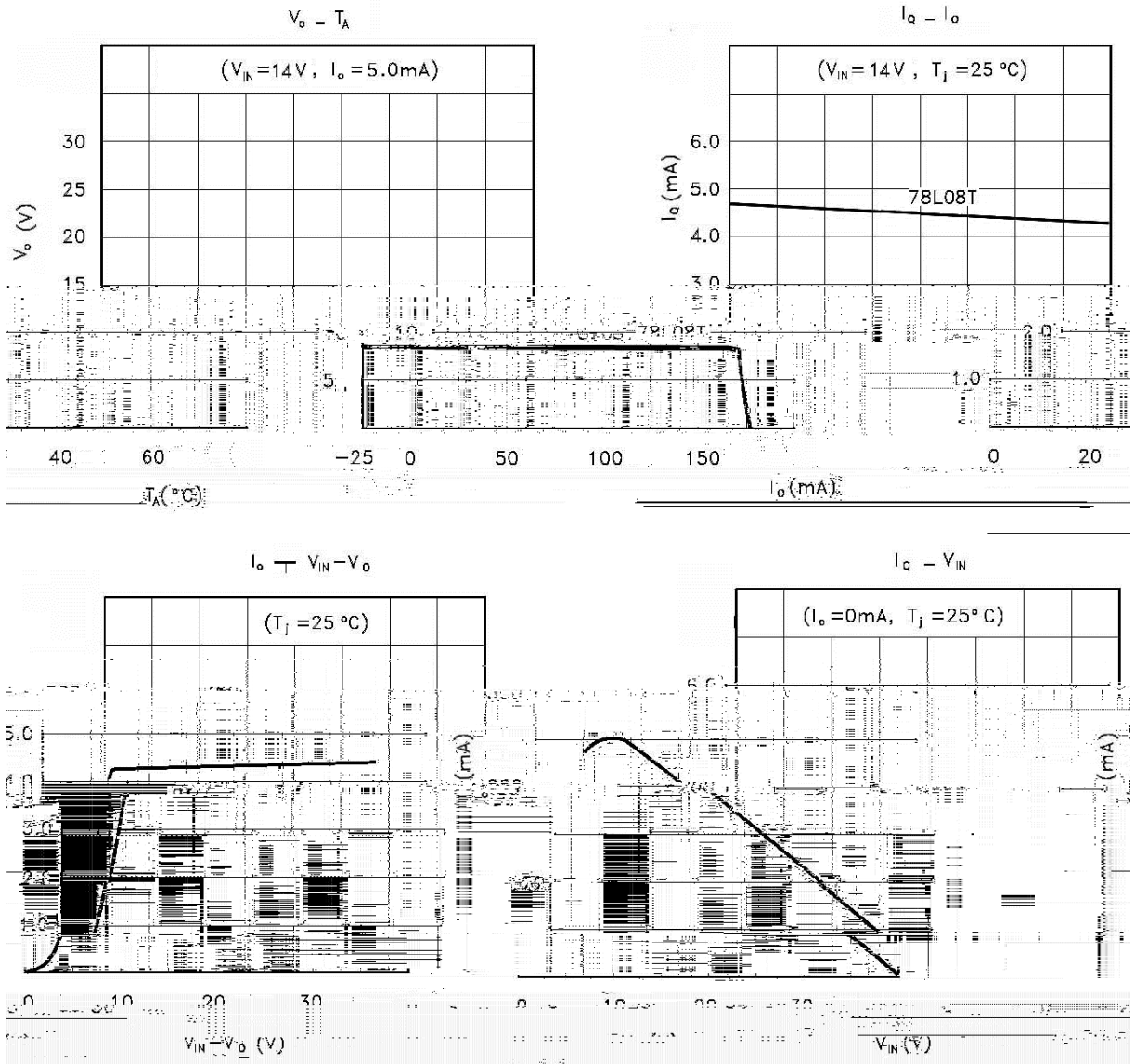
HL08 \*

@ f Parameter	... Z Symbol	f › Rating	% y Unit
Input voltage	V <sub>I</sub>	30	V
Output current	I <sub>O</sub>	100	mA
Operating virtual Junction temperature	T <sub>J</sub>	0 125	
Power Dissipation	P <sub>D</sub>	500	mW
Storage temperature range	T <sub>stg</sub>	-65 150	

@ f Parameter	... Z Symbol	y j Ú ^ Test Conditions	Â 4 › Min	Â ° › Typ	Â Ý › Max	% y Unit
Output voltage	V <sub>O</sub>	I <sub>O</sub> =40mA T <sub>J</sub> =25	7.7	8.0	8.3	V
		I <sub>O</sub> =1mA to 40mA V <sub>I</sub> =10.5V to 23V	7.6	8.0	8.4	V
		I <sub>O</sub> =1mA to 70mA V <sub>I</sub> =14V	7.6	8.0	8.4	V
Input regulation	. V <sub>O</sub>	V <sub>I</sub> =10.5V to 23V T <sub>J</sub> =25		42	175	mV
		V <sub>I</sub> =11V to 23V T <sub>J</sub> =25		36	125	mV
Ripple rejection	RR	V <sub>I</sub> =13V to 23V f=120Hz T <sub>J</sub> =25	37	46		dB
Output regulation	. V <sub>O</sub>	I <sub>O</sub> =1mA to 100mA T <sub>J</sub> =25		18	80	mV
		I <sub>O</sub> =1mA to 40mA T <sub>J</sub> =25		10	40	mV

18.42

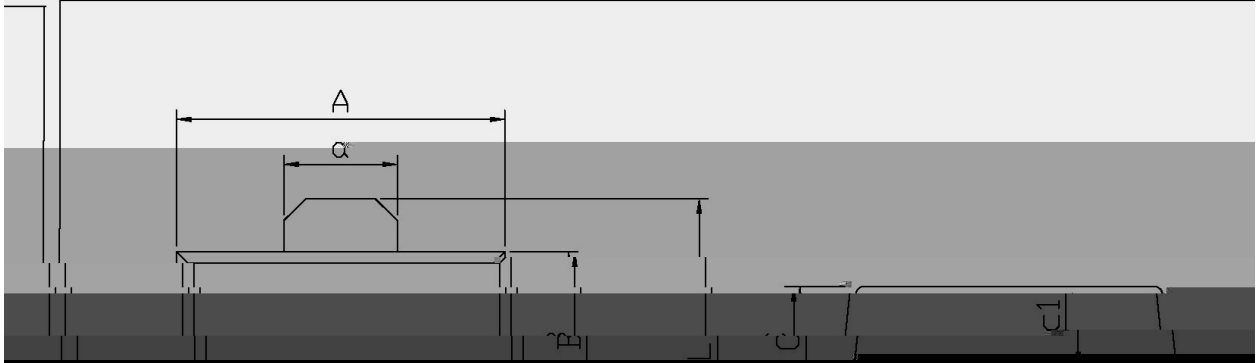
Ô ? d • Ž ç / EEE



Ø □ = ) φ / □ in

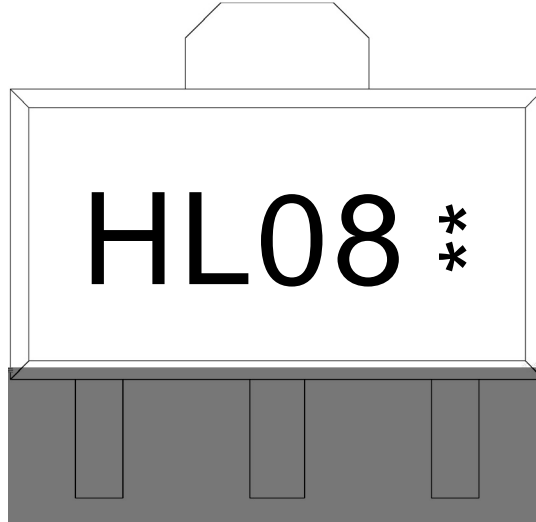
1 2 3 4 5 6 7 8 9

单位: mm



序号	名称	规格	数量	备注
1	...	...	...	...
2	...	...	...	...
3	...	...	...	...
4	...	...	...	...
5	...	...	...	...
6	...	...	...	...
7	...	...	...	...
8	...	...	...	...
9	...	...	...	...

, My f / Mb



ay

H y , [ W A

L08 y ° Z W A

y y D Z W A k š y D Z J

Note:

H: Company Code

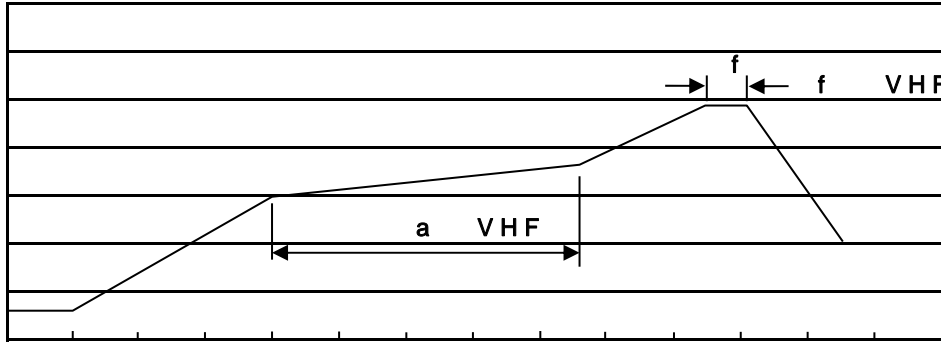
L08: Product Type

\*\* : Lot No. Code, code change with Lot No



šWD t...•Žϕ (x/ ) / :KSVKXGZ[XK 6XULORK LUX /8 8KLRU] 9URJKXOTM 6

7HPSHUDWXUH



7LPH VHF

a ϕ y

1o• Ä ½ “ † 150 ½180 - k ž • 60 ½90sec;

2o• Q † “ † 245 r5 - k ž • 4 Ò 5 r0.5sec;

3o•D N ò i Ò 0 , † 2 ½10 - /sec.

Note:

1.Preheating:150~180 - , Time:60~90sec.

2.Peak Temp.:245 r5 - , Duration:5 r0.5sec.

3. Cooling Speed: 2~10 - /sec.

ÂD /Că p ~ » ] / 89HCH

“ † y 260 r5 -

ž • y 10 r1 sec.

Temp.:260±5

Time:10±1 sec

G P á / 9C.

2 & x / REEL

Package Type 7>û ~ E	Units ;>û !H					Dimension ;>û p . (unit /Æmm³)		
	Units/Reel /--	Reels/Inner Box -- /-	Units/Inner Box /-	Inner Boxes/Outer Box - /!ç	Units/Outer Box /!ç	Reel	Inner Box	Outer Boxç
SOT-89	1,000	7	7,000	6	42,000	7 s x12	180x120x180	390x385x205

„Đ y f / 4