

/ Descriptions

0.8A ABS/LBF
0.8A Surface Mount Glass Passivated Bridge Rectifier ABS/LBF thin package.

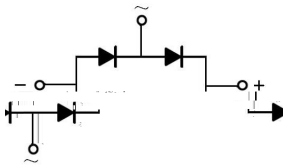
/ Features

Glass Passivated Chip Junction, Reverse Voltage :100 to 1000V,Forward Current: 0.8A,High Surge Current Capability, Designed for Surface Mount Application. Halogen free product.

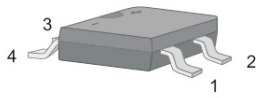
/ Applications

General purpose.

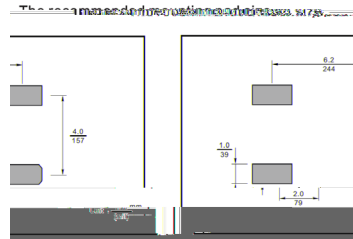
/ Equivalent Circuit



/ Pinning



PIN	DESCRIPTION
1	Input Pin (~)
2	Input Pin (~)
3	Output Anode (+)
4	Output Cathode (-)



/ Marking

See Marking Instructions.

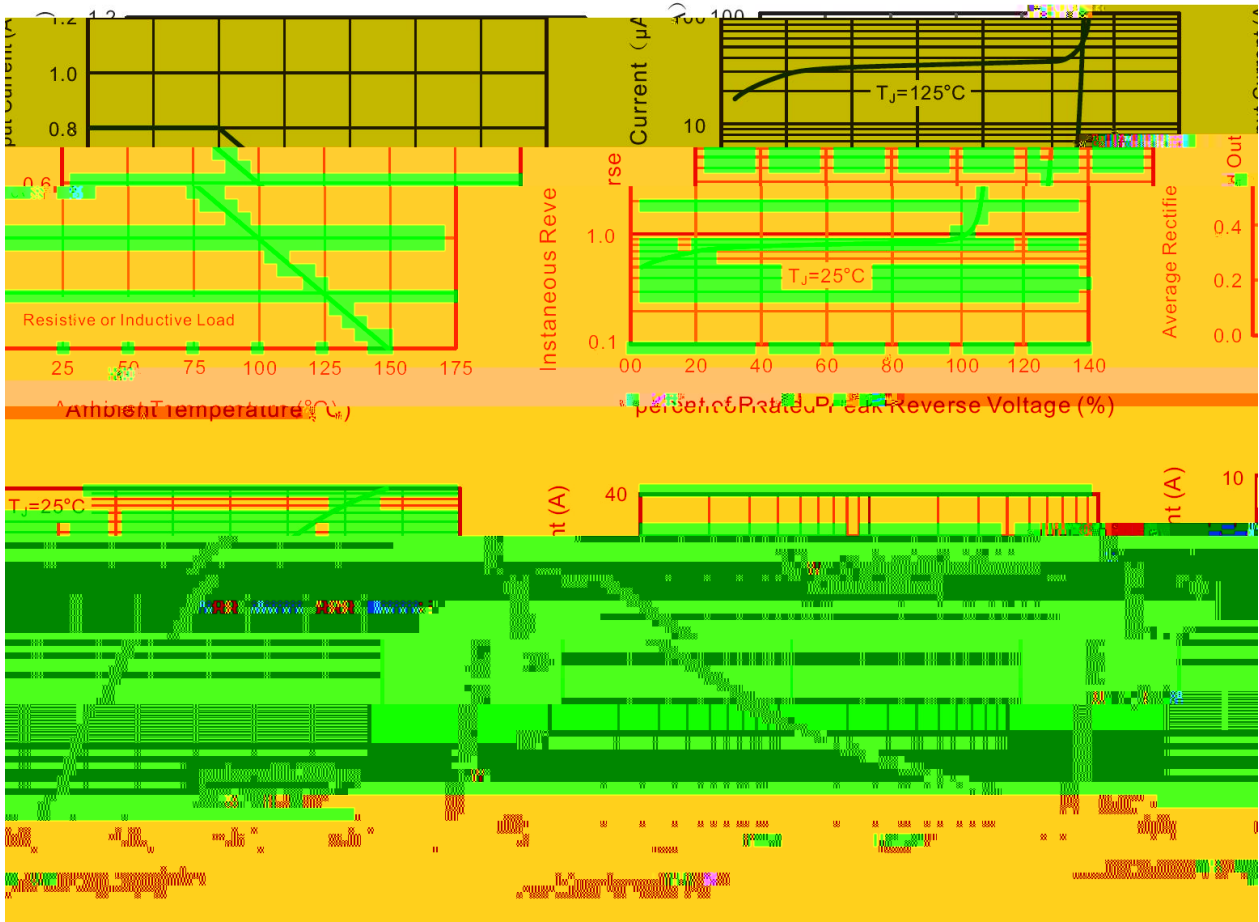
Parameter	Symbol	Rating						Unit
		ABS1	ABS2	ABS4	ABS6	ABS8	ABS10	
Maximum Repetitive Peak Reverse Voltage	V_{RRM}	100	200	400	600	800	1000	V
Maximum RMS voltage	V_{RMS}	70	140	280	420	560	700	V
Maximum DC Blocking Voltage	V_{DC}	100	200	400	600	800	1000	V
Average Rectified Output Current at $T_a = 40\text{ }^{\circ}\text{C}$	I_o	0.8						A
Peak Forward Surge Current 8.3 ms Single Half Sine Wave Superimposed on Rated Load (JEDEC Method)	I_{FSM}	30						A
Typical Junction Capacitance <small>Note1</small>	C_i	13						pF
Typical Thermal Resistance <small>Note2</small>	R_{JA}	85						/W
	R_{JL}	30						/W
Operating and Storage Temperature Range	T_j, T_{stg}	-55~150						

Note:

1. Measured at 1MHz and applied reverse voltage of 4 V D.C.
2. Mounted on glass epoxy PC board with 4 (5 5mm² copper pad.

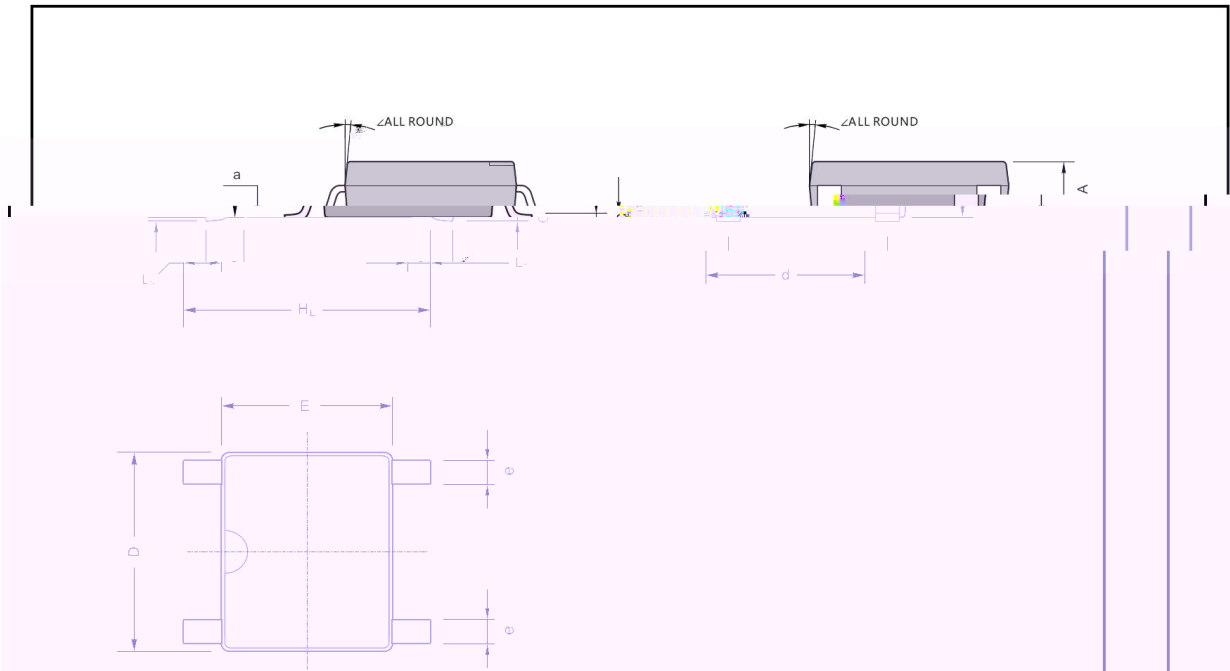
Parameter	Symbol	Test Conditions	Rating	Unit
Forward Voltage per element	V_F	$I_F=0.4A$	1.0	V
		$I_F=0.8A$	1.1	
Maximum DC Reverse Current at Maximum DC Blocking Voltage	I_R	$T_a=25$	5.0	μA
		$T_a=100$	50	
		$T_a=125$	100	

/ Electrical Characteristic Curve



/ Package Dimensions

ABS/LBF



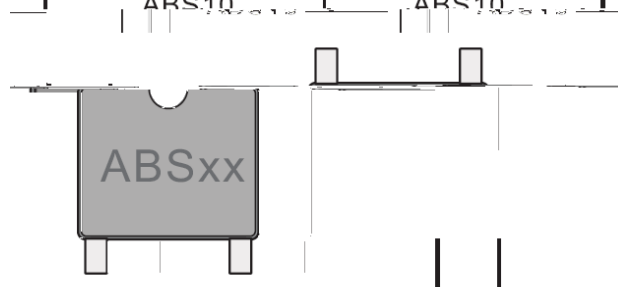
ABS/LBF mechanical data

UNIT		A	C	D	E	H _E	d	e	L	L ₁	a	∠
mm	max	1.5	0.22	5.2	4.5	6.4	4.2	0.7	0.95	0.6	0.2	
	min	1.3	0.15	4.9	4.2	6.0	3.8	0.5				7°
	max	0.50	0.87	2.05	1.77	2.52	1.65	0.28				
	min	0.51	0.50	1.92	1.66	2.36	1.50	0.25	37	24	4	

/ Marking Instructions

Marking

Type number	Marking code
ABS1	ABS1
ABS2	ABS2
ABS4	ABS4
ABS6	ABS6
ABS8	ABS8
ABS10	ABS10



/ Marking Instructions



ABS1

1 *

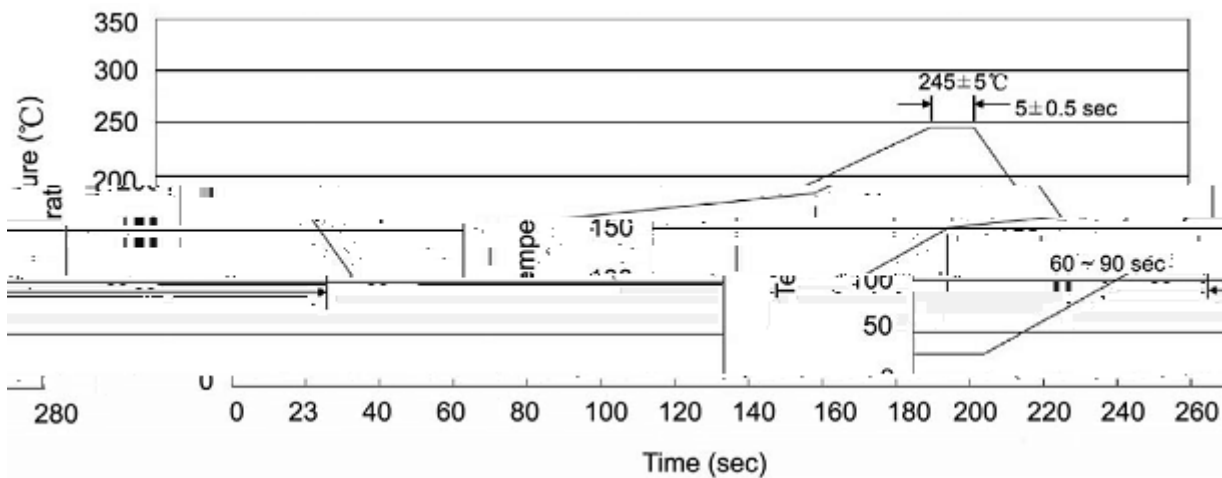
3 *

Note:

ABS1 Product Type Code

**** Lot No. Code The 1st * means:YM Code The last 3 * means:little Lot No
Code

() /



Note:

- | | | | | | |
|---|--------|-----|------------|--------|---|
| 1 | 25 | 150 | 60 | 90sec; | 1.Preheating:25~150 , Time:60~90sec. |
| 2 | 245..5 | | 5..0.5sec; | | 2.Peak Temp.:245..5 , Duration:5..0.5sec. |
| 3 | | 2 | 10 | /sec. | 3. Cooling Speed: 2~10 /sec. |

/ Resistance to Soldering Heat Test Conditions

260..5 10..1 sec. Temp.:260±5