



# BR2SB1198MC

Rev.A Mar.-2023

@ f Parameter	... Z Symbol	f › Rating	% y Unit
Collector to Base Voltage	V <sub>CBO</sub>	-80	V
Collector to Emitter Voltage	V <sub>CEO</sub>	-80	V
Emitter to Base Voltage	V <sub>EBO</sub>	-5	V
Collector Current - Continuous	I <sub>C</sub>	-500	mA
Collector Power Dissipation	P <sub>C</sub>	200	mW
Junction Temperature	T <sub>j</sub>	150	-
Storage Temperature Range	T <sub>stg</sub>	-55 ½150	-

@ f Parameter	... Z Symbol	y j Ú ^ Test Conditions	Â 4 › Min	Á ° › Typ	Â Ý › Max	% y Unit
Collector to Base Breakdown Voltage	V <sub>CBO</sub>	I <sub>C</sub> =-50 A	-80			V
Collector to Emitter Breakdown Voltage	V <sub>CEO</sub>	I <sub>C</sub> =-2mA	-80			V
Emitter to Base Breakdown Voltage	V <sub>EBO</sub>	I <sub>E</sub> =-50 A	-5			V
Collector Base Cut-Off Current	I <sub>CB0</sub>	V <sub>CB</sub> =-50 V I <sub>E</sub> =0			-0.5	A
Collector Emitter Cut-Off Current	I <sub>CE0</sub>	V <sub>CE</sub> =-65 V I <sub>B</sub> =0			-5	A
Emitter Base Cut-Off Current	I <sub>EB0</sub>	V <sub>EB</sub> =-4.0V I <sub>C</sub> =0			-0.5	A

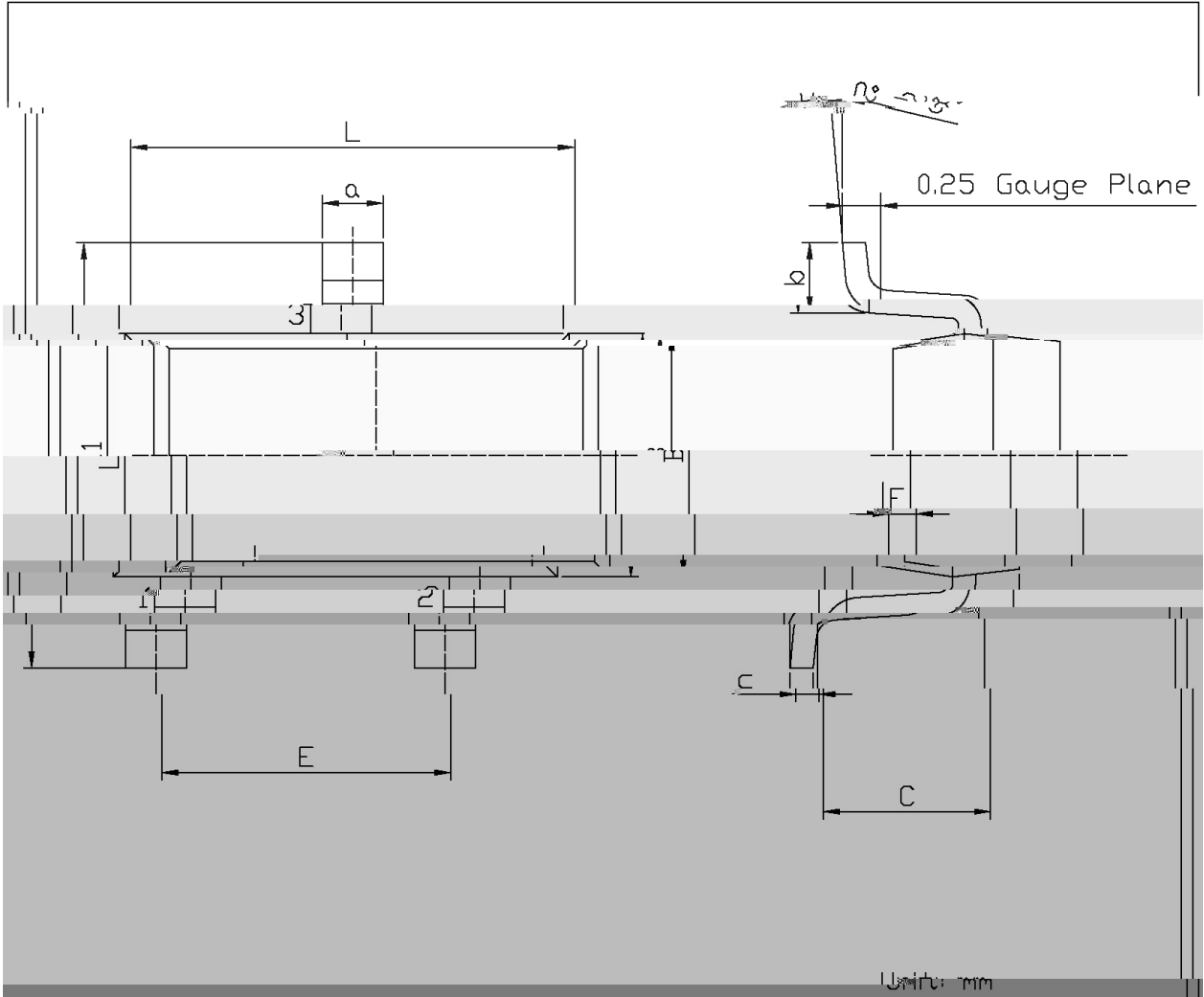
Eh|Tj 7.0172 0 0 7.02 24157 351.8803 Tm -.00238Tc 0 Tw (EF)Tj 10.4958 0 0 10.5 295464 .20.3604 Tm - Tc ( )Tj 1

# BR2SB1198MC

Rev.A Mar.-2023

DATA SHEET

$\varnothing \square = ) \phi$  / Package Dimensions



Dimension	Symbol	Value	Unit
Length	L		mm
Width	a		mm
Distance	E		mm
Width	C		mm
Distance	F		mm

Marking Instructions



Marking

Marking [WA

Marking °ZWA

Marking hFE ã WA

Note:

H: Company Code

AK: Product Type Code

R: hFE Classifications Symbol Code

# BR2SB1198MC

Rev.A Mar.-2023

šWD t...•Žç (x/ ) / :KSVKXGZ[XK 6XULORK LUX /8 8KLRU] 9URJKXOTM 6


ª ç y

1o• Ä ½ “ † 150 ½180 - k ž • 60 ½90sec;

2o• Q › “ † 245 r5 - k ž • 4 Ò 5 r0.5sec;

3o•D N ò i Ò 0 , † 2 ½10 - /sec.

Note:

1.Preheating:150~180 - , Time:60~90sec.

2.Peak Temp.:245 r5 - , Duration:5 r0.5sec.

3. Cooling Speed: 2~10 - /sec.

## ÂD /Cã p ~ » ] / Resistance to Soldering Heat Test Conditions

“ † y 260 r5 -

ž • y 10 r1 sec.

Temp.:260 r5 -

Time:10 r1 sec

## G P á / Packaging SPEC.

2 & x / REEL

Package Type 7>û ~ E	Units ;>û !H					Dimension ;>û p . (unit Åmm³)		
	Units/Reel / --	Reels/Inner Box -- /-	Units/Inner Box /-	Inner Boxes/Outer Box - /!ç	Units/Outer Box /!ç	Reel	Inner Box	Outer Boxç
SOT-23-3	3,000	10	30,000	4	120,000	7 s x8	210x205x205	445x230x435

## „Đ y f / Notices