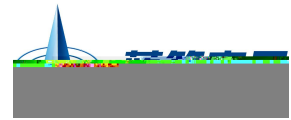


BR431
Rev.E Jan.-2022



DATA SHEET

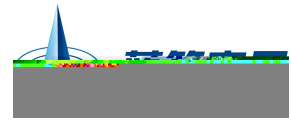
TO-92
Precision adjustable shunt regulator in a TO-92 Plastic Package.

2.50

3□

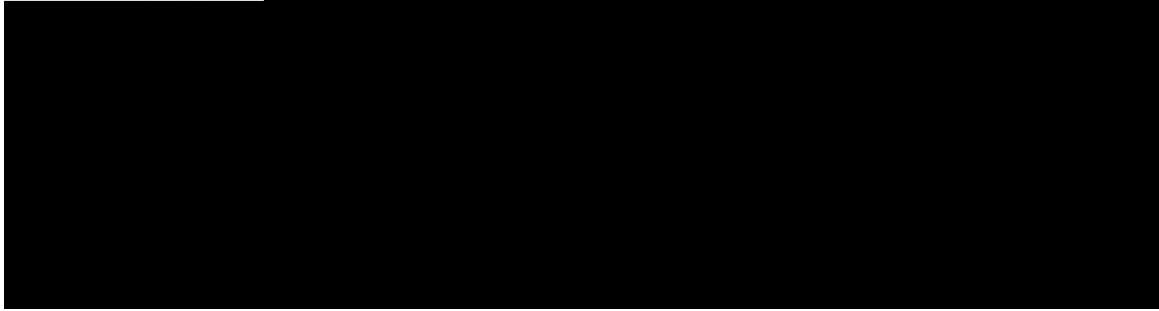
-

BR431
Rev.E Jan.-2022

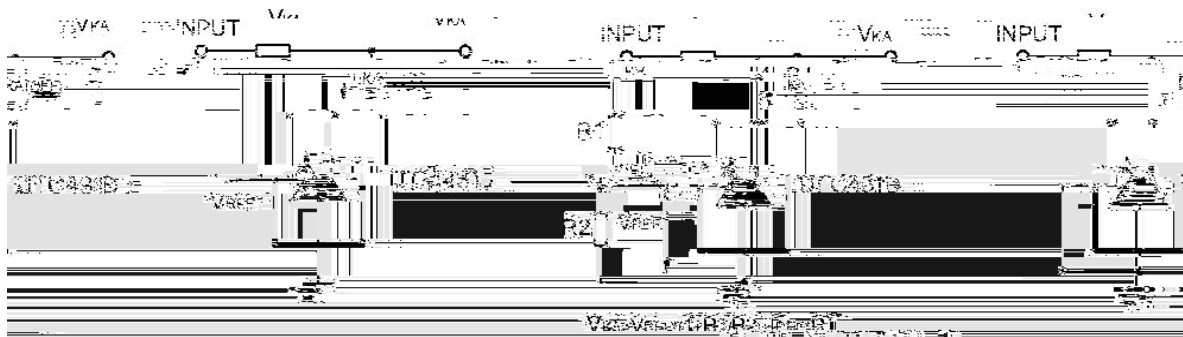


& Test circuits&Typical Application

BLOCK DIAGRAM:



TEST CIRCUITS:

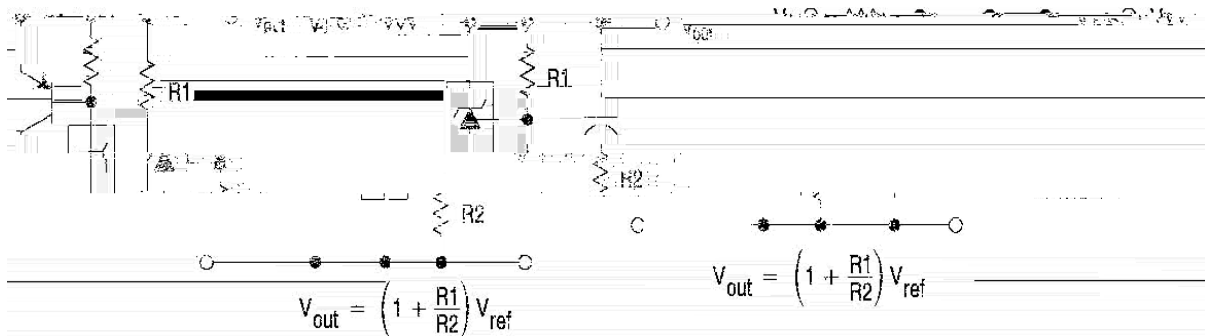


Test Circuit For VKA=VREF

Test Circuit for VKA VREF

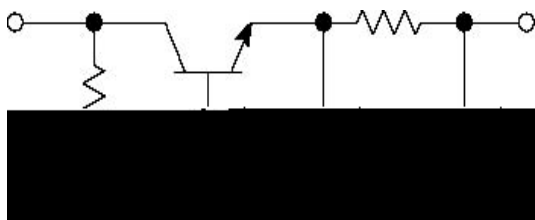
Test Circuit For IK(A)OFF

TYPICAL APPLICATION:

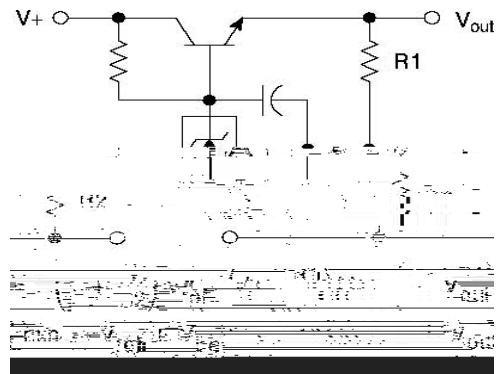


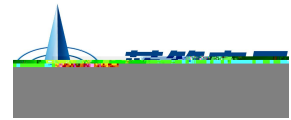
Shutdown Regulator

Higher-current Shunt

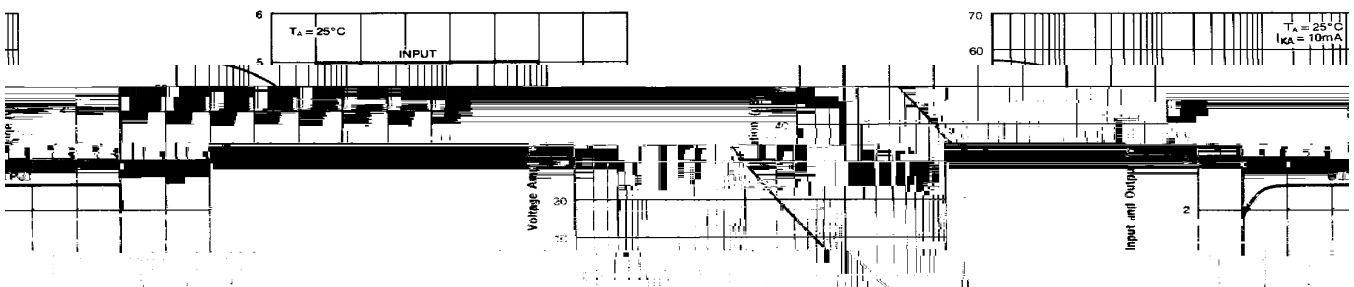
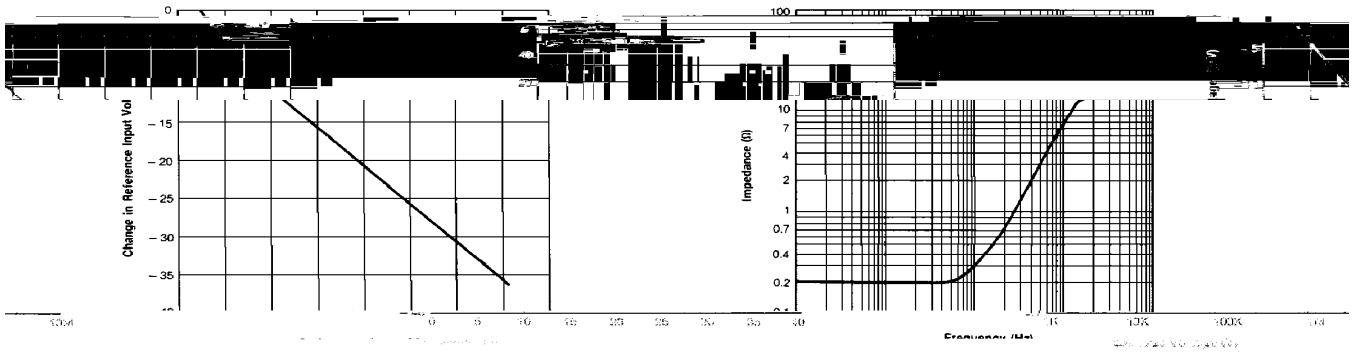
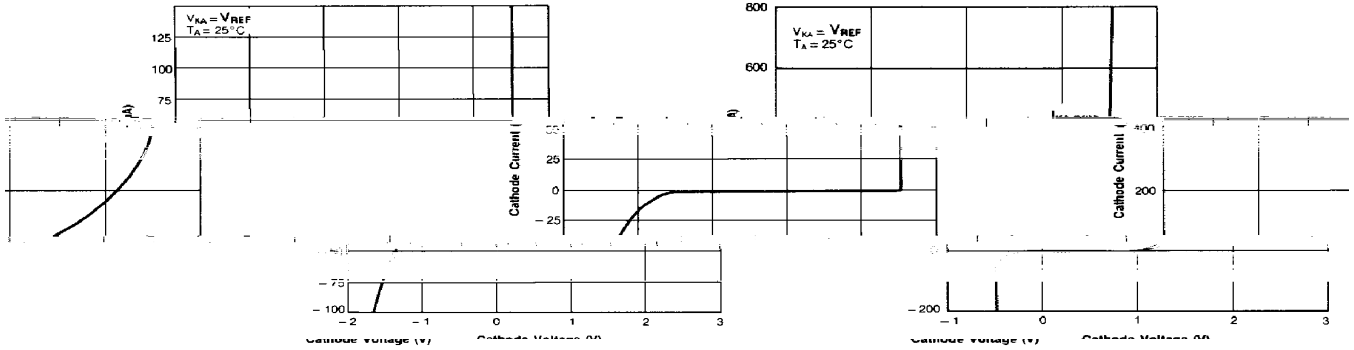


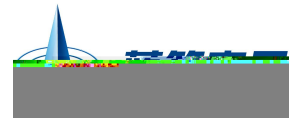
Constant Current Source



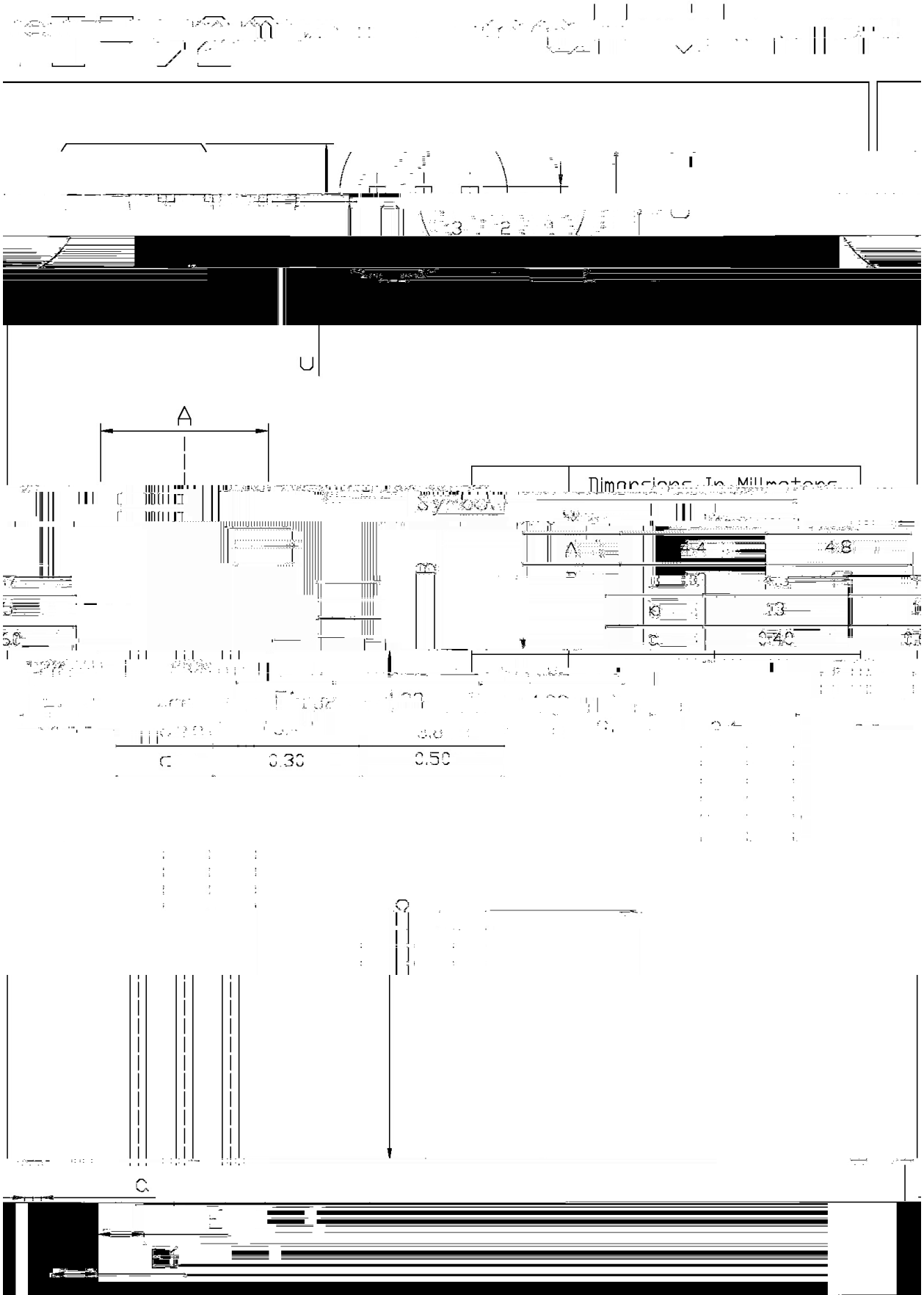


/ Electrical Characteristic Curve

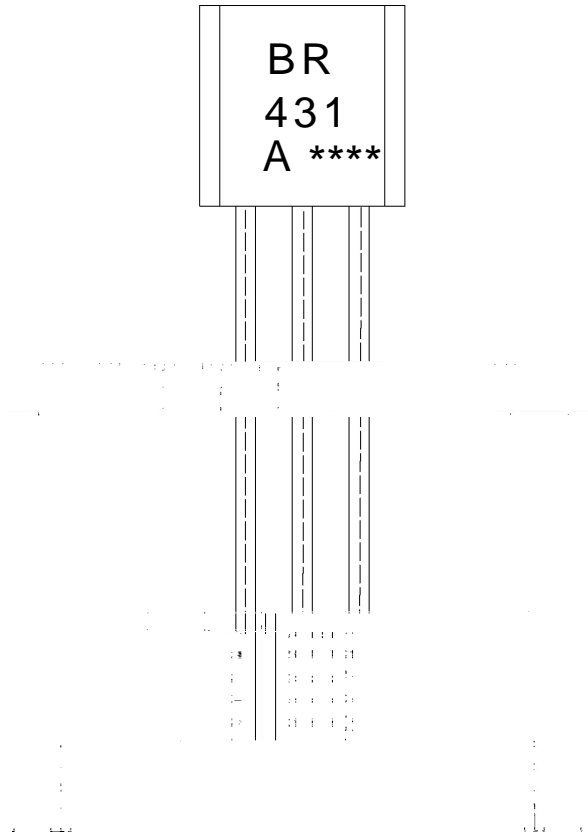




/ Package Dimensions



/ Marking Instructions



说明：

BR： 为公司代码

431： 为型号代码

A： 为 V_{REF} 分档代码

****： 为生产批号代码，随生产批号变化

Note:

BR: Company Code.

431: Product Type Code.

A: V_{REF} Classifications Symbol

****: Lot No. Code, code change with Lot No

