

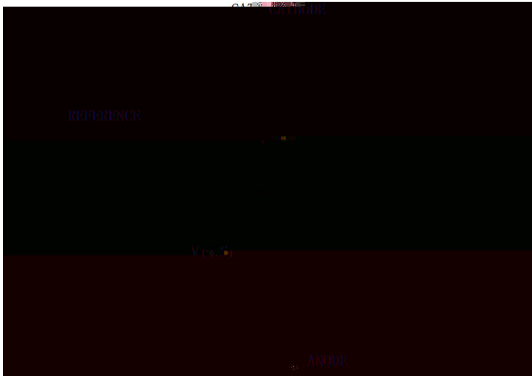
SOT-23

Precision adjustable shunt regulator in a SOT-23 Plastic Package.

1.250V                      0.5% 1%                      100uA 100mA  
 $V_O = V_{ref} - 20V$                       ( :55 $\mu$ A)                      ( :0.05 )

Precise reference voltage to 1.250V,guaranteed 0.5%,1% ,reference voltage Tolerance, sink current capability,100uA 100mA,quick turn-on, adjustable output voltage,  $V_O = V_{ref} - 20V$ ,low operational cathode current,55 A typical,0.05 typical output impedance.

Linear regulators, adjustable power supply, switching power supply.

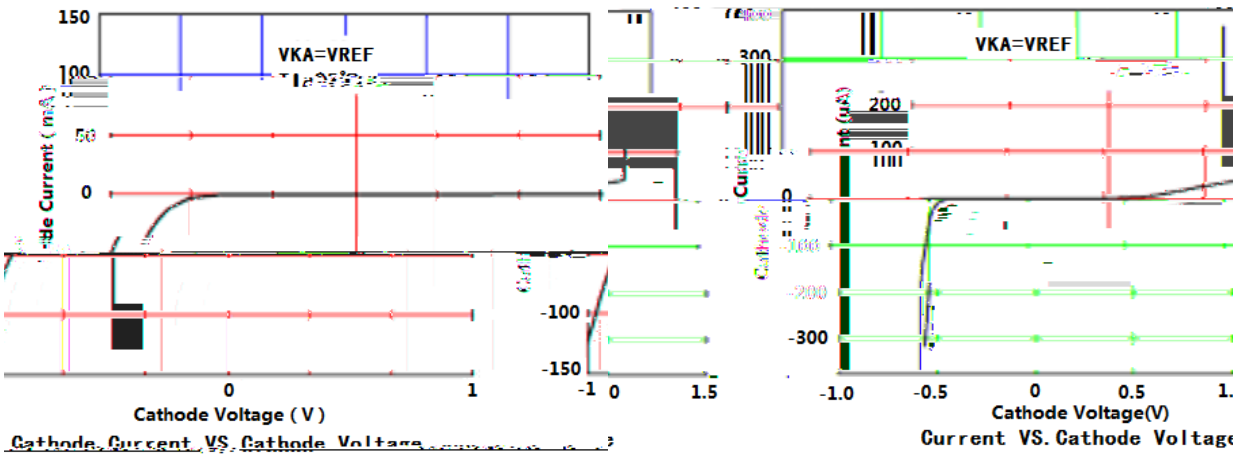
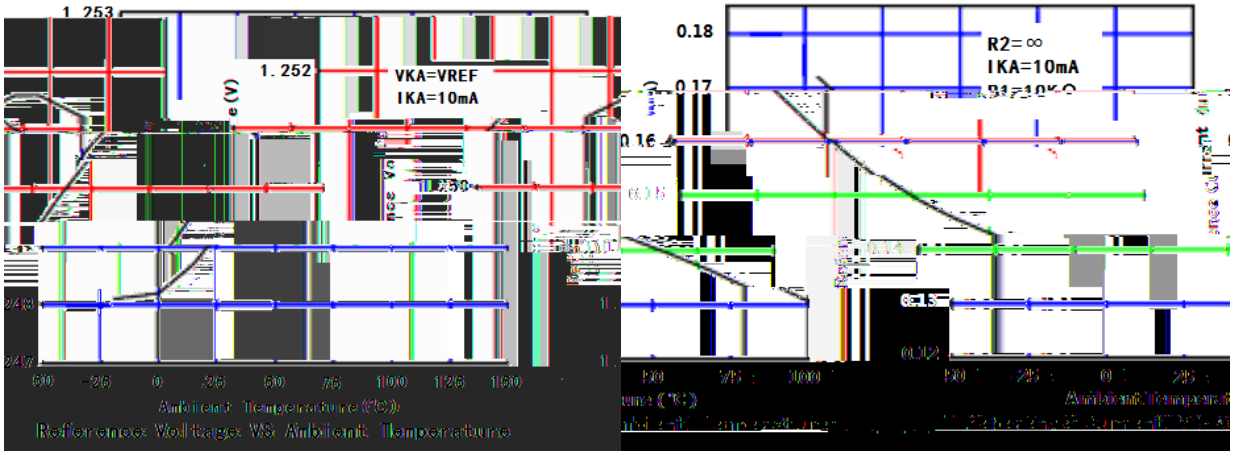


PIN1 R                      PIN 2 K                      PIN 3 A 7

**BR432M**  
Rev.A Jun.-2018

**DATA SHEET**

/ Electrical Characteristic Curve

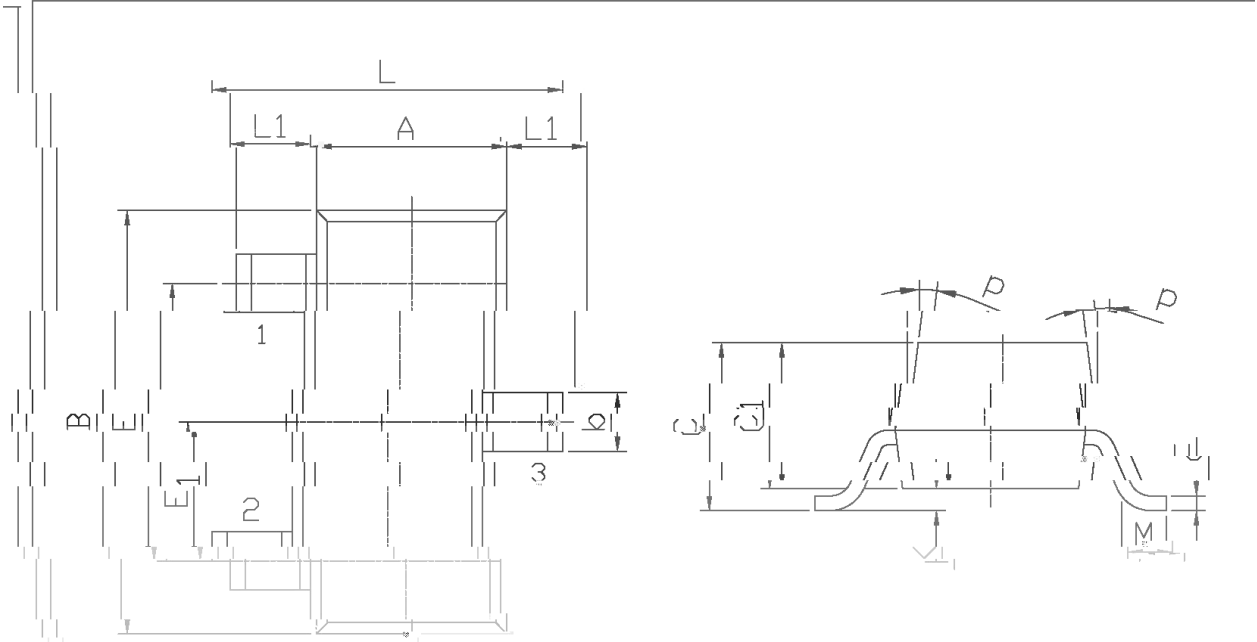




/ Package Dimensions

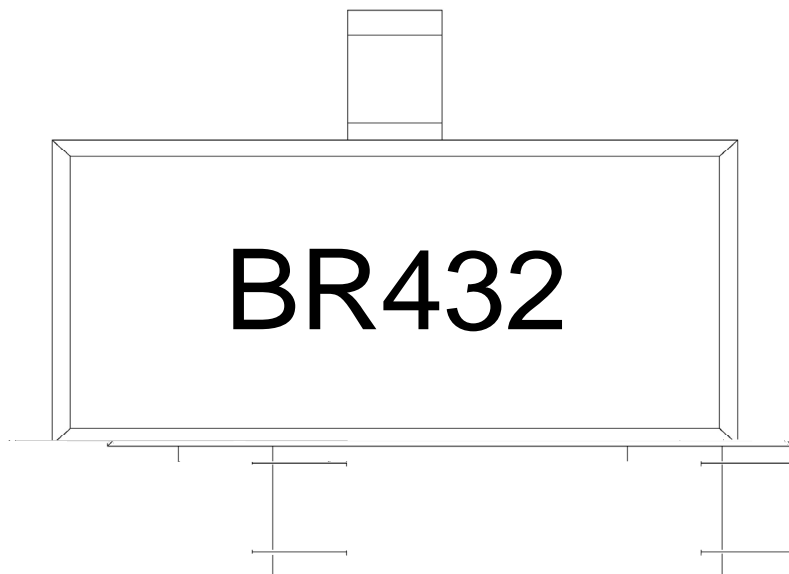
SOT-23

单位: mm



Dimension in Millimeters			Dimension in Millimeters		
Symbol	Min.	Max.	Symbol	Min.	Max.
L	2.2	2.7	C	1.30Max	
L1	0.45	0.65	C1	0.90	1.20
A	1.15	1.50	C	0.95	0.28

/ Marking Instructions



BR

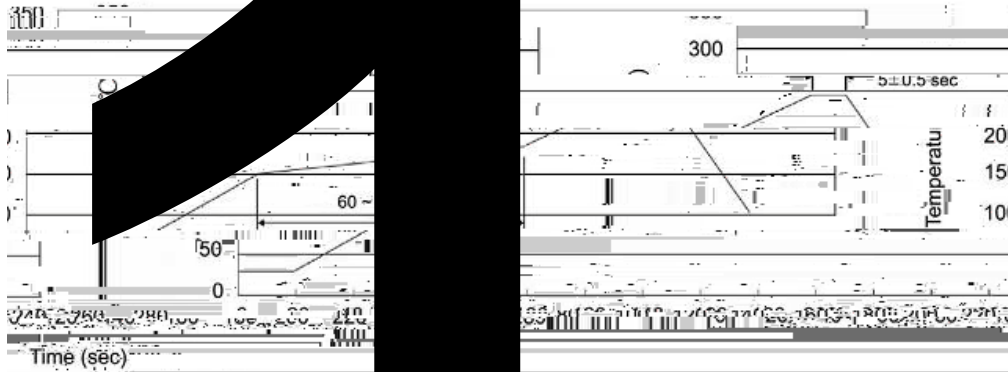
432

Note:

BR: Company Code.

432: Product Type.

( ) / Temperature Profile for IR Reflow Soldering(Pb-Free)



- 1 150 180 60 90
- 2 245±5 5±0.5
- 3 2~10 /sec.

Note:

- 1.Preheating:150~180 , Time:60~90sec.
- 2.Peak Temp.:245±5 , Duration:5± 0.5sec.
- 3. Cooling Speed: 2~10 /sec.

/ Resistance to Heat Test Conditions

260±5 10±1 sec

Temp.:260±5 Time:10±1 sec

/ Packaging SPEC.

/ REEL

Package Type