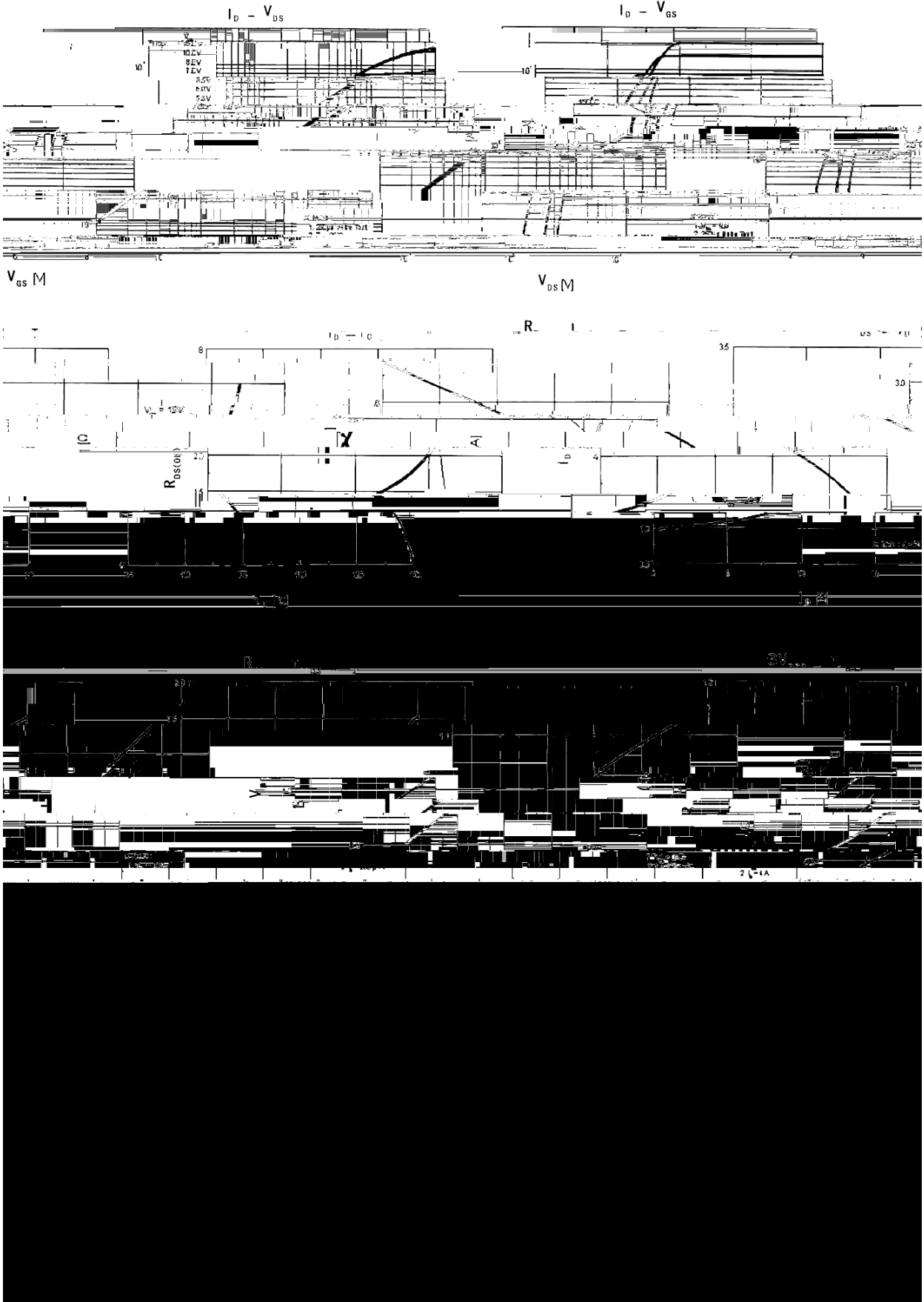


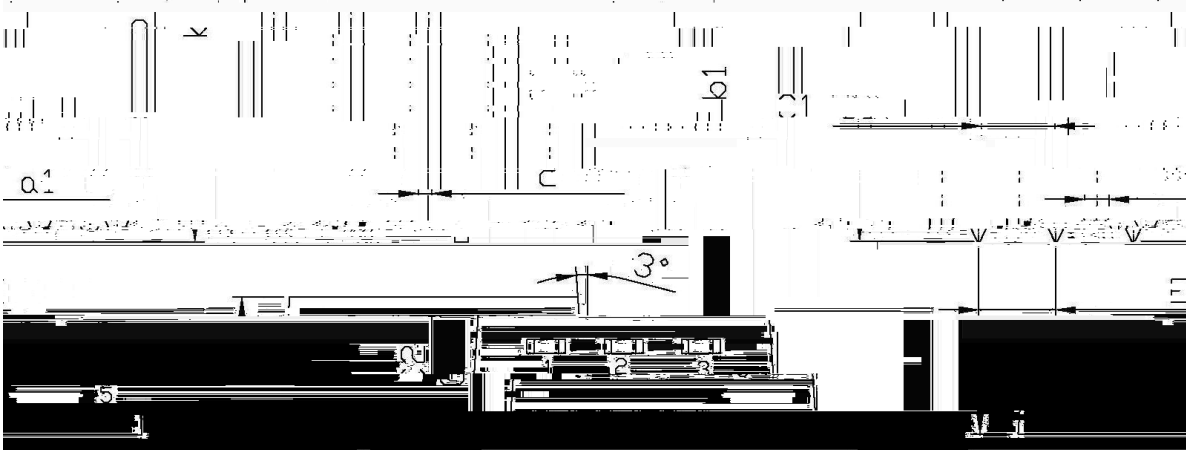
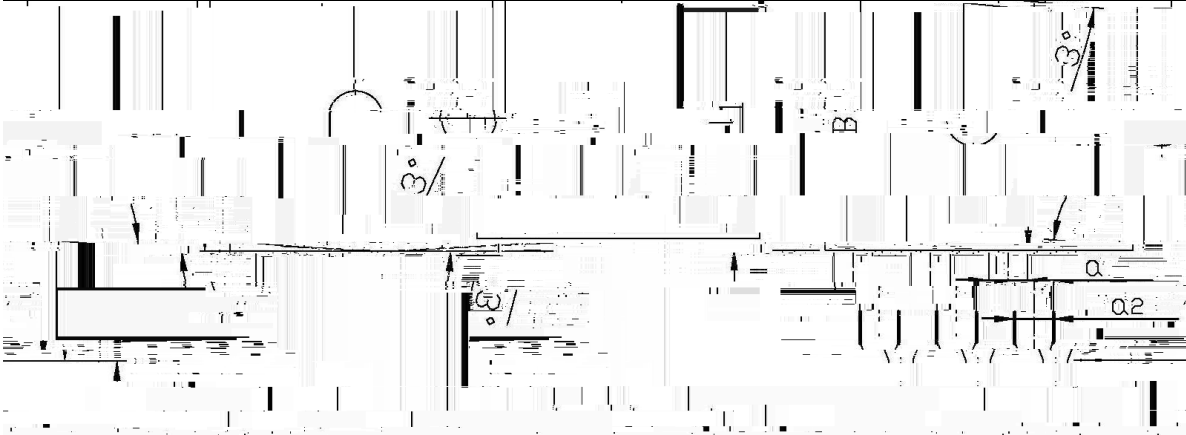
BR8N60

Parameter	Symbol	Rating	Unit
Drain-Source Voltage	V_{DSS}	600	V
Drain Current	$I_D(T_C=25^\circ\text{C})$	8	A
Drain Current	$I_D(T_C=100^\circ\text{C})$	4.6	A
Drain Current - Pulsed	I_{DM}	30	A
Gate-Source Voltage	V_{GSS}	± 30	V
Single Pulsed Avalanche Energy	E_{AS}	230	mJ
Repetitive Avalanche Energy	E_{AR}	10	mJ
Avalanche Current	I_{AR}	7.5	A
Power Dissipation			

/ Electrical Characteristic Curve

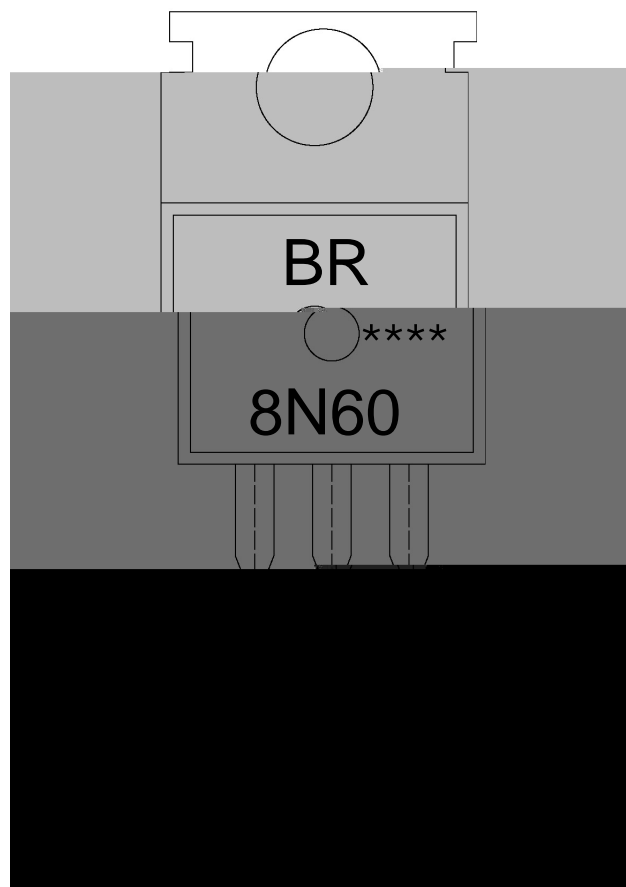


/ Package Dimensions



Dimensions in Millimeters			Dimensions in Millimeters		
Symbol	Min	Max	Symbol	Min	Max
A	9.8	10.2	C	1.2	1.4
B	3.56	3.64	D	6.3	6.4
E	5.7	6.1	F	9.0	9.4
G	2.0	2.5	H	2.0	2.5
I	0.25	0.45	J	0.25	0.45

/ Marking Instructions



BR

8N60

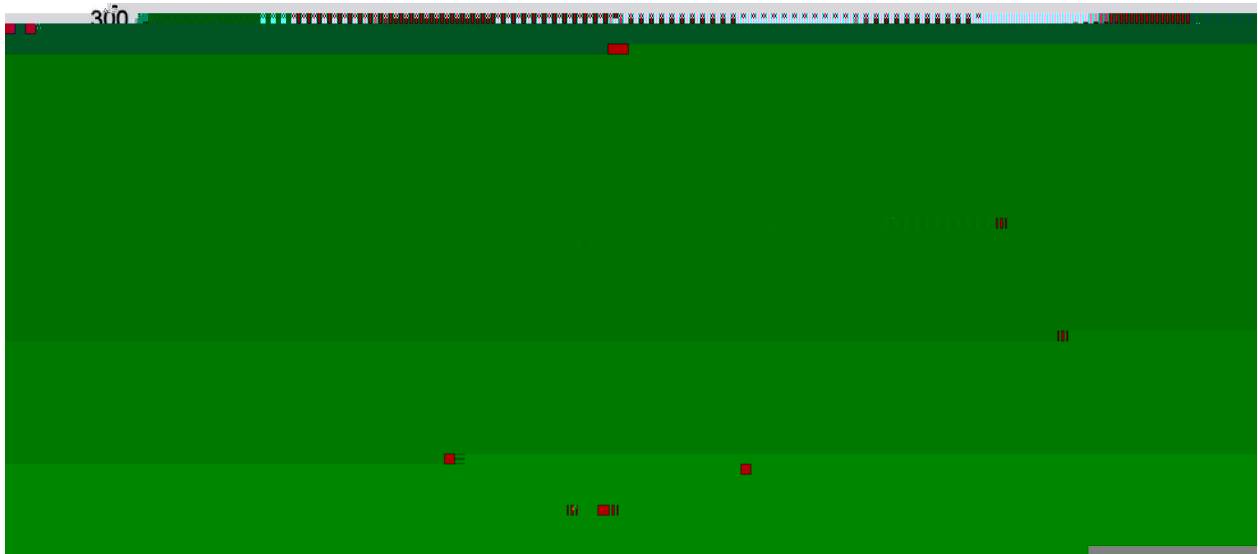
Note:

BR: Company Code

8N60: Product Type.

****: Lot No. Code, code change with Lot No.

() / **Temperature Profile for Dip Soldering(Pb-Free)**



Note:

- | | | | | | |
|---|-------|-----|-----------|--------|---|
| 1 | 25 | 150 | 60 | 90sec; | 1.Preheating:25~150 , Time:60~90sec. |
| 2 | 255±5 | | 5±0.5sec; | | 2.Peak Temp.:255±5 , Duration:5±0.5sec. |
| 3 | | 2 | 10 | /sec. | 3. Cooling Speed: 2~10 /sec. |

/ **Resistance to Soldering Heat Test Conditions**

270±5 10±1 sec. Temp.:270±5 Time:10±1 sec

/ **Packaging SPEC.**

/ BULK

Package Type	Units					Dimension (unit mm ³)		
	Units/Bag /	Bags/Inner Box /	Units/Inner Box /	Inner Boxes/Outer Box /	Units/Outer Box /	Bag	Inner Box	Outer Box
TO-220/F	200	10	2,000	5	10,000	135×190	237×172×102	560×245×195

/ TUBE

Package Type	Units					Dimension (unit mm ³)		
	Units/Tube /	Tubes/Inner Box /	Units/Inner Box /	Inner Boxes/Outer Box /	Units/Outer Box /	Tube	Inner Box	Outer Box
TO-220/F	50	20	1,000	5	5,000	532×31.4×5.5	555×164×50	