

/ Descriptions

TO-262 N MOS N-CHANNEL MOSFET in a TO-262 Plastic Package.

/ Features

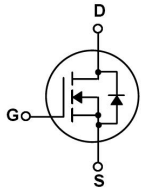
Low gate charge, low crss, fast switching.

/ Applications

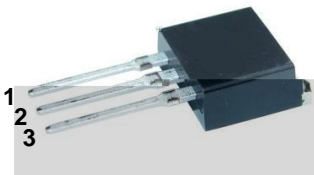
DC/DC

These devices are well suited for high efficiency switching DC/DC converters and switch mode power supplies.

/ Equivalent Circuit



/ Pinning



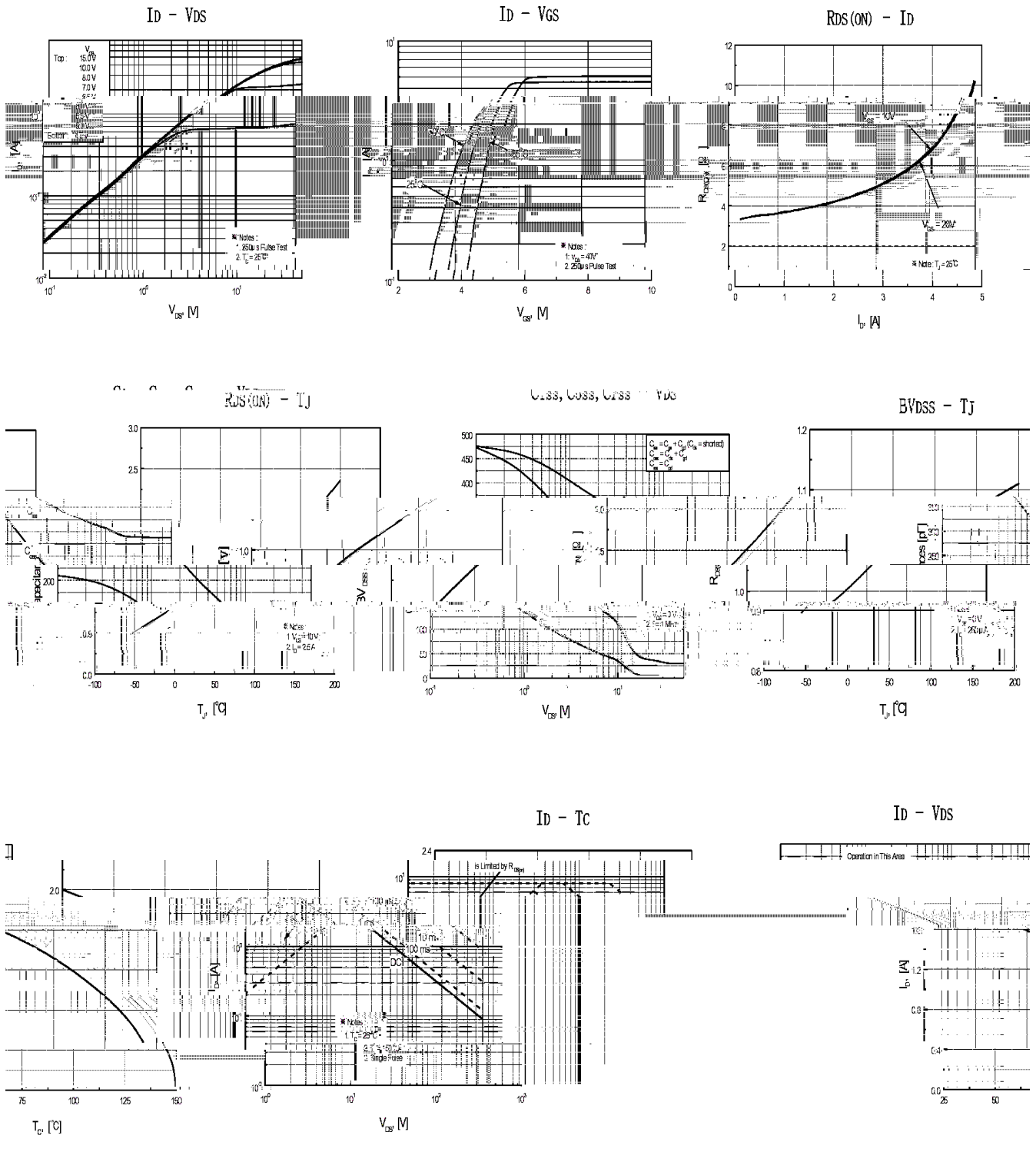
PIN1 G PIN 2 D PIN 3 S

/ h_{FE} Classifications & Marking

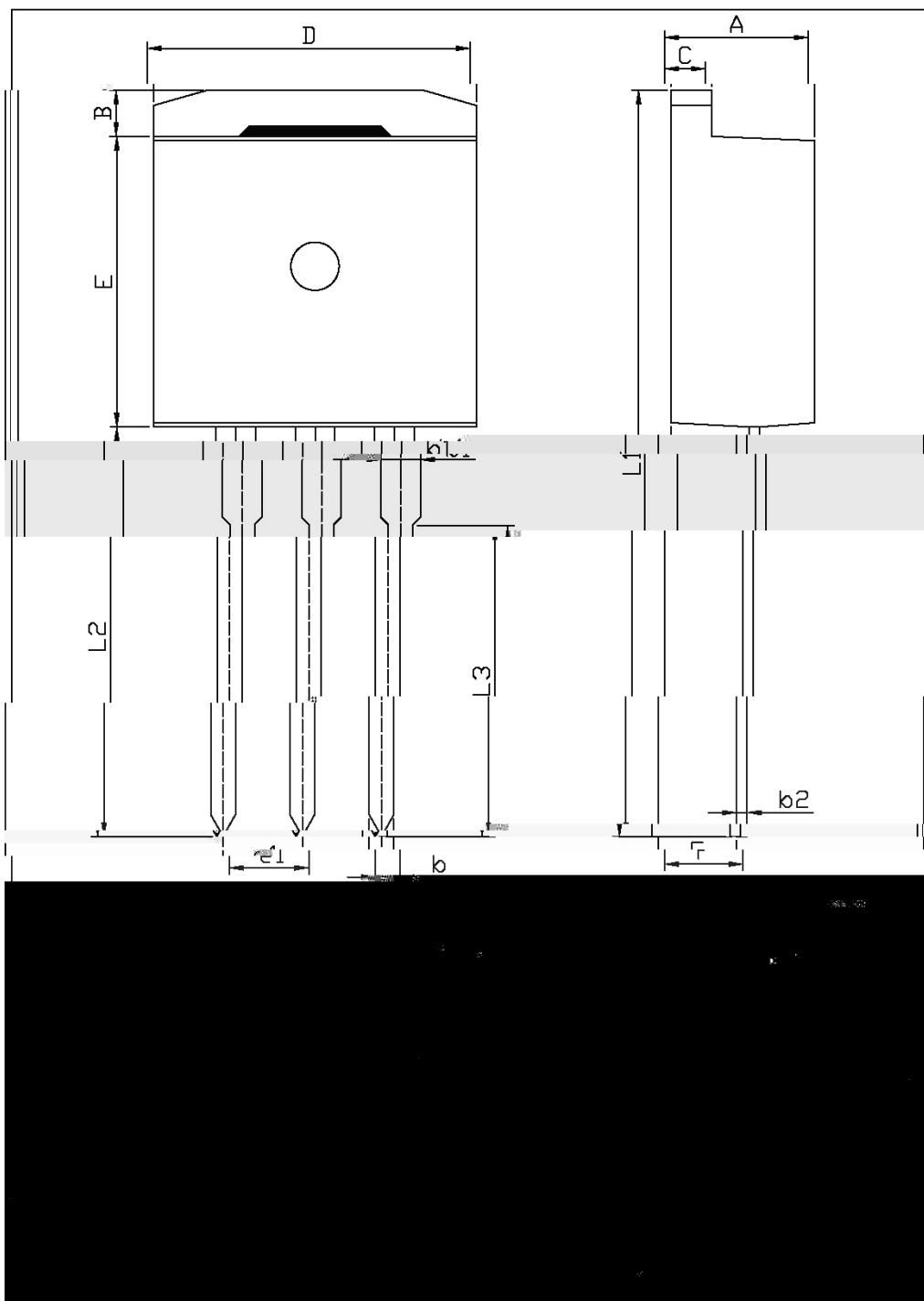
See Marking Instructions.

Parameter	Symbol	Rating	Unit
Drain-Source Voltage	V_{DSS}	600	V
Drain Current	$I_D(T_C=25^\circ\text{C})$	2.0	A
Drain Current	$I_D(T_C=100^\circ\text{C})$	1.3	A
Drain Current - Pulsed	I_{DM}	6.0	A
Gate-Source Voltage	V_{GSS}	± 30	V
Single Pulsed Avalanche Energy	E_{AS}	120	mJ
Repetitive Avalanche Energy	E_{AR}	5.4	mJ
Avalanche Current	I_{AR}	2.0	A
Power Dissipation	$P_D(T_C=25^\circ\text{C})$	54	W
Operating and Storage Temperature Range	T_J, T_{STG}	-55 to 150	
Thermal Resistance Junction-case	R		

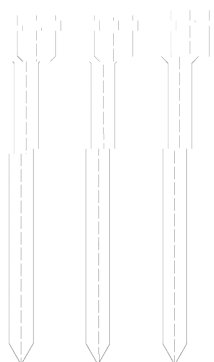
/ Electrical Characteristic Curve



/ Package Dimensions



/ Marking Instructions



BR

2N60

Note:

BR: Company Code

2N60: Product Type.

****: Lot No. Code, code change with Lot No.

