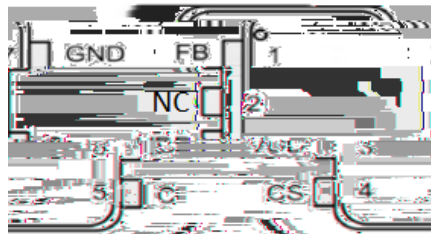
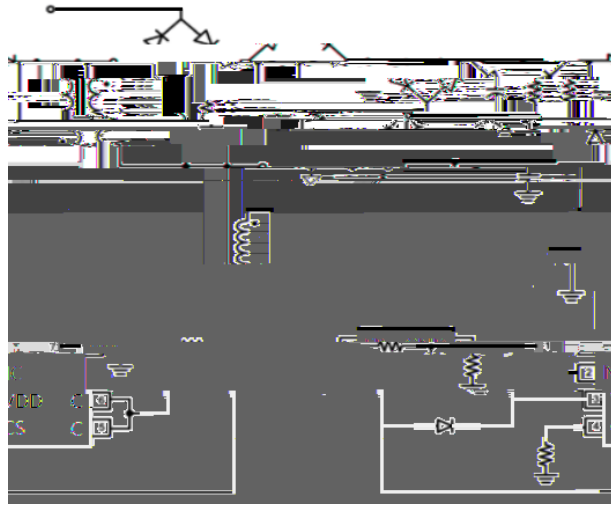
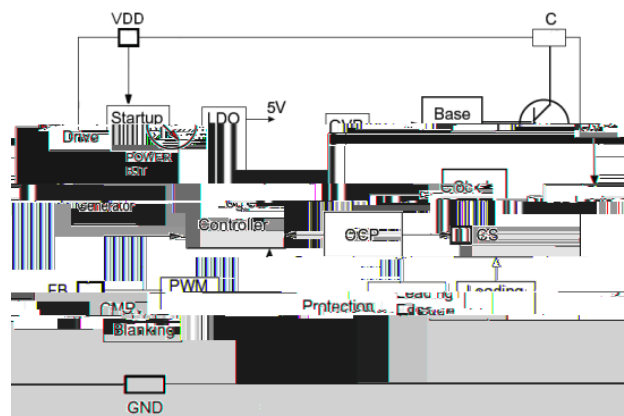


Rev.B May.-2019



1	FB	
2	NC	
3	VDD	
4	CS	
5 6	C	BJT
7	GND	



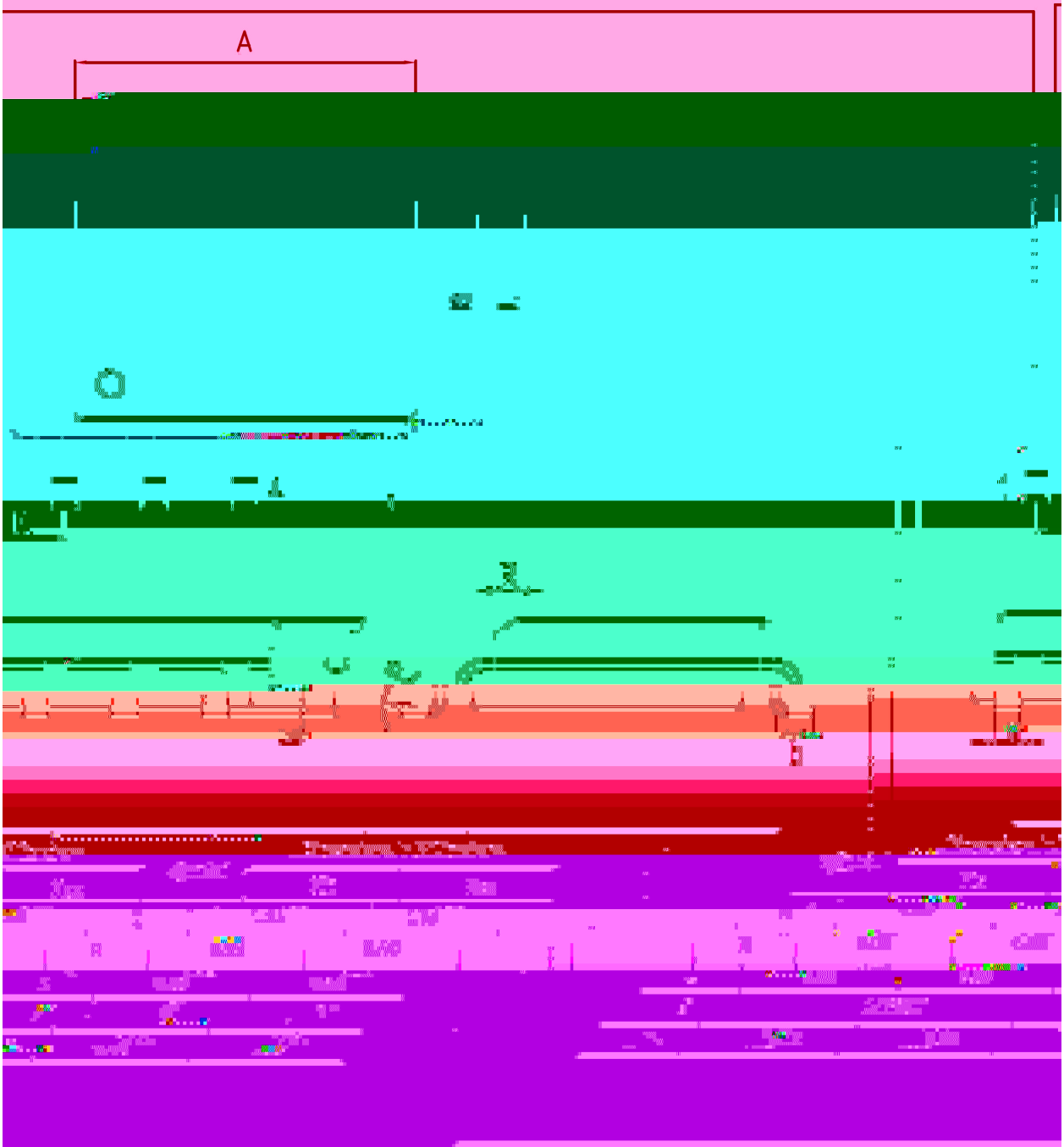
1

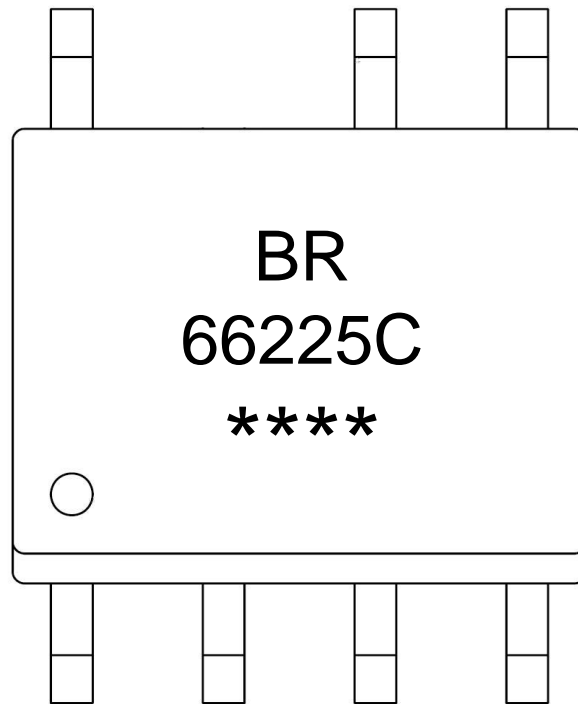
Note 1: If the device operating conditions over the maximum rating of the above-mentioned conditions, may cause permanent damage to the device. The above parameters is only part of the operating

Parameter	Symbol	Test Conditions	Min	Typ	Max	Unit
Maximum Cable Drop Compensation (CDC) Current	$I_{\text{Cable_max}}$			45		μA
CS Input Leading Edge Blanking Time	T_{LEB}			350		ns
Minimum overcurrent protection threshold	$V_{\text{TH_OCPmin}}$			500		mV
Maximum overcurrent protection threshold	$V_{\text{TH_OCPmax}}$			550		mV

SOP-7

单位: mm

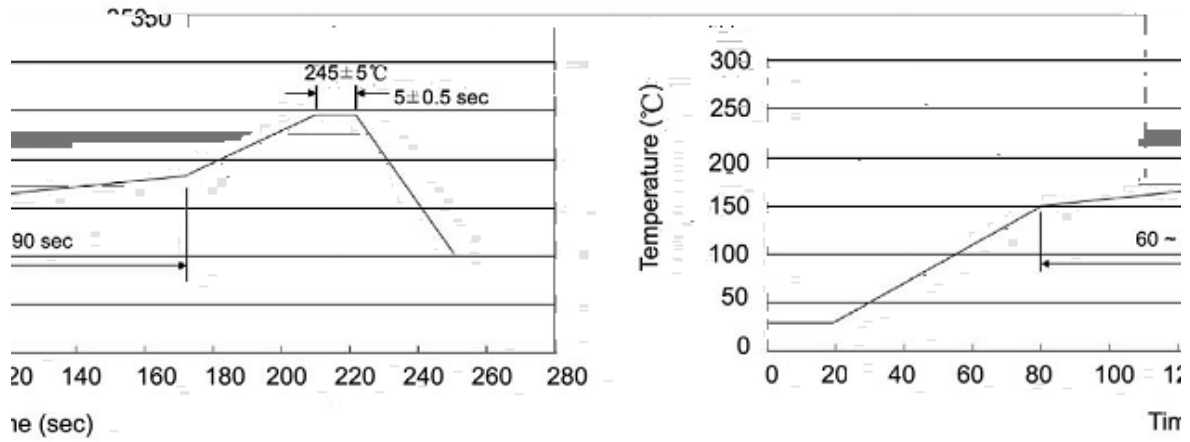




BR
66225C 66225D 66225E
****:

Note

BR	Company Code
66225C	Product Type, or 66225D , or 66225E
****:	Lot No.Code,code change with Lot No.


Note:

- 1 150 180 60 90sec;
- 2 245±5 5±0.5sec;
- 3 2 10 /sec.

- 1.Preheating:150~180 , Time:60~90sec.
- 2.Peak Temp.:245±5 , Duration:5±0.5sec.
3. Cooling Speed: 2~10 /sec.

 260 ± 5
 10 ± 1 sec.

 Temp.: 260 ± 5

 Time: 10 ± 1 sec

/ REEL

Package Type