

# BRC07550RTAQ

Rev.B Jun.-2022

## / Descriptions

SOT-89

Low dropout linear regulator in a SOT-89 Plastic Package.

## / Features

30V

2.5 A

..2fl

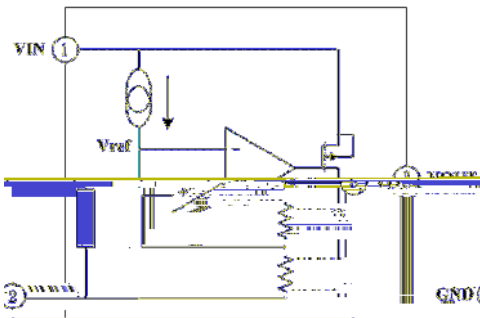
AEC-Q100

Low power consumption,Low voltage drop,Small temperature drift coefficient,High input voltage up to 30V,The static current 2.5 A,The output voltage accuracy:..2%,Qualified to AEC-Q100 Standards for High Reliability, HF Product.

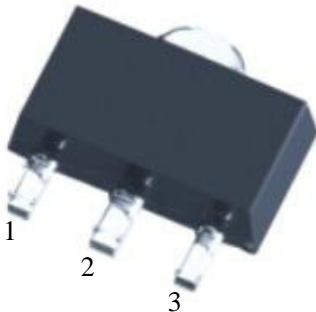
## / Applications

For use in power equipment,Communication equipment,Audio and video equipment, Meet the stringent requirements of automotive applications.

## / Equivalent Circuit



## / Pinning



PIN1 VIN      PIN 2 GND      PIN 3 VOUT

## / Marking

See Marking Instructions.

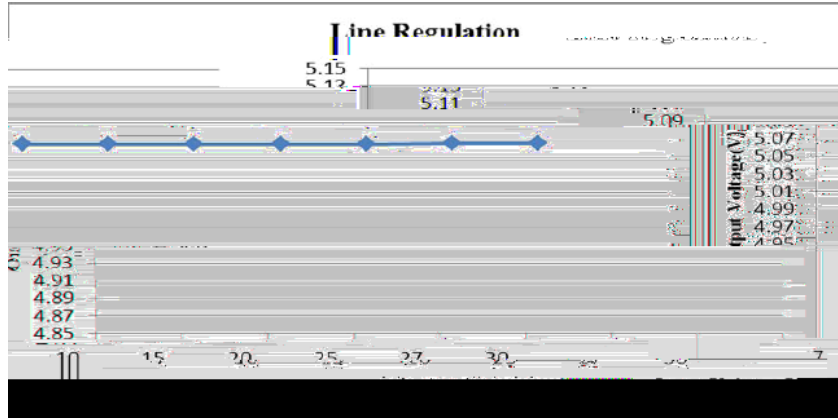
Parameter	Symbol	Rating	Unit
Working Voltage	$V_{IN}$	-0.3~33	V
Thermal Resistance	$R_{JA}$	200	/W
Power Consumption	$P_W$	500	mW
Storage Temperature	$T_{STG}$	-50~+125	
Working Temperature	$T_A$	-40~+85	

Notes: If the device operating conditions over the maximum rating of the above-mentioned conditions, may cause permanent damage to the device. The above parameters is only part of the operating conditions the maximum, we do not recommend the device running outside the scope of this specification. If the device to work long hours under the condition of absolute maximum limit, its stability may be affected.

Parameter	Symbol	Test Conditions	Min	Typ	Max	Unit
The Output Voltage	$V_{OUT}$	$V_{IN}=7.0V, I_{OUT}=10mA$	4.90	5.00	5.10	V
The Output Current	$I_{OUT}$	$V_{IN}=7.0V$	200			mA
Load Regulation	$V_{OUT}$	$V_{IN}=7.0V$ $1mA \ I_{OUT} \ 150mA$		25	60	mV
Low Dropout	$V_{DIF}$					

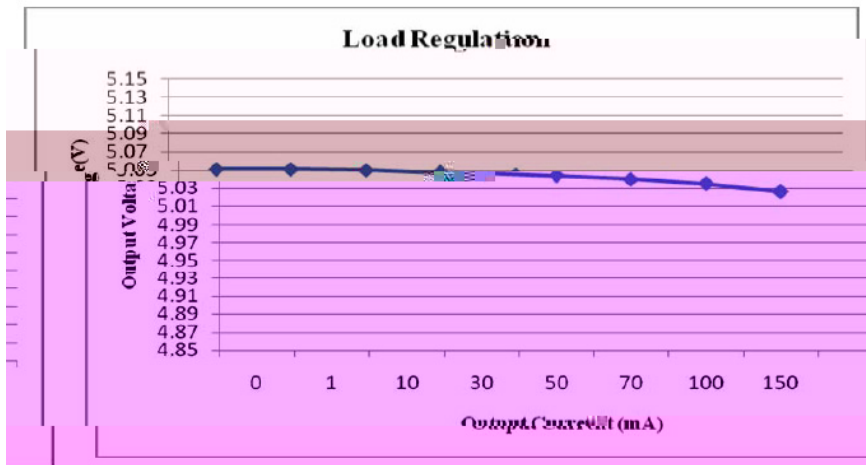
**/ Electrical Characteristic Curve**

/ The input voltage and output voltage



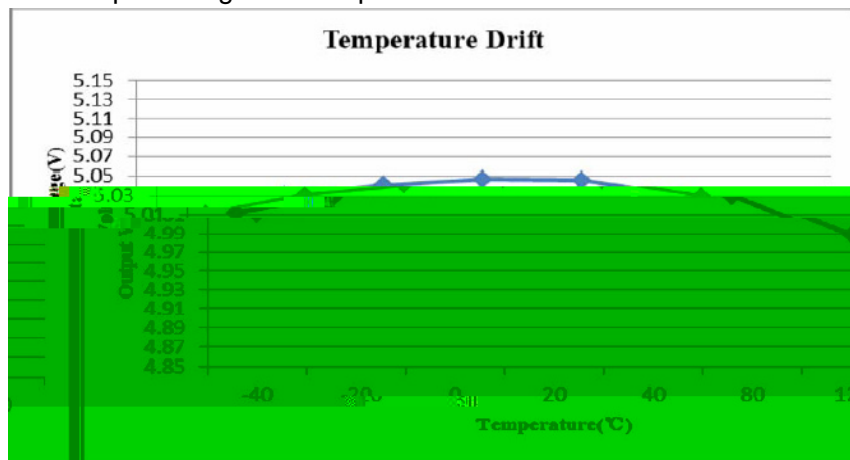
$I_{OUT}=10mA$

/ The output voltage and load current



$V_{IN}=7.0V$

/ The output voltage and temperature

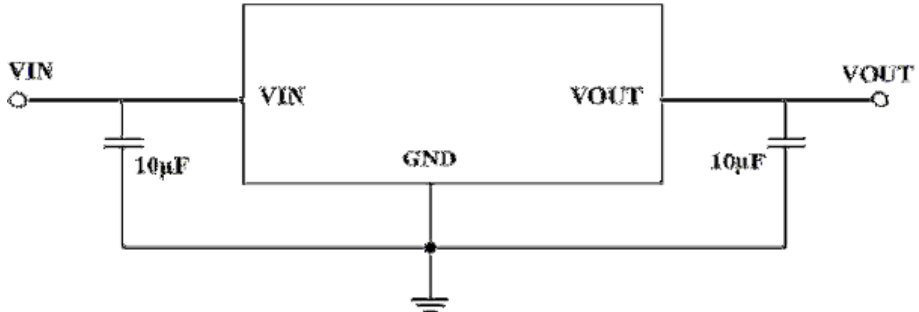


$V_{IN}=7.0V$

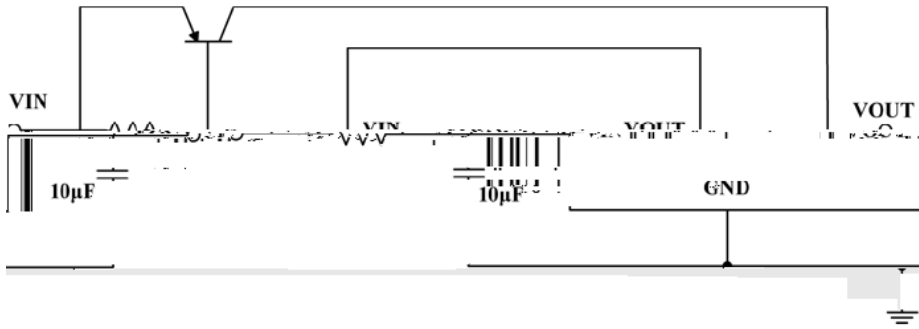
$I_{OUT}=10mA$

**/ Typical Application Circuit**

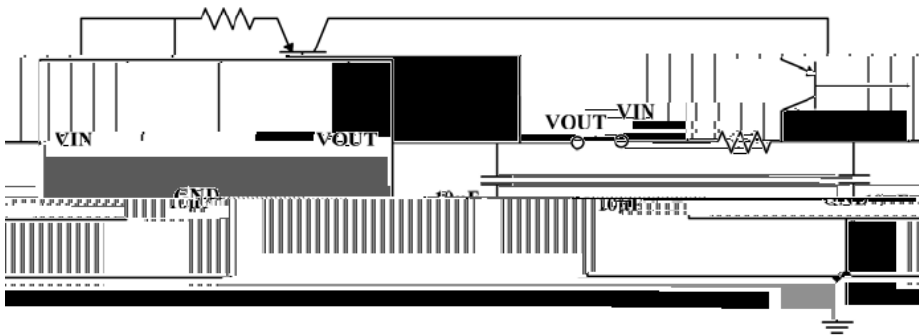
/ Basic Application



/ High Output Current Voltage Regulator



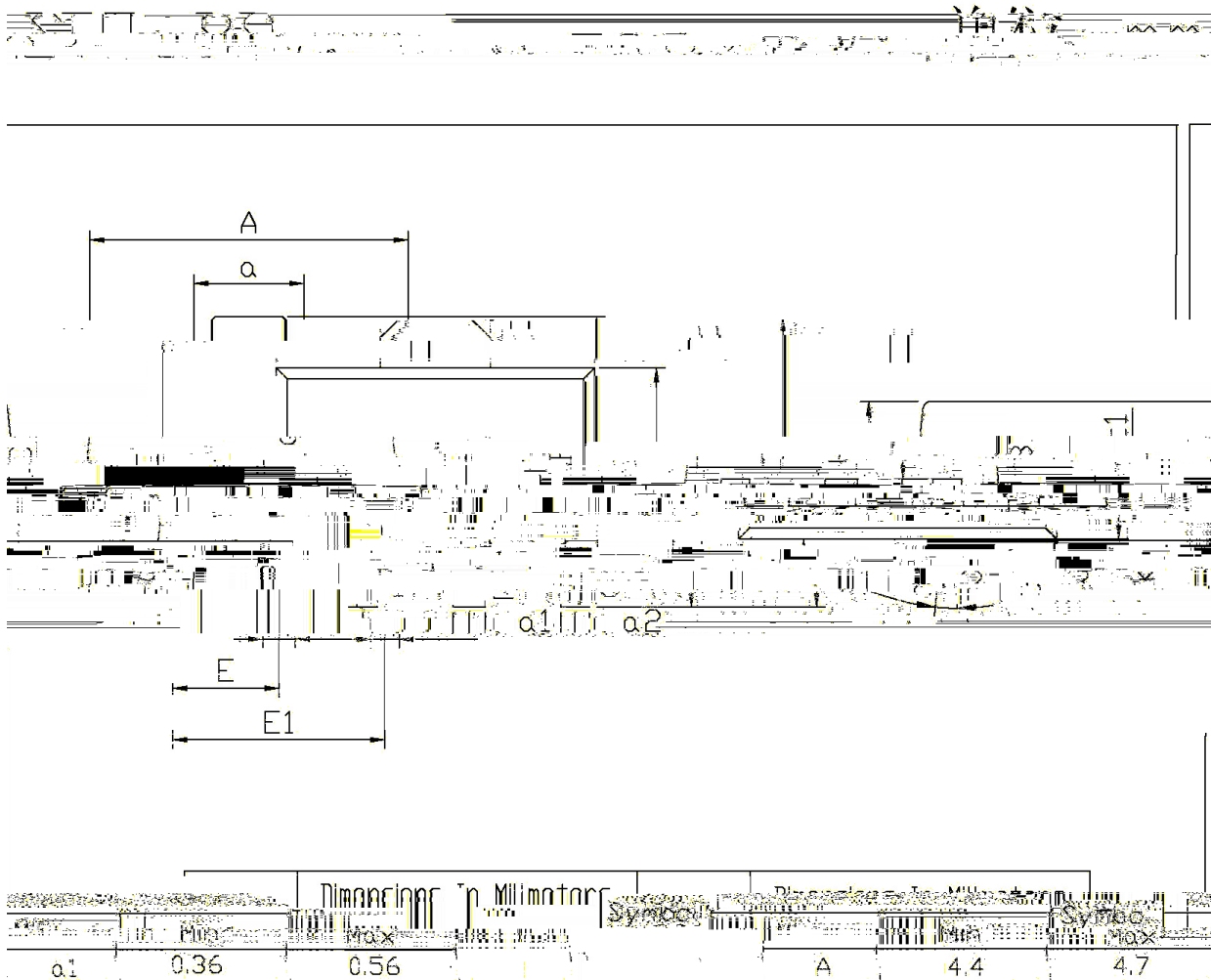
/ Short-Circuit Protection







## / Package Dimensions



# **BRCO7550RTAQ**

Rev.B Jun.-2022

**DATA SHEET**

**BRCO7550RTAQ**  
Rev.B Jun.-2022