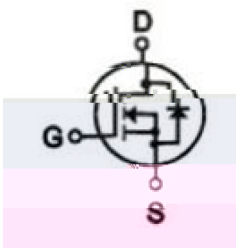


**/ Descriptions**

**/ Features**

**/ Applications**

**/ Equivalent Circuit**



**/ Pinning**



**/ Marking**

		±	

m                      m                      m

					±	

**/ Electrical Characteristics(Ta=25 )**

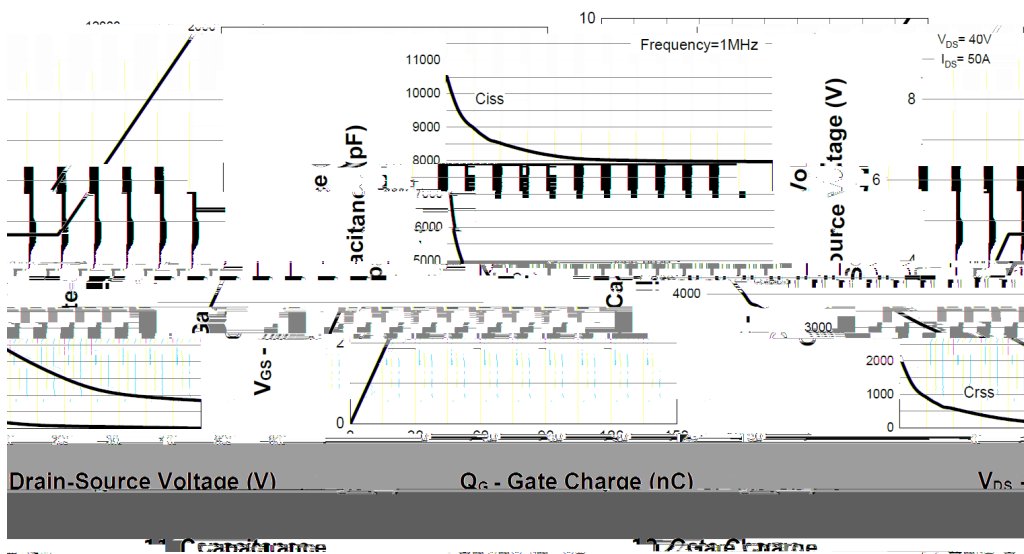
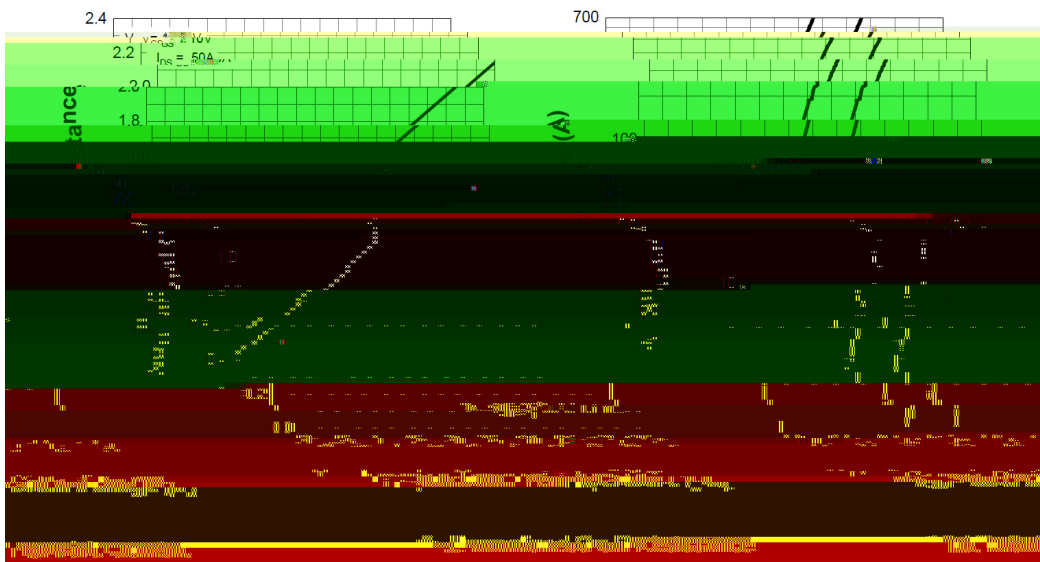
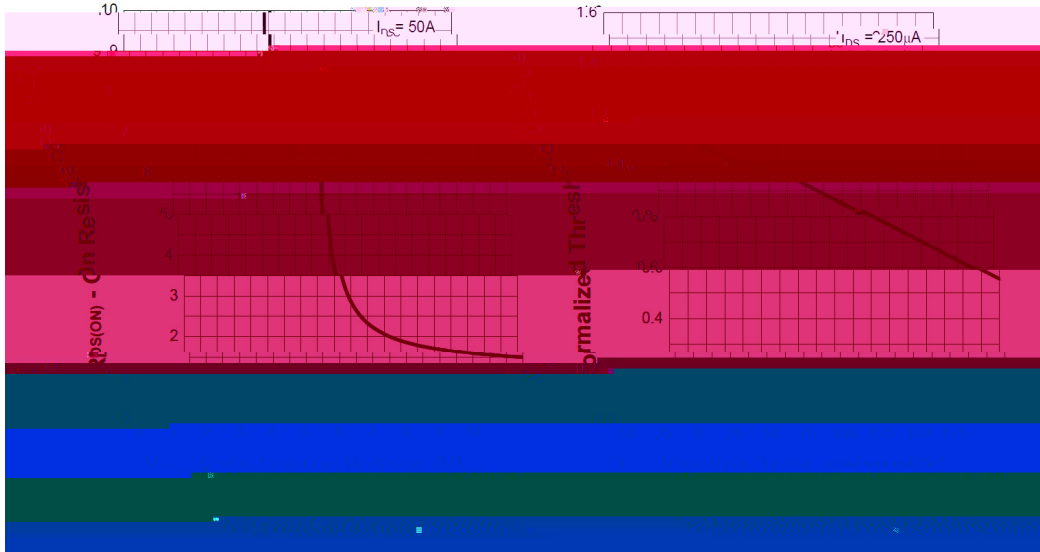

**BRCS015N08SHSL**



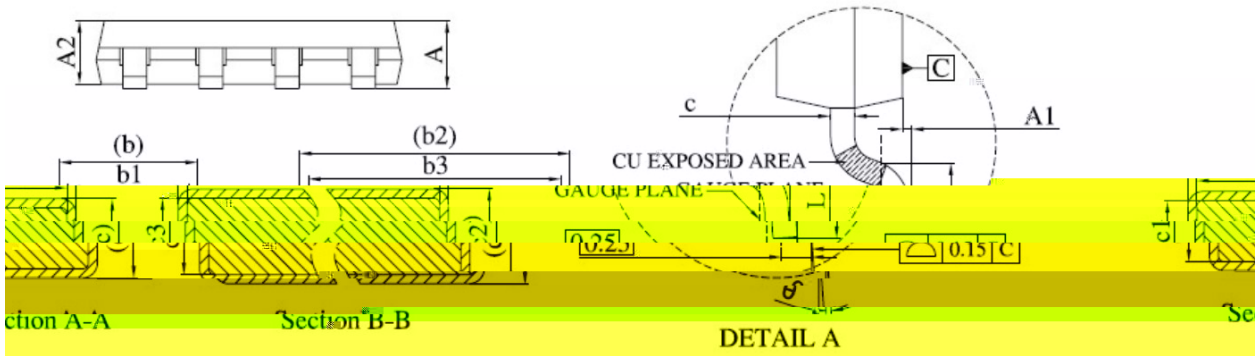
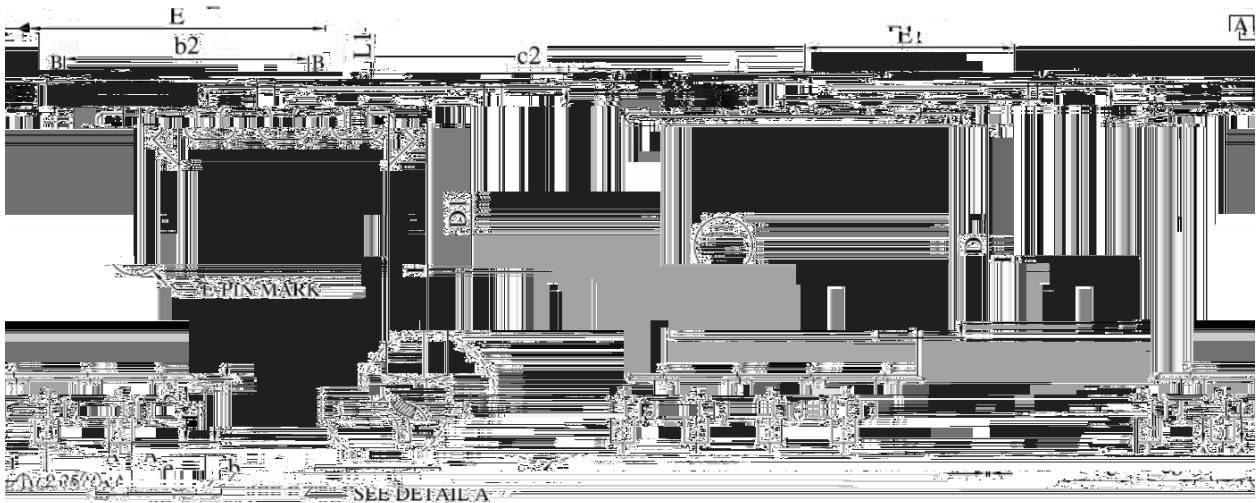
**DATA SHEET**



/ Electrical Characteristic Curve

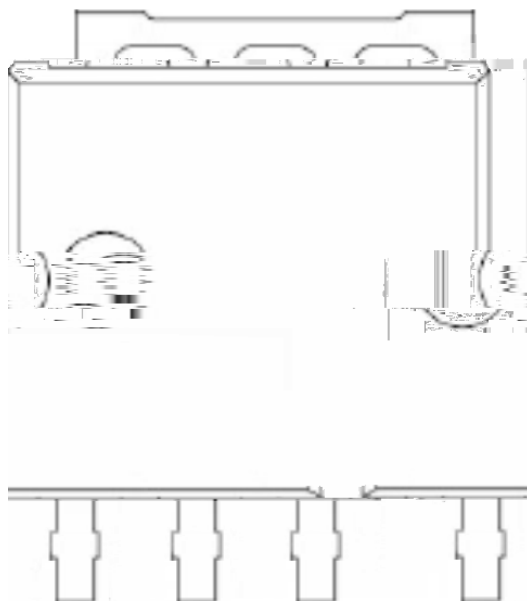


/ Package Dimensions



Dimensions in Millimeters			Dimensions in Millimeters		
Symbol	MIN	MAX	Symbol	MIN	MAX
A <sub>2</sub>	1.00	1.10	F <sub>L1</sub>	4.95	5.30
A <sub>1</sub>	0.00	0.15	F <sub>L2</sub>	3.50	3.70
A <sub>2</sub>	0.98	1.12	e	1.27 BSC.	
b	0.35	0.50	H	5.95	6.25
b <sub>L</sub>	0.33	0.40	∠	-	0.25
b <sub>1</sub>	4.00	4.40	∠	0.00	0.10
b <sub>2</sub>	4.00	4.37	∠	0.27	0.37
c	0.10	0.25	∠	0.00	0.10

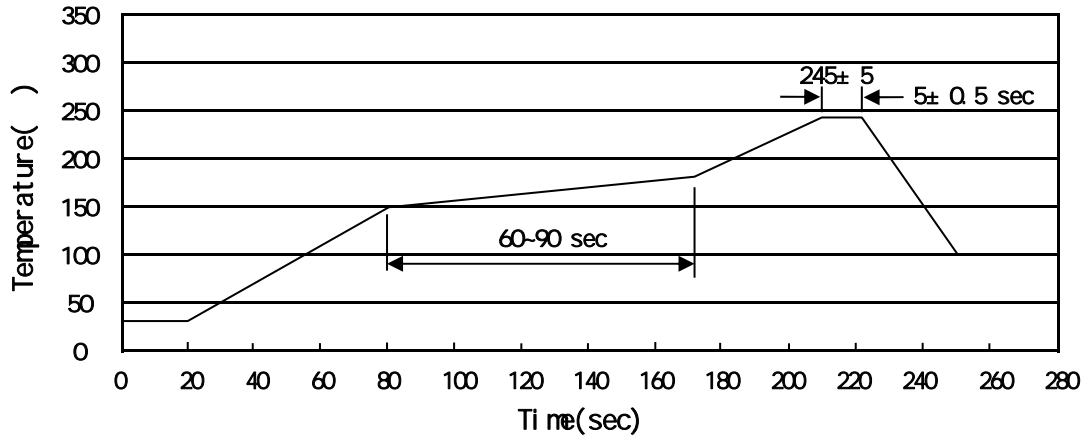
**/ Marking Instructions**



BR

\*\*\*\*

( ) / Temperature Profile for IR Reflow Soldering(Pb-Free)



± ± ± ±

/ Resistance to Soldering Heat Test Conditions

± ±

/ Packaging SPEC.

	Units/Reel	Reels/Inner Box	Units/Inner Box	Inner Boxes/Outer Box	Units/Outer Box	Reel	Inner Box	Outer Box
	/	/	/	/	/			

	Units/Reel	Reels/Inner Box	Units/Inner Box	Inner Boxes/Outer Box	Units/Outer Box	Reel	Inner Box	Outer Box
	/	/	/	/	/			

/ Notices