

# BRCs030N04DPQ

Rev.A Oct.-2023

## / Descriptions

TO-252 N

N-CHANNEL MOSFET in a TO-252 Plastic Package.

## / Features

$R_{DS(on)}$   $C_{rss}$  AEC-Q101

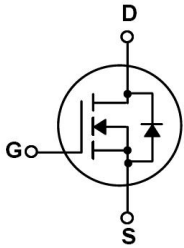
Low  $R_{DS(on)}$ , low gate charge, low  $C_{rss}$ , fast switching, Qualified to AEC-Q101 Standards for High Reliability, HF Product.

## / Applications

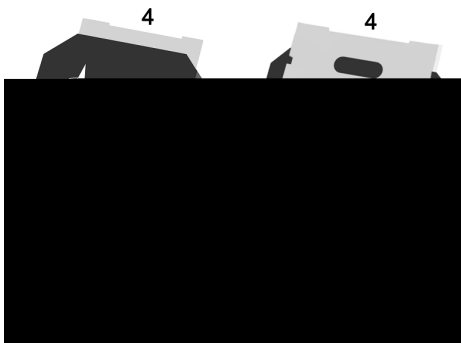
DC/DC

Suited for low voltage applications such as automotive, DC/DC Converters, and high efficiency switching for power management in portable and battery operated products, Meet the stringent requirements of automotive applications.

## / Equivalent Circuit



## / Pinning



PIN 1 G

PIN 2 D

PIN 3 S

PIN 4 D

## / Marking

See Marking Instructions.



# BRCs030N04DPQ

Rev.A Oct.-2023

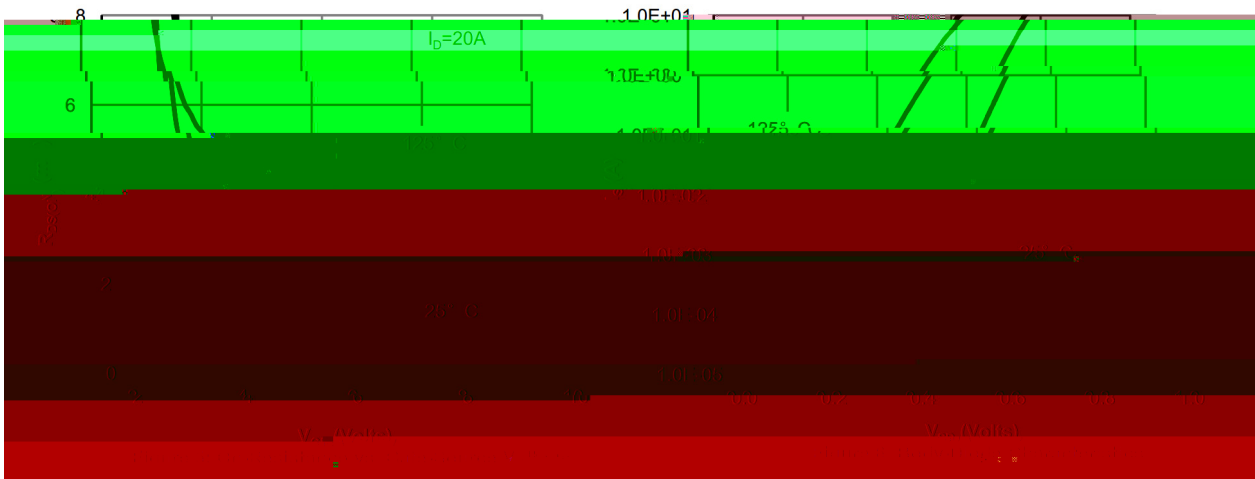
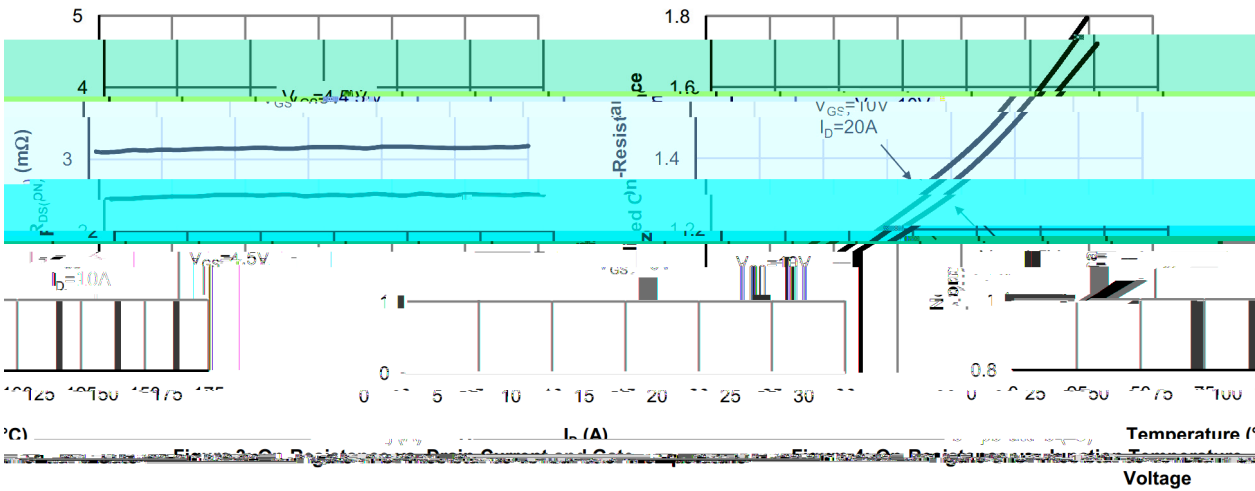
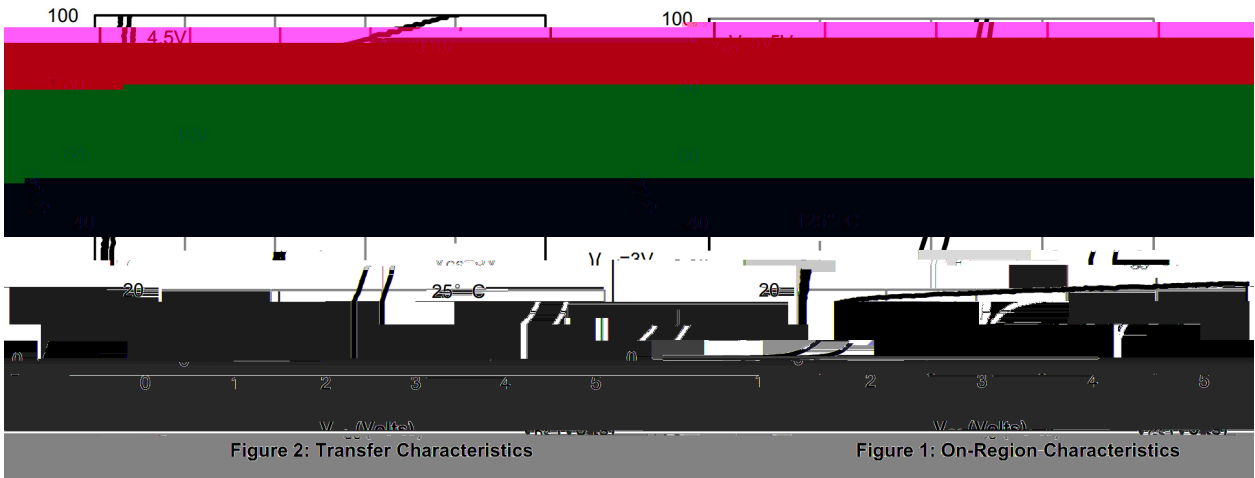


蓝箭电子  
BLUE ROCKET ELECTRONICS

DATA SHEET

Parameter	Symbol	Test Conditions	Min	Typ	Max	Unit
Tu.0037 TwD4 3ditions						

/ Electrical Characteristic Curve



/ Electrical Characteristic Curve

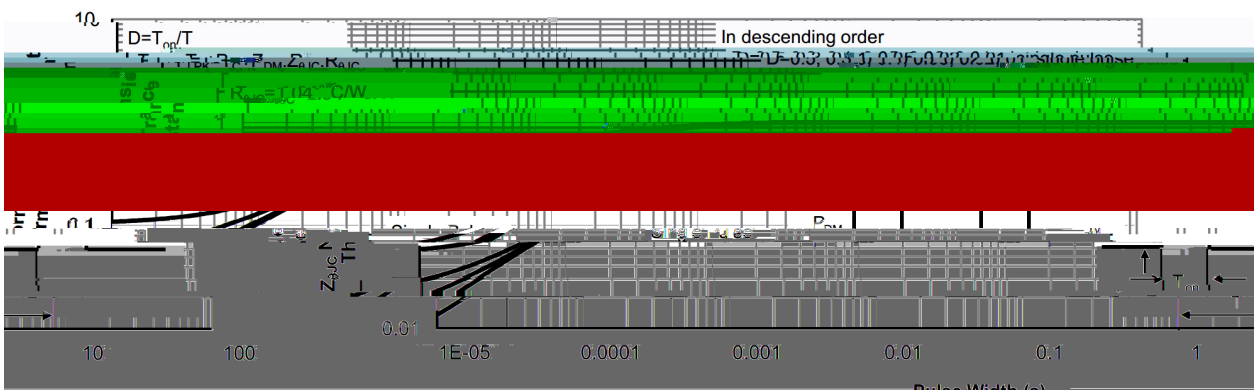
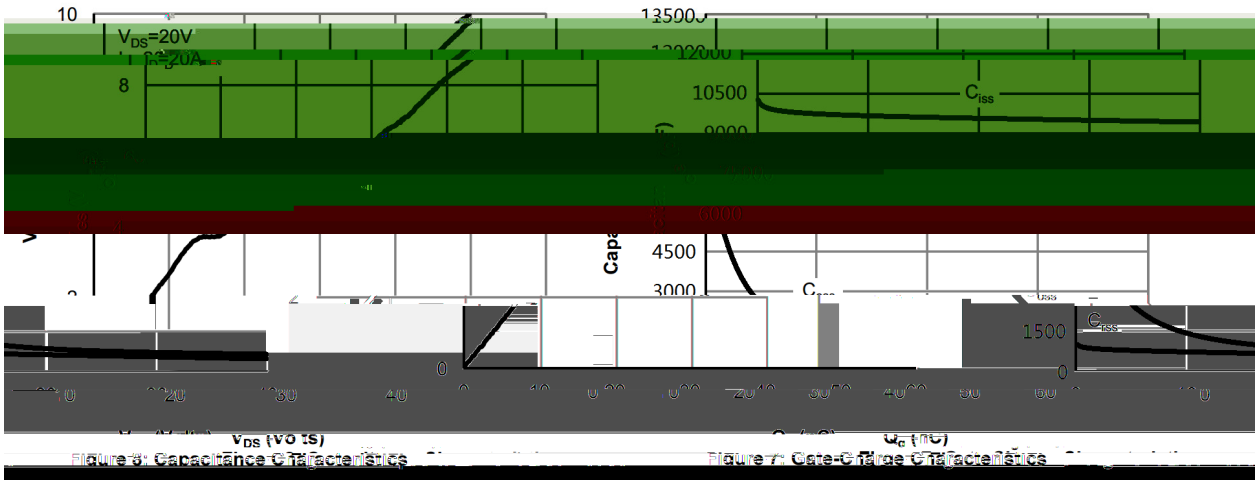
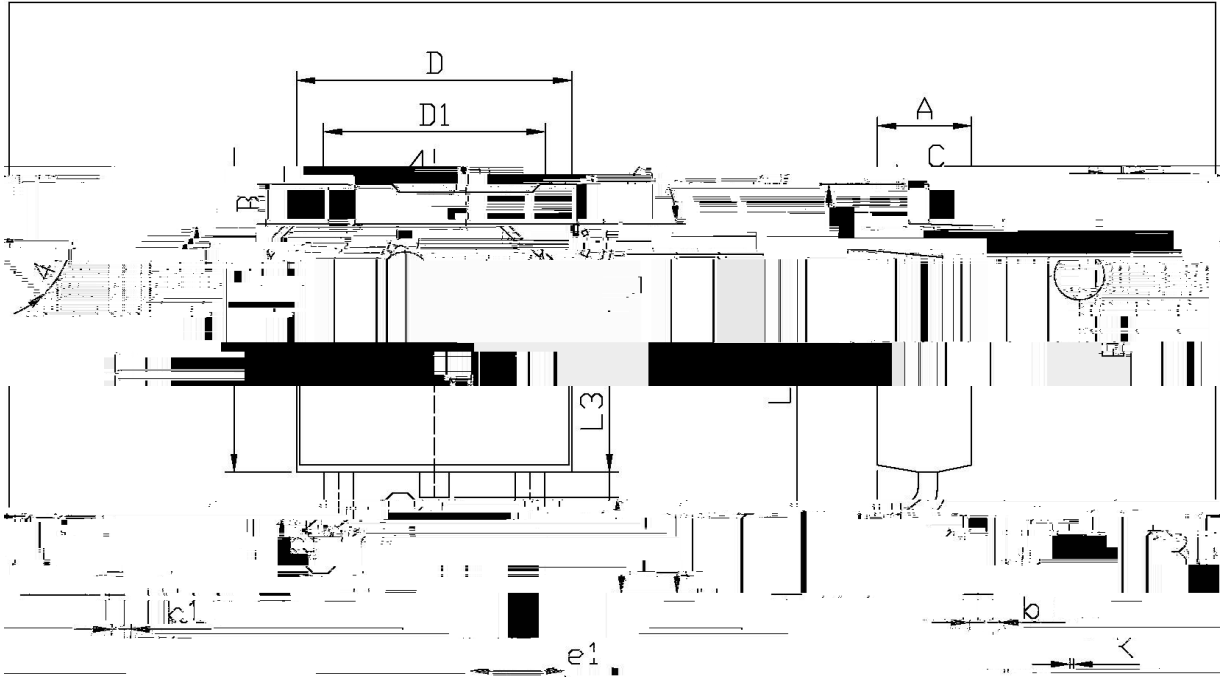


Figure 10: Maximum Junction Temperature

**/ Package Dimensions**

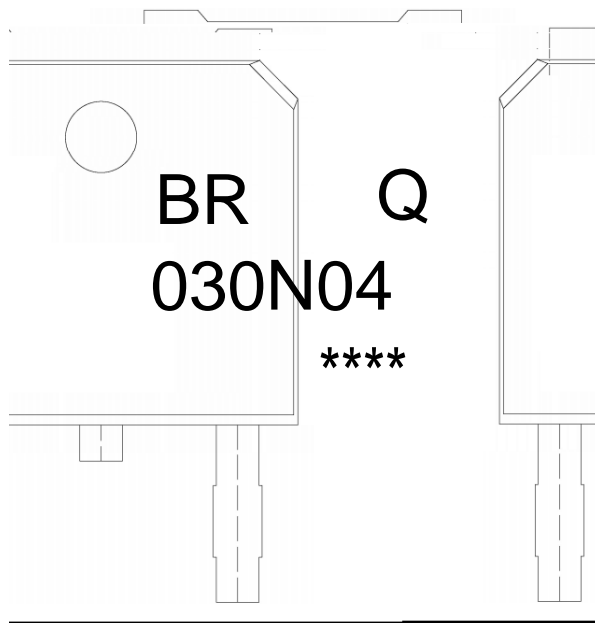


单位: mm

Dimensions		Millimeters		Dimensions		In Millimeters	
Min.	Max.	Symbol	Min.	Max.	Symbol	Min.	Max.
0.08	0.10	B	0.95	1.25	e1	2.24	2.34
0.45	0.55	L3	0.70	0.90	k1	0.95	1.05
0.15	0.55	L	0.75	1.00	b	0.60	0.70
0.10	0.10	D1	5.10	5.50	$\phi$	0.60	0.60

TO-252

**/ Marking Instructions**



BR

Q

030N04

\*\*\*\*

Note:

BR: Company Code

Q: Automobile halogen-free product Code

030N04: Product Type Code

\*\*\*\*: Lot No. Code, code change with Lot No

**( ) / Temperature Profile for IR Reflow Soldering(Pb-Free)**


**Note:**

- 1            150 200            60 120sec;    1.Preheating:150~200 , Time:60~120sec.
- 2            255±5                    5±0.5sec;    2.Peak Temp.:255±5 , Duration:5±0.5sec.
- 3                            2 10 /sec.            3. Cooling Speed: 2~10 /sec.

**/ Resistance to Soldering Heat Test Conditions**

260±5	10±1 sec.	Temp.:260±5	Time:10±1 sec
-------	-----------	-------------	---------------

**/ Packaging SPEC.**

/ REEL