

BRCS045N03YM

Rev.A May.-2024

/ Descriptions

PDFN5 6A N

Dual N-CHANNEL MOSFET in a PDFN5x6A Plastic Package .

/ Features

$V_{DS}(V)=30V$ $I_D=64A$

$R_{DS(ON)}@10V<4.5m$ (Typ. 4.3 m)

$R_{DS(ON)}@4.5V<6.5m$ (Typ. 5.9 m)

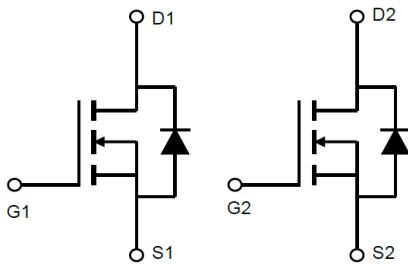
HF Product.

/ Applications

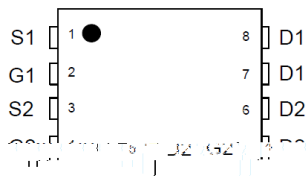
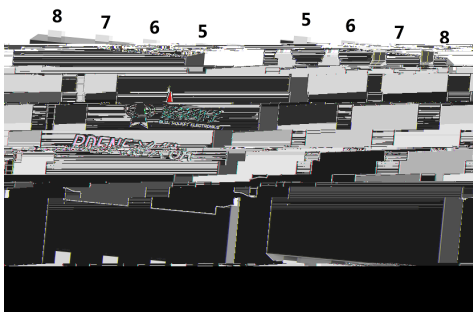
PWM LED

PWM Application, Load Switch, Power Management, Dimming LED.

/ Equivalent Circuit



/ Pinning



/ Marking

See Marking Instructions.

Parameter	Symbol	Rating	Unit
-----------	--------	--------	------

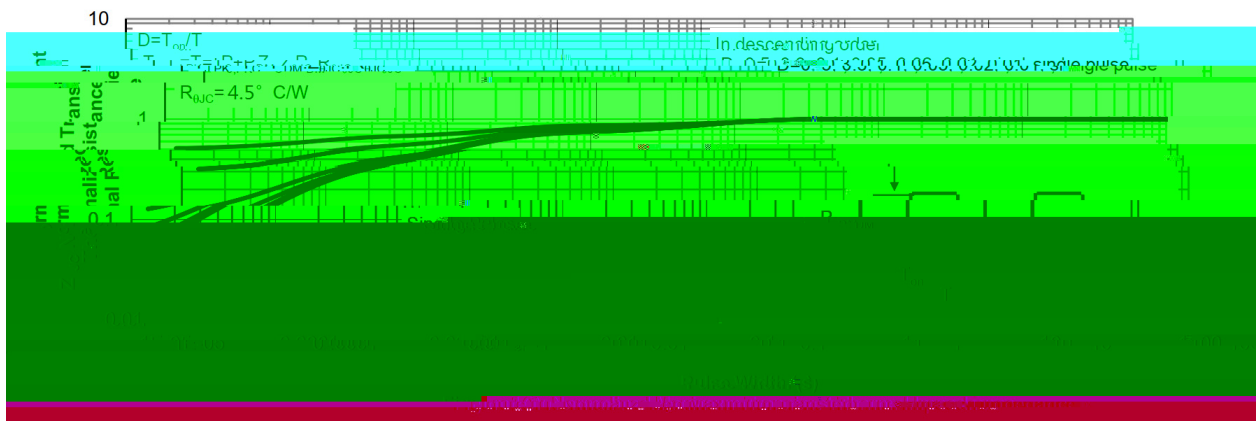
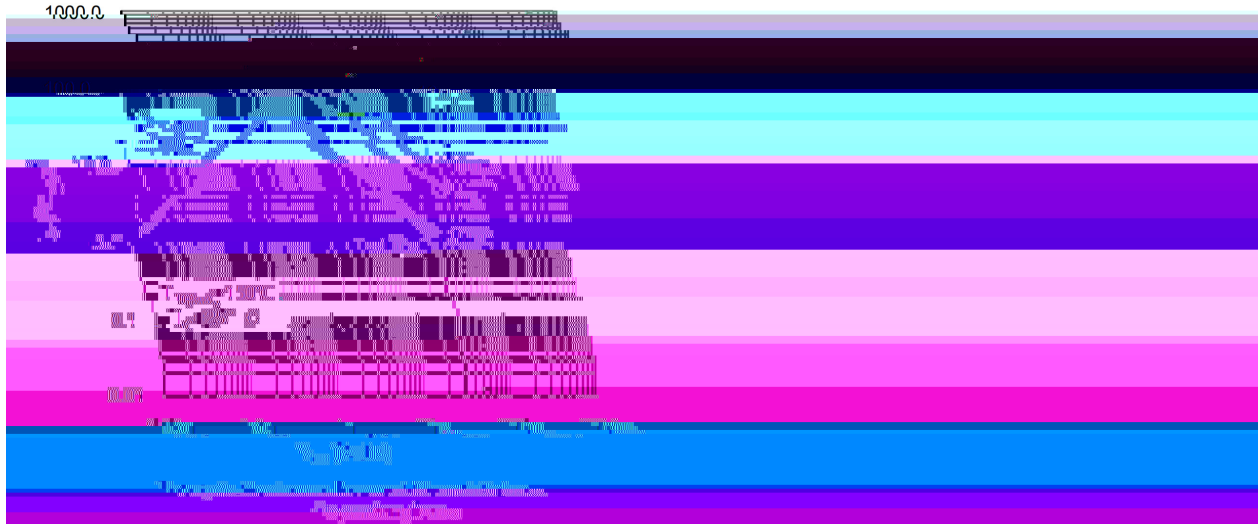
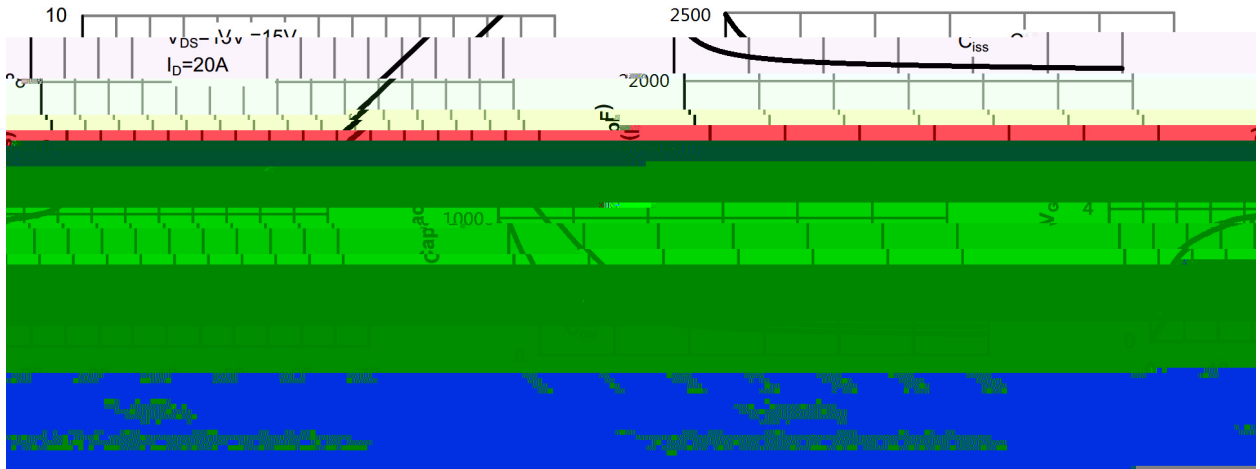
/ Electrical Characteristics(Ta=25)

Parameter	Symbol	Test Conditions	Min	Typ	Max	Unit
Turn-On Delay Time	$t_{d(on)}$	$V_{DS}=15\text{ V}$ $V_{GS}=10\text{V}$ $R_L=0.75$ $R_{GEN}=3$		13.1		ns
Turn-On Rise Time	t_r			15.4		ns
Turn-Off Delay Time	$t_{d(off)}$			42		ns
Turn-Off Fall Time	t_f			15		ns

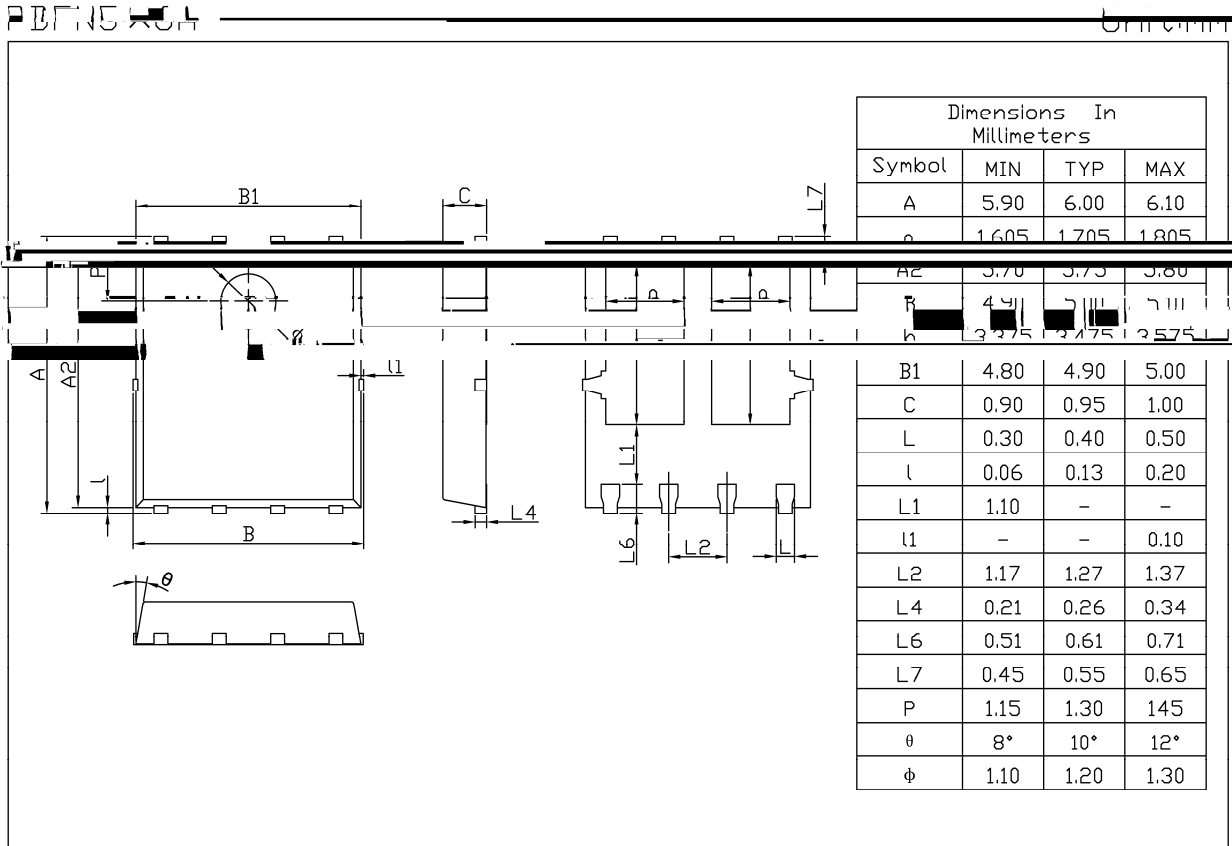
BRCS045N03YM

308.6.7T 0Rd(A7TH1.9(2e)21250)2184.32eA

/ Electrical Characteristic Curve



/ Package Dimensions



Rev.01 202209

/ Marking Instructions



045N03

Note

BR Company Code

045N03 Product Type Code

****: Lot No. Code, code change with Lot No

