

BRCS080N10SBD
Rev.A Jun.-2024

TO-263 8s

<i>@ f</i> Parameter	<i>... Z</i> Symbol	<i>f ›</i> Rating	<i>% y</i> Unit
Drain-Source Voltage	V _{DSS}	100	V

@ f Parameter	... Z Symbol	y i Ú ^ Test Conditions	Â 4 › Min	Á ° › Typ	Â Ý › Max	% y Unit
Turn-On Delay Time	t _{d(on)}	V _{GS} =10V V _{DS} =50V R _L =2.5 R _{GEN} =3		11		ns
Turn-On Rise Time	t _r			4		
Turn-Off Delay Time	t _{d(off)}			32		

Electrical Characteristic Curve

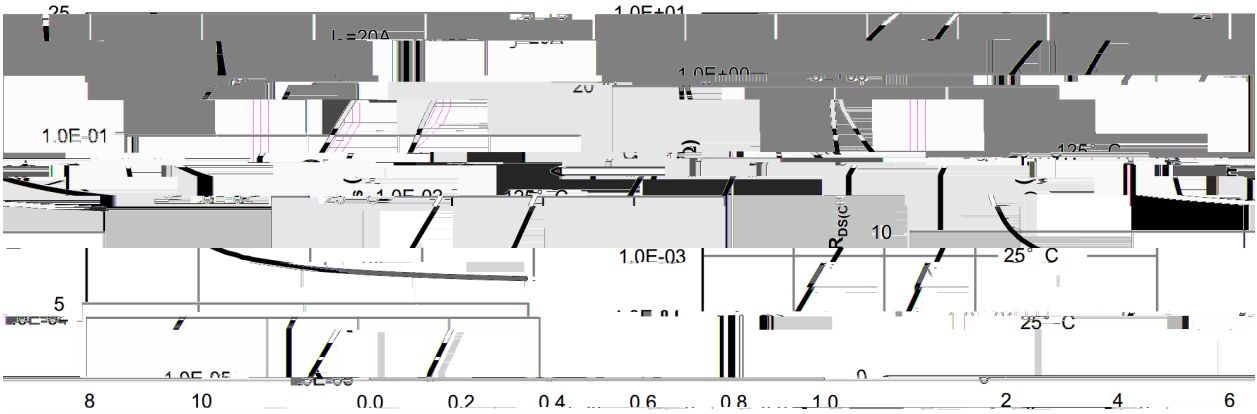
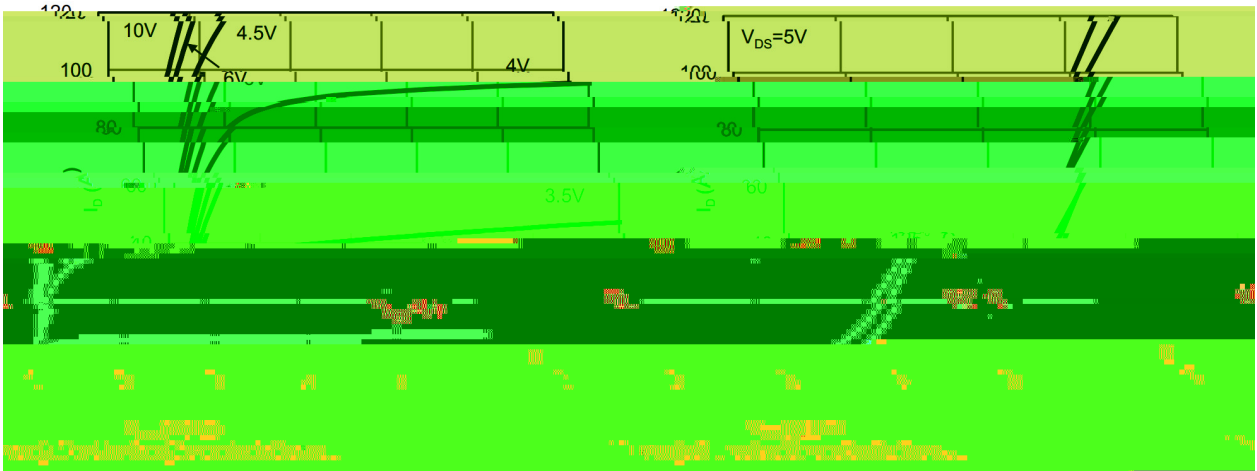
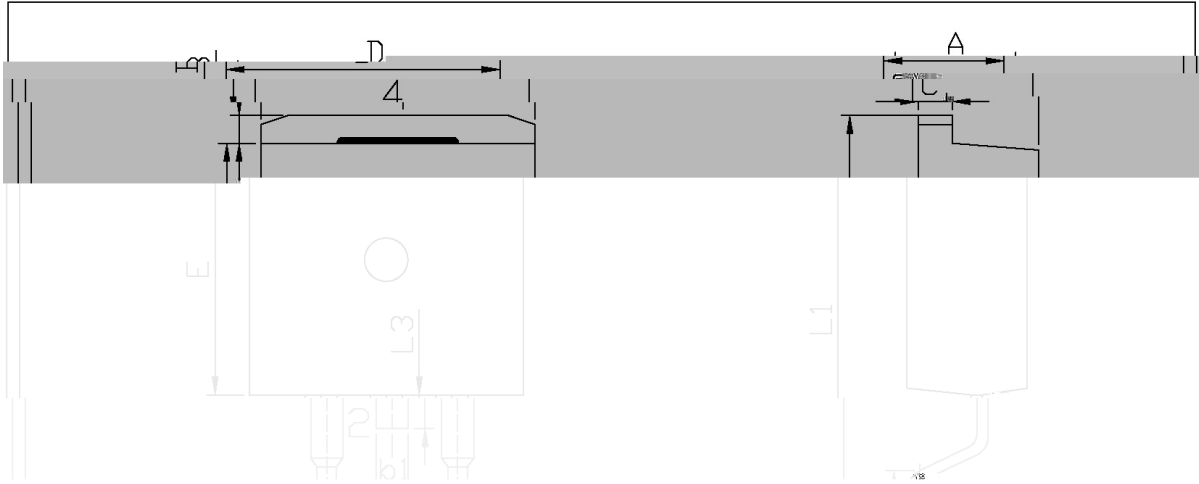


Figure 5: Forward Current vs. Forward Voltage Characteristics
Figure 6: Power Dissipation vs. Forward Current Characteristics

BRCS080N10SBD
Rev.A Jun.-2024

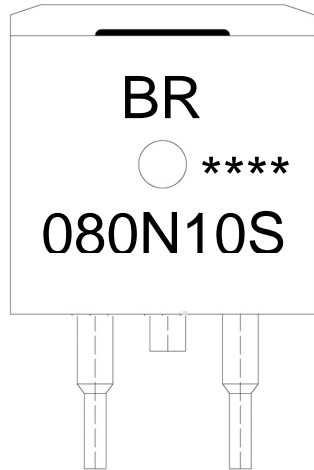
∅ □ =) ∅ / Package Dimensions



Max	Min	Max	Min
9.40	A	4.30	4.70
2.74	B	1.00	1.40
1.00	b1	1.15	1.35
2.84	b2	0.40	0.60
1.60	C	1.20	1.40
	D	9.90	10.20
	L1		1.5
	L2		2.2
	L3		1.2

TN-263

, M y f / Marking Instructions



a ç y
(8 y , [W A
4 9 y ° Z W A
y ÿ D Z W A k š ÿ D Z J

Note:

- BR: Company Code
- 080N10S: Product Type Code
- ****: Lot No. Code, code change with Lot No



šWD t...•Žç (x/) / :KSVKXGZ[XK 6XULORK LUX /8 8KLRU] 9URJKXOTM 6

^açy

1o• Ä ½ “ † 150 ½180 - k ž • 60 ½90sec;

2o• Q › “ † 245 r5 - k ž • 4 Ò 5 r0.5sec;

3o•D N ò i Ò 0 , † 2 ½10 - /sec.

Note:

1.Preheating:150~180 - , Time:60~90sec.

2.Peak Temp.:245 r5 - , Duration:5 r0.5sec.

3. Cooling Speed: 2~10 - /sec.

ÂD /Cã p ~ »] / Resistance to Soldering Heat Test Conditions

605 r5 - (/ -5.7(Park) 5.1266(SBP) 5.0116(Tc) 4.7/1 Bx03.4485 32.3713 TD .0004 Tc -35.6 5309:602
f f lç