

5 é / Descriptions

PDFN5 h 6A Plastic Package.
Dual N-CHANNEL MOSFET in a PDFN5 h 6A Plastic Package.

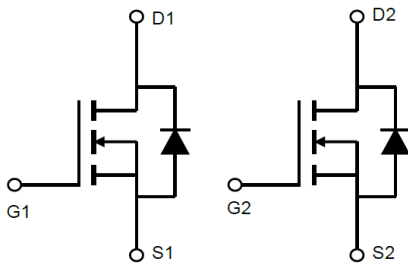
α a / Features

Dual N-Ch
VDS(V)=60V
ID=24.5A
RDS(ON)<13m (VGS=10V)
RDS(ON)<18m (VGS=4.5V)
—)í D }ož HF Product.

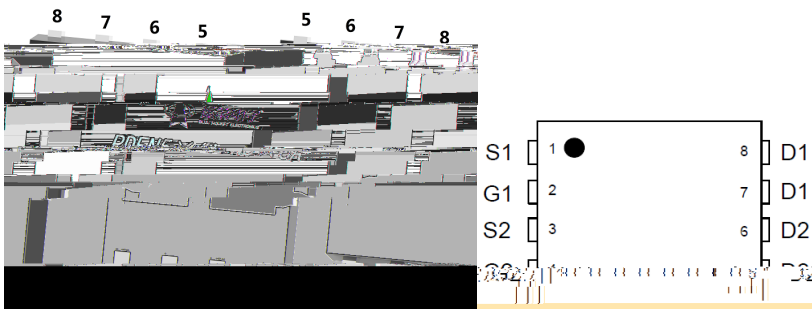
Đ ÷ / Applications

PWM • o• ě ú • ¼o• ›' òo• LED ² °ož
PWM Application, Load Switch, Power Management, Dimming LED.

Ã W] Ô . / Equivalent Circuit



• Ů - æ / Pinning



, M V / Marking

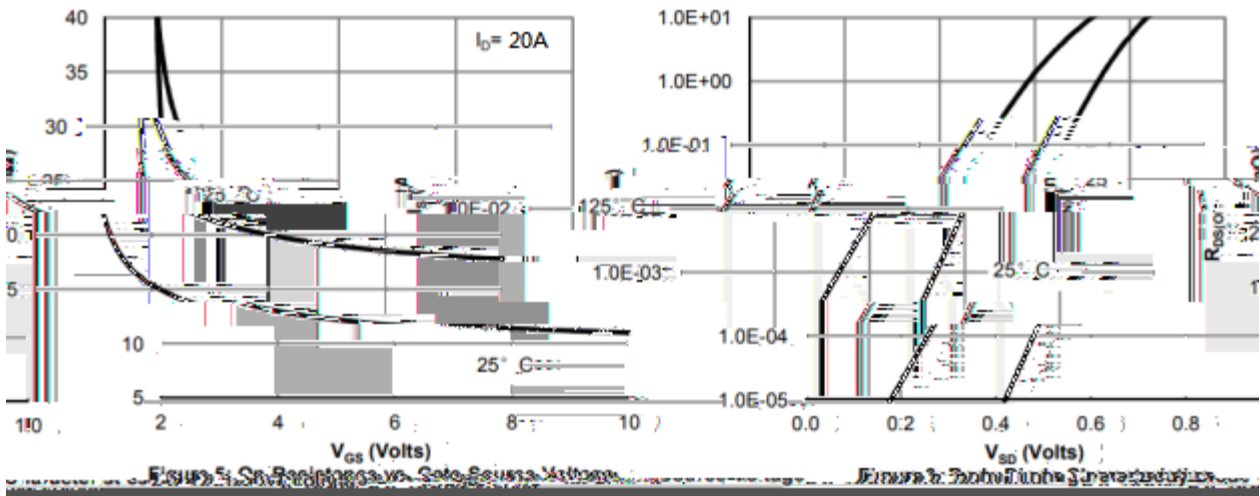
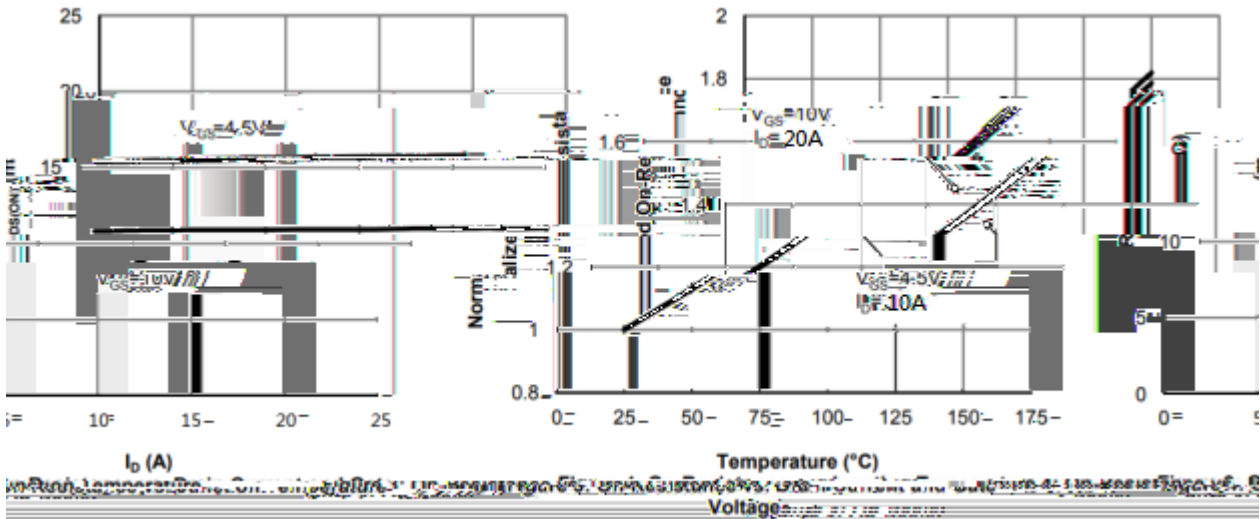
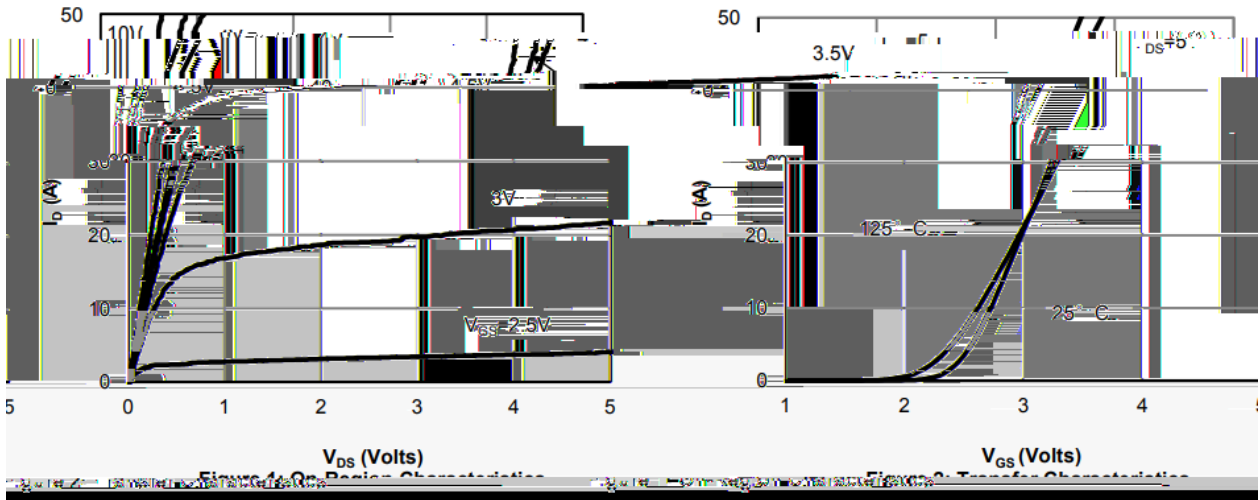
• - ~ a ϕ ÄSee Marking Instructions.

Parameter	Symbol	Rating	Unit
Drain-Source Voltage	V_{DSS}	60	V
Drain Current	$I_D(T_C=25^\circ C)$	24.5	A
Drain Current - Pulsed	I_{DM}	95	A
Gate-Source Voltage	V_{GSS}	± 20	V
Single Pulsed Avalanche Energy	E_{AS}	70	mJ
Avalanche Current	I_{AS}	20	A
Power Dissipation	$P_D(T_C=25^\circ C)$	12.5	W
Operating and Storage Temperature Range	T_J, T_{stg}	-55 to 150	
Junction-to-Ambient Thermal Resistance	R_{JA}	35	$^\circ C/W$

3

@ f Parameter	... Z Symbol	y i Ú ^ Test Conditions	Â 4 › Min	Á ° › Typ	Â Ý › Max	% y Unit
Turn-On Delay Time	t _{d(on)}	V _{GS} =10V V _{DS} =30V R _L =2.3 R _{GEN} =3		5		ns
Turn-On Rise Time	t _r			3		
Turn-Off Delay Time	t _{d(off)}			19		
Turn-Off Fall Time	t _f			3		

Electrical Characteristic Curve



Electrical Characteristic Curve

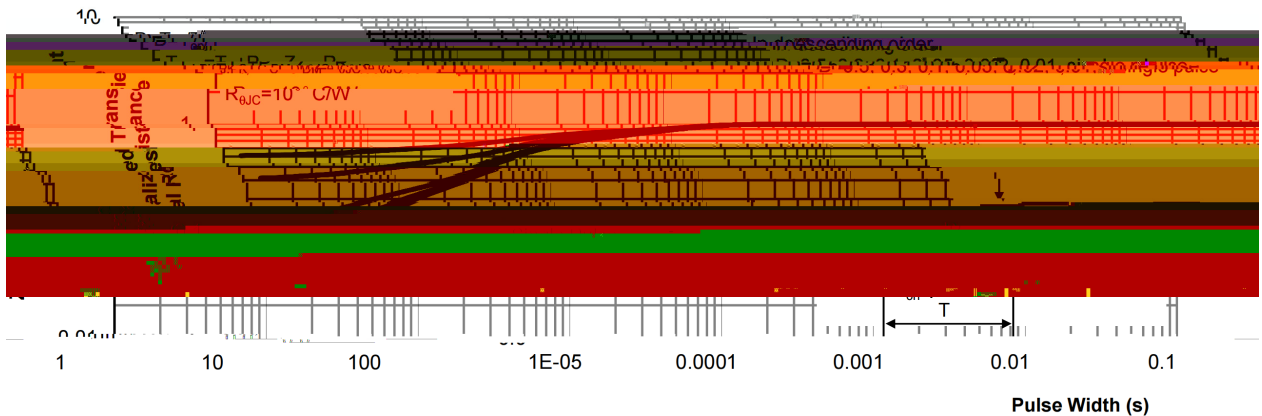
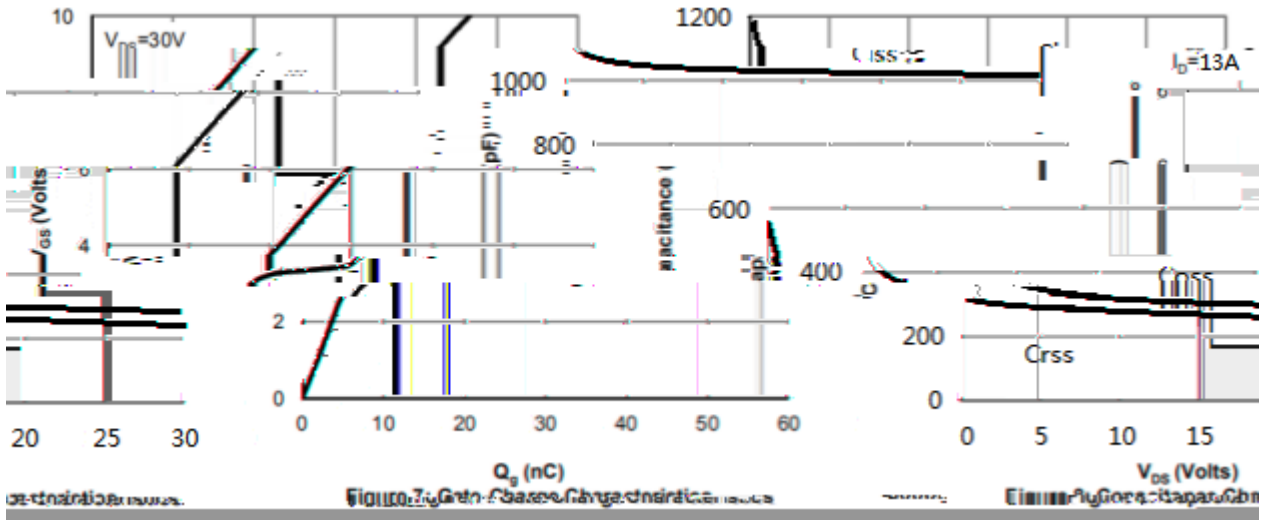
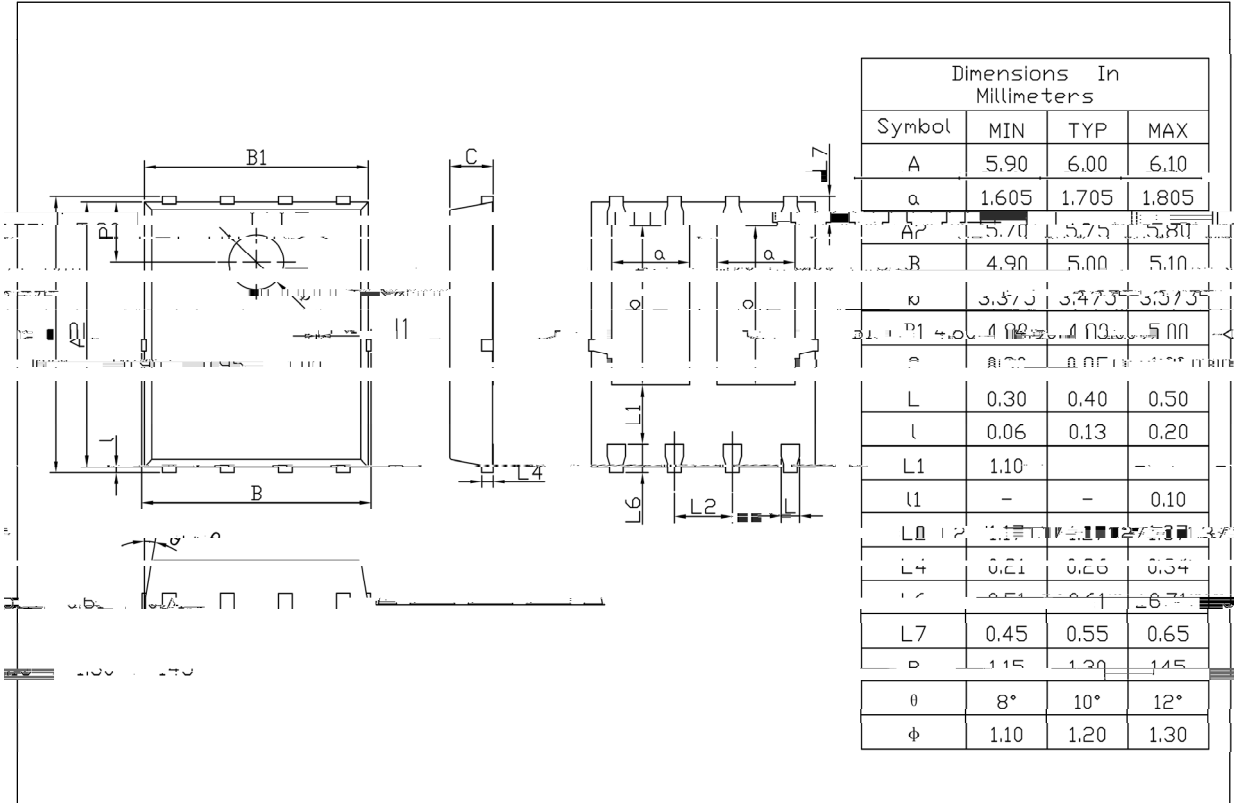


Figure 10: Normalized Maximum Transient Thermal Impedance vs Pulse Width (s)

Ø □ =) φ / Package Dimensions

PDFN5 X6A

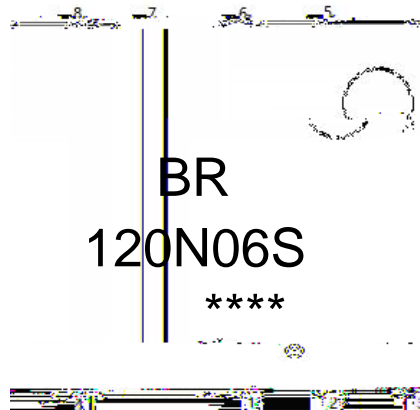
Unit:mm



REV.01 202209

REV.01 202209

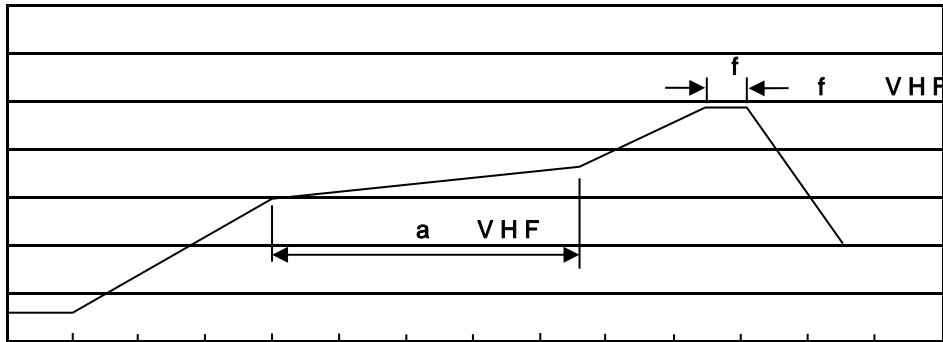
, M y f / Marking Instructions



^a ç y
(8 y , [W A
120N06S y D } ° Z
 y ÿ D Z W A k š ÿ D Z J
Note y
BR y Company Code
120N06S y Product Type
****: Lot No. Code, code change with Lot No

šWD t...•Žç (x/) / :KSVKXGZ[XK 6XULORK LUX /8 8KLRU] 9URJKXOTM 6

7HPSHUDWXXUH



7LPH VHF

^açy

- 1o• Ä ½ “ † 150 ½180 - k ž • 60 ½90sec;
- 2o• Q › “ † 245 r5 - k ž • 4 Ò 5 r0.5sec;
- 3o•D N ò i Ò 0 , † 2 ½10 - /sec.

Note:

- 1.Preheating:150~180 - , Time:60~90sec.
- 2.Peak Temp.:245 r5 - , Duration:5 r0.5sec.
- 3. Cooling Speed: 2~10 - /sec.

ÂD /Cã p ~ »] / Resistance to Soldering Heat Test Conditions

“ † y 260 r5 - ž • y 10 r1 sec. Temp.:260 r5 - Time:10 r1 sec

G P á / Packaging SPEC.

2 & x / REEL

Package Type /x¥”	Units ;>û iH					Dimension ;>û p . (unit /Ænm ³)		
	Units/Reel Q 2&	Reels/Inner Box 2& ”	Units/Inner Box Q ”	Inner Boxes/Outer Box ” ”	Units/Outer Box Q ”	Reel	Inner Box	Outer Box
PDFN5x6A	5000	2	10000	6	60000	13”x12	360x360x50	380x335x366

„ Æ y f / Notices