

### 5 é / Descriptions

TO-263 .> // x N ?ú 3 MOS « | • 'ož N-CHANNEL MOSFET in a TO-263 Plastic Package.

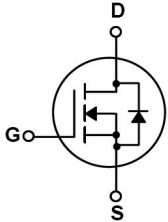
### α a / Features

z õ > z F Ø • ¼ , † ½ož  
Low gate charge, Low Crss , Fast switching.

### Đ ÷ / Applications

9 ä È • ¼ › k ÿ s v ~ k ; 6 9 › ož  
High efficiency switch mode power supplies, Electronic lamp ballasts based on half bridge, UPS .

### Ã W ] Ô . / Equivalent Circuit



### • Û - æ / Pinning



PIN1 y G      PIN 2o•4 y D      PIN 3 y S

### Z Ü B , M V / h<sub>FE</sub> Classifications & Marking

• - ~ a ç ož See Marking Instructions.

@ *f*  
Parameter

... Z  
Symbol

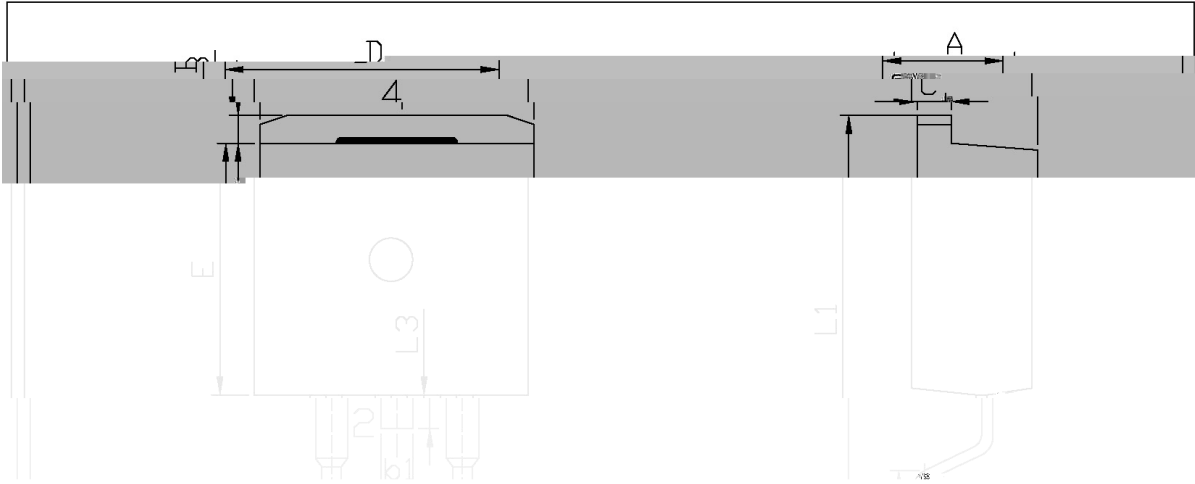
*f* ›  
Rating

% *y*

**BRCS12N65BD**  
Rev.A Aug.-2018

**DATA SHEET**

Ø □ = ) φ / Package Dimensions

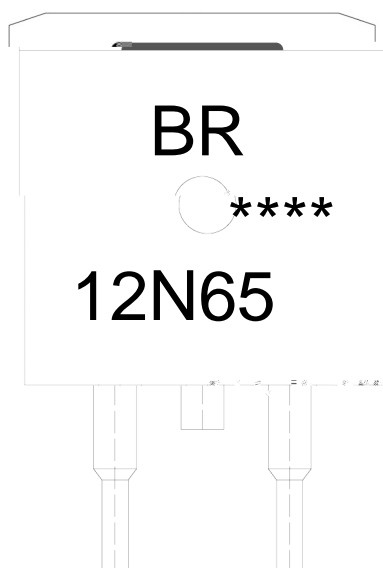


1	2.84
0	1.60

b2	0.74	0.76	1.2	2.2
C	1.20	1.40	L3	1.2
D	9.80	10.20		

T.0-263

**, M y f / Marking Instructions**



<sup>a</sup> ç y  
( 8 y                    , [ W A  
4 y                    ° Z W A  
y                    ÿ D Z W A k š ÿ D Z J ož

Note:  
BR:                    Company Code  
12N65:                Product Type.  
\*\*\*\*:                    Lot No. Code, code change with Lot No.

# BRCS12N65BD

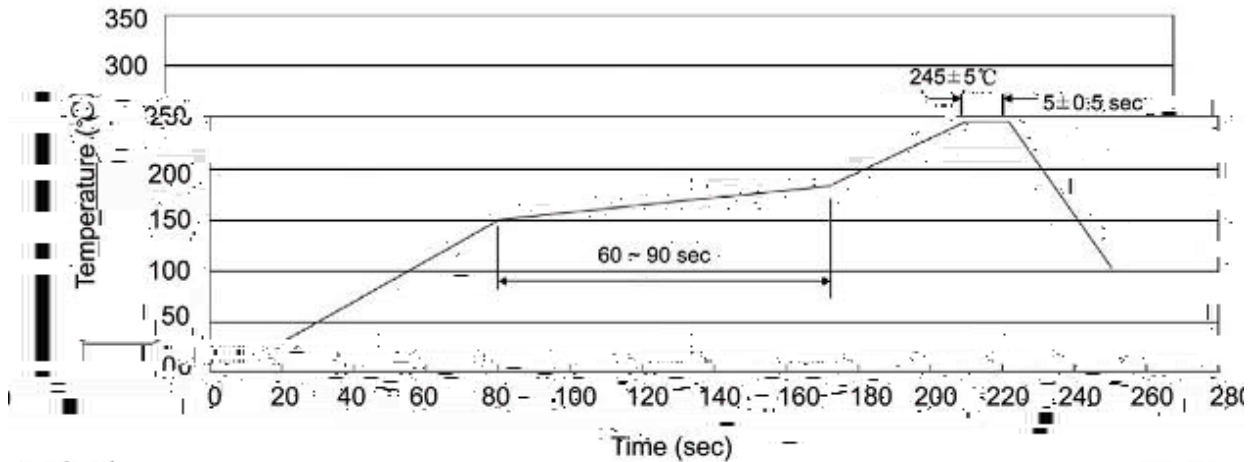
Rev.A Aug.-2018



蓝箭电子  
BLUE ROCKET ELECTRONICS

DATA SHEET

šWD t...•Žç (x/ ) / :KSVKXGZ[XK 6XULORK LUX /8 8KLRU] 9URJKXOTM 6



<sup>a</sup> ç y

1o•Ä½“† 150½180 - kž• 60½90sec;

2o•Q›“† 245 r5 - kž• 4 Ò 5 r0.5sec;

3o•D N ò i Ò 0 , † 2½10 - /sec.

Note:

1.Preheating:150~180 - , Time:60~90sec.

2.Peak Temp.:245 r5 - , Duration:5 r0.5sec.

3. Cooling Speed: 2~10 - /sec.

## ÂD /Cã p~ » ] / Resistance to Soldering Heat Test Conditions

“†y 260 r5 -

ž•y 10 r1 sec.

Temp.:260±5

Time:10±1 sec

## G P á / Packaging SPEC.

### 2 & x / REEL

Package Type ß m ù	Units g m ô h					Dimension g m d Ê (unit ! mm <sup>3</sup> )		
	Units/Reel / í	Reels/Inner Box  í /ç	Units/Inner Box /ç	Inner Boxes/Outer Box ç/±	Units/Outer Box /±	Reel	Inner Boxç	Outer Boxž
TO-263	800	1	800	5	4,000	13s x24	360x360x50	385x257x392

### ì' x / TUBE

Package Type ß m ù	Units g m ô h					Dimension g m d Ê (unit ! mm <sup>3</sup> )		
	Units/Tube /Š•	Tubes/Inner Box Š• /ç	Units/Inner Box /ç	Inner Boxes/Outer Box ç/±	Units/Outer Box /±	Tube Š•	Inner Boxç	Outer Boxž
TO-263	50	20	1,000	5	5,000	532x33x7.0	555x164x50	575x290x180

## „Đ y f / Notices