

5 é / Descriptions

SOT23-3 .> // x P 3 « | • 'ož
6 CHANNEL MOSFET in a SOT23 -3 Plastic Package.

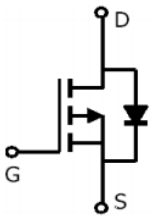
α a / Features

$V_{DS}=-60V$; $I_D=-3A$
 $R_{DS(on)1}@-10V$ 0 100m i (Type.83m i)
 $R_{DS(on)2}@-4.5V$ 0 130m i (Type.100m i)
 ... ` ' +) 7 ö Ö ä U ´ Å } L k —) í D } ož
 Qualified to AEC-Q101 Standards for High Reliability, HF Product.

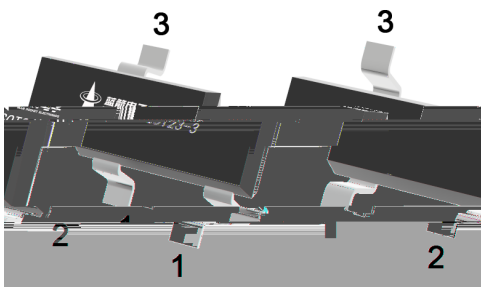
Đ ÷ / Applications

6 = 3 • ç ú • ¼ k á V ñ • } Lož
 PWM application & Load switch, Meet the stringent requirements of automotive applications.

Ã W] Ô . / Equivalent Circuit



• Ū - æ / Pinning



PIN1 y G PIN 2 y S PIN 3 y D

, M V / Marking

• - ~ a ç ož
 See Marking Instructions.

Electrical Characteristic Curve

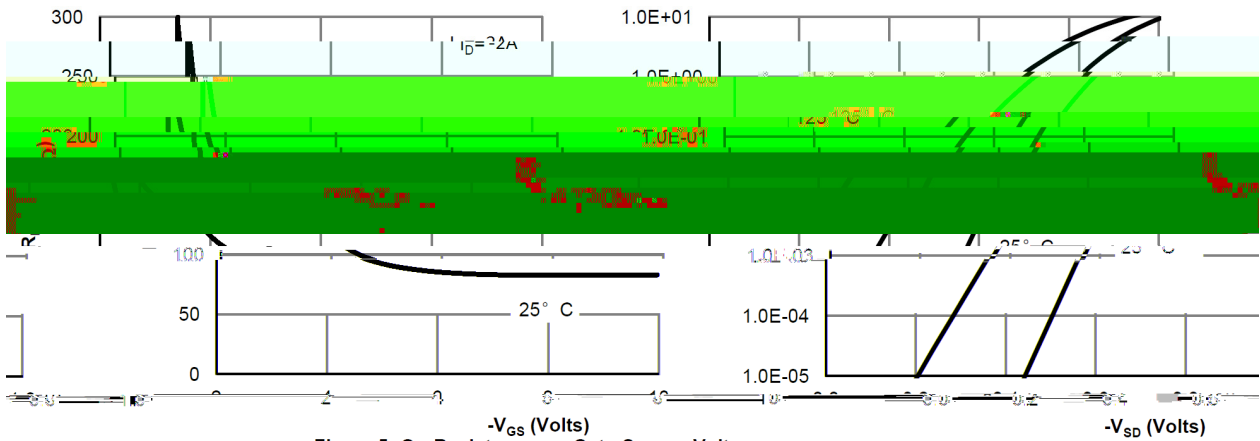
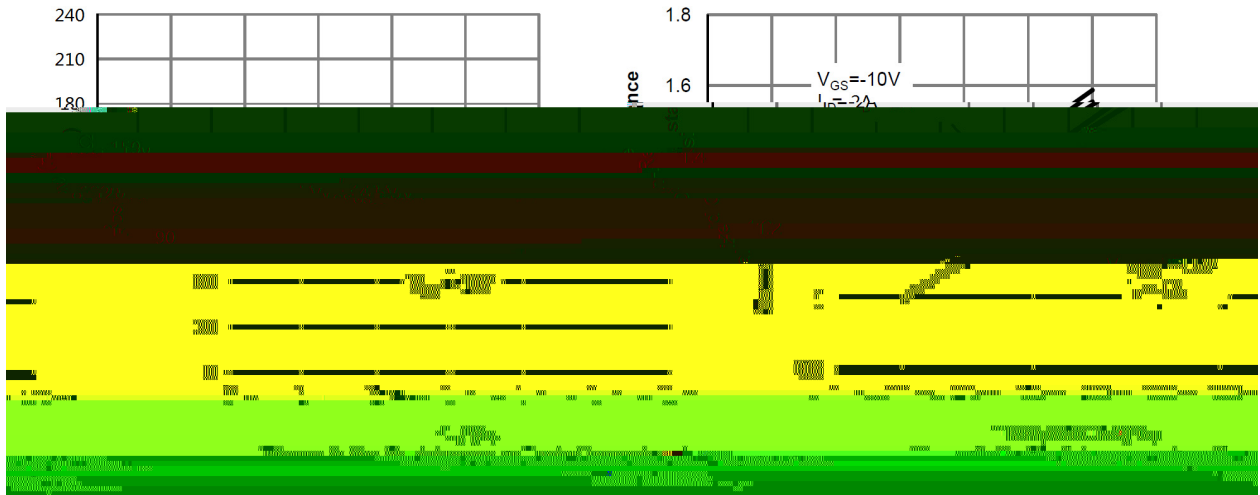
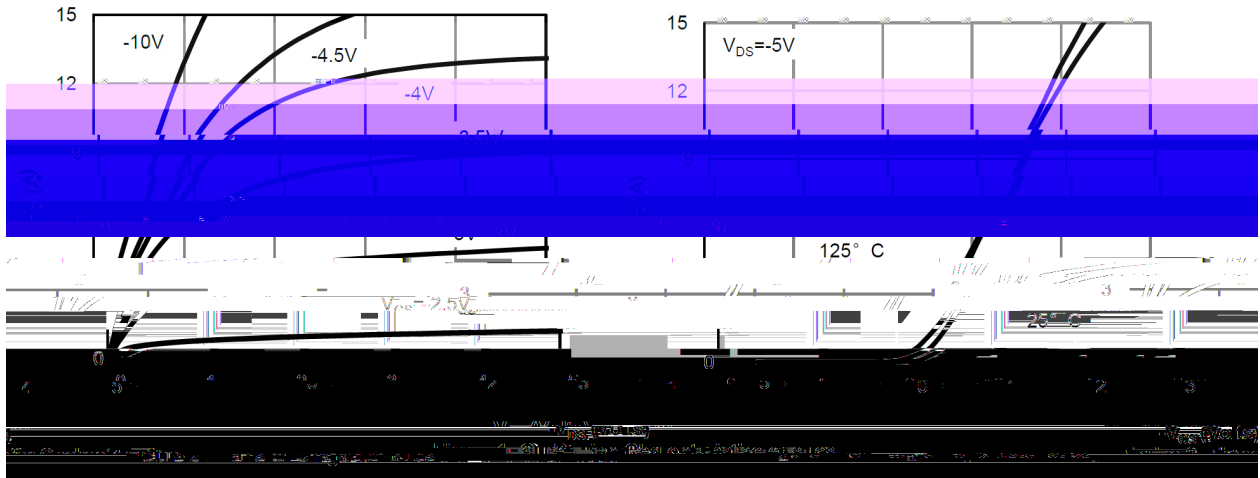
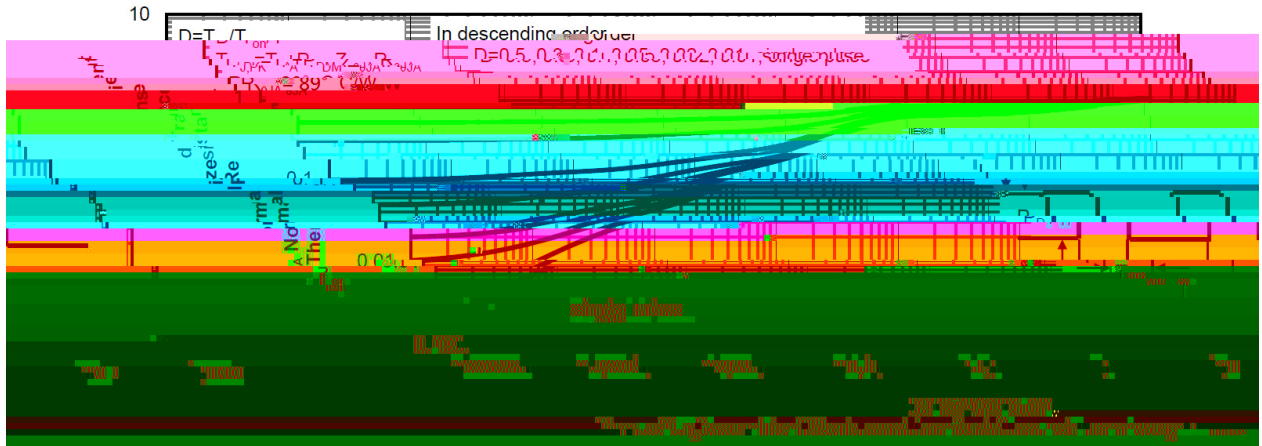
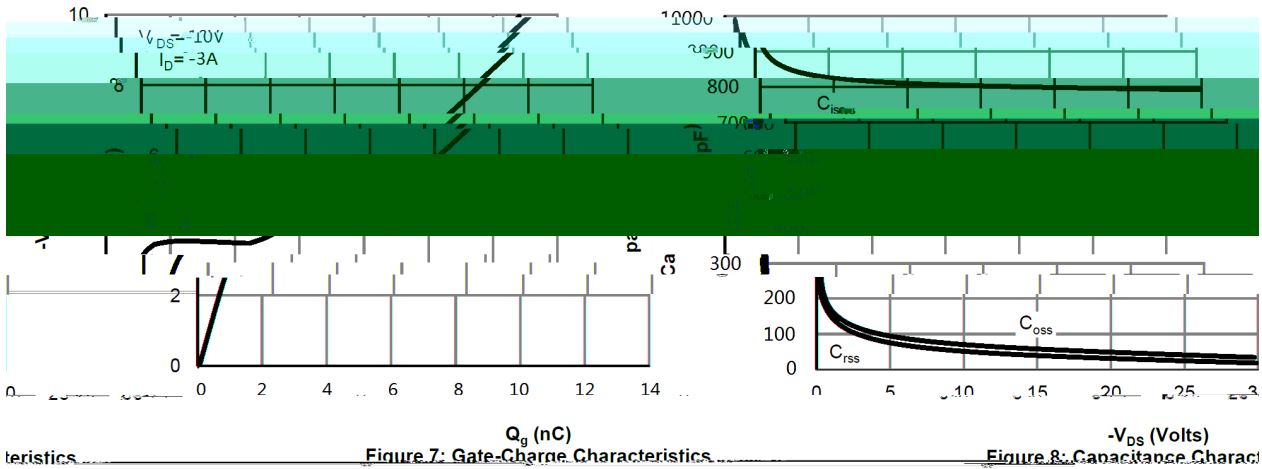


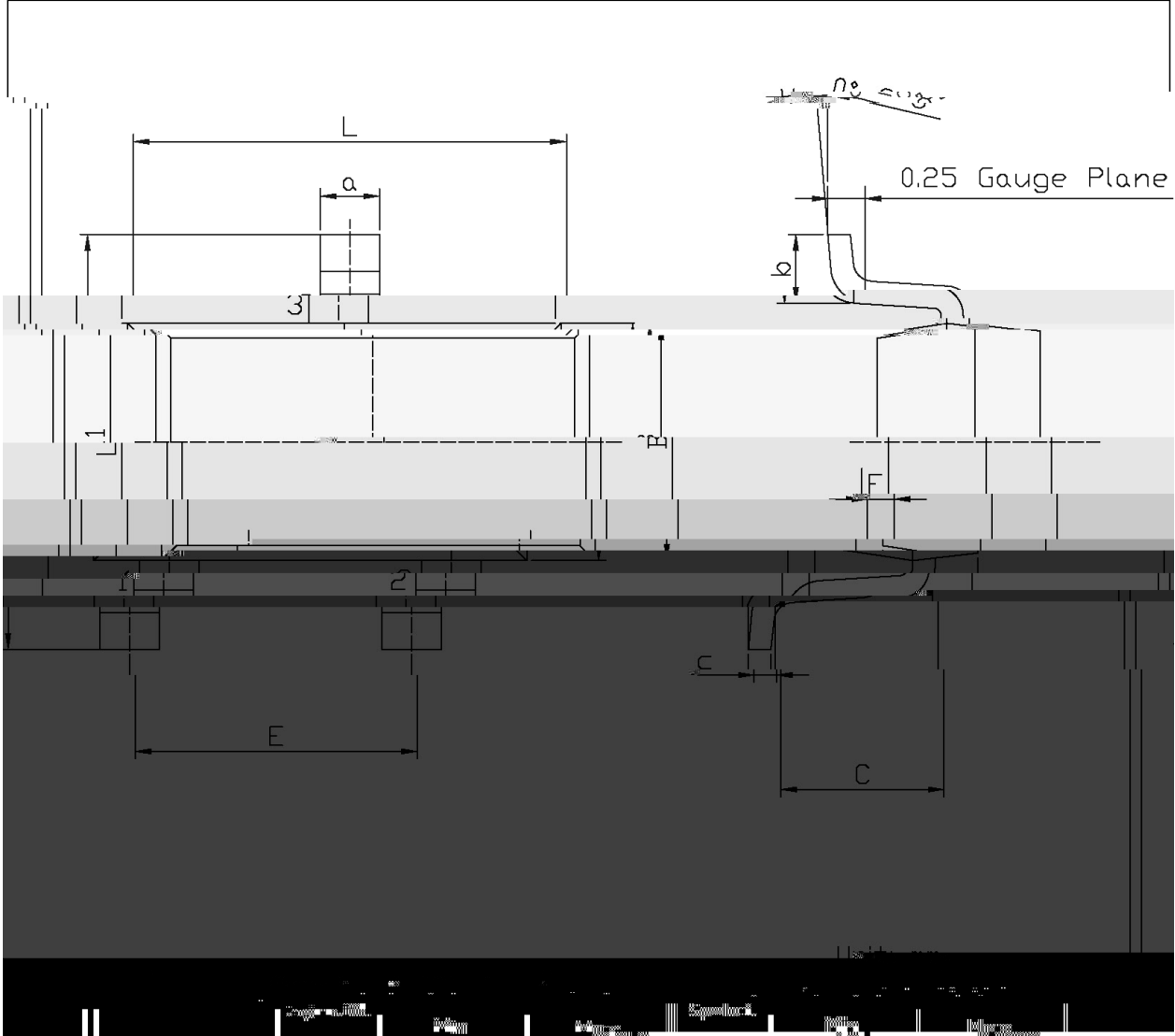
Figure 5: On-Resistance vs. Gate-Source Voltage

Figure 6: Body-Diode Characteristics

Electrical Characteristic Curve

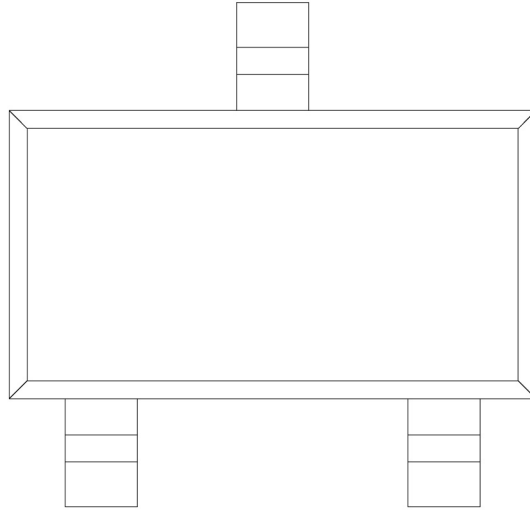


Ø □ =) φ / Package Dimensions



BRCS1C0P06MCQ

, M y f / Marking Instructions



^a ϕ y
7 y V ñ —)í D } ö œ
C1 y

šWD t...•Žϕ (x/) / :KSVKXGZ[XK 6XULORK LUX /8 8KLRU] 9URJKXOTM 6

^aϕ y

Note:

1o• Ä ½ “ † 150 ½200 - k ž • 60 ½120sec;

1.Preheating:150~200 - , Time:60~120sec.

2o• Q › “ † 255 r5 - k ž • 4 Ò 5 r0.5sec;

2.Peak Temp.:255 r5 - , Duration:5 r0.5sec.

3o•D N ò i Ò 0 , † 2 ½10 - /sec.

3.Cooling Speed: 2~10 - /sec.

ÂD /Cã p ~ »] / Resistance to Soldering Heat Test Conditions

“ † y 260 r5 -

ž • y 10 r1 sec.

Temp.:260±5

Time:10±1 sec

á!De %oY™ á À ì ' Ê "• ÁfCÐ AHyfqt y