

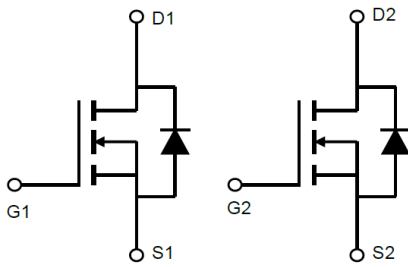
/ Descriptions

×

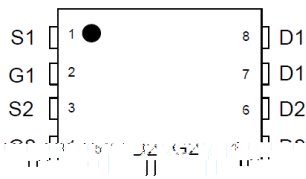
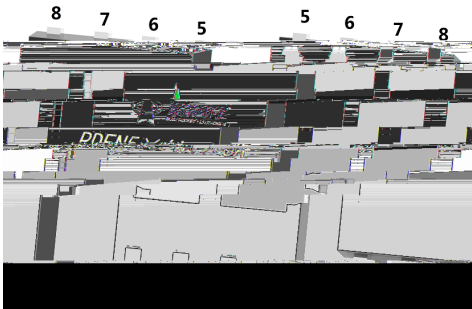
/ Features

/ Applications

/ Equivalent Circuit



/ Pinning

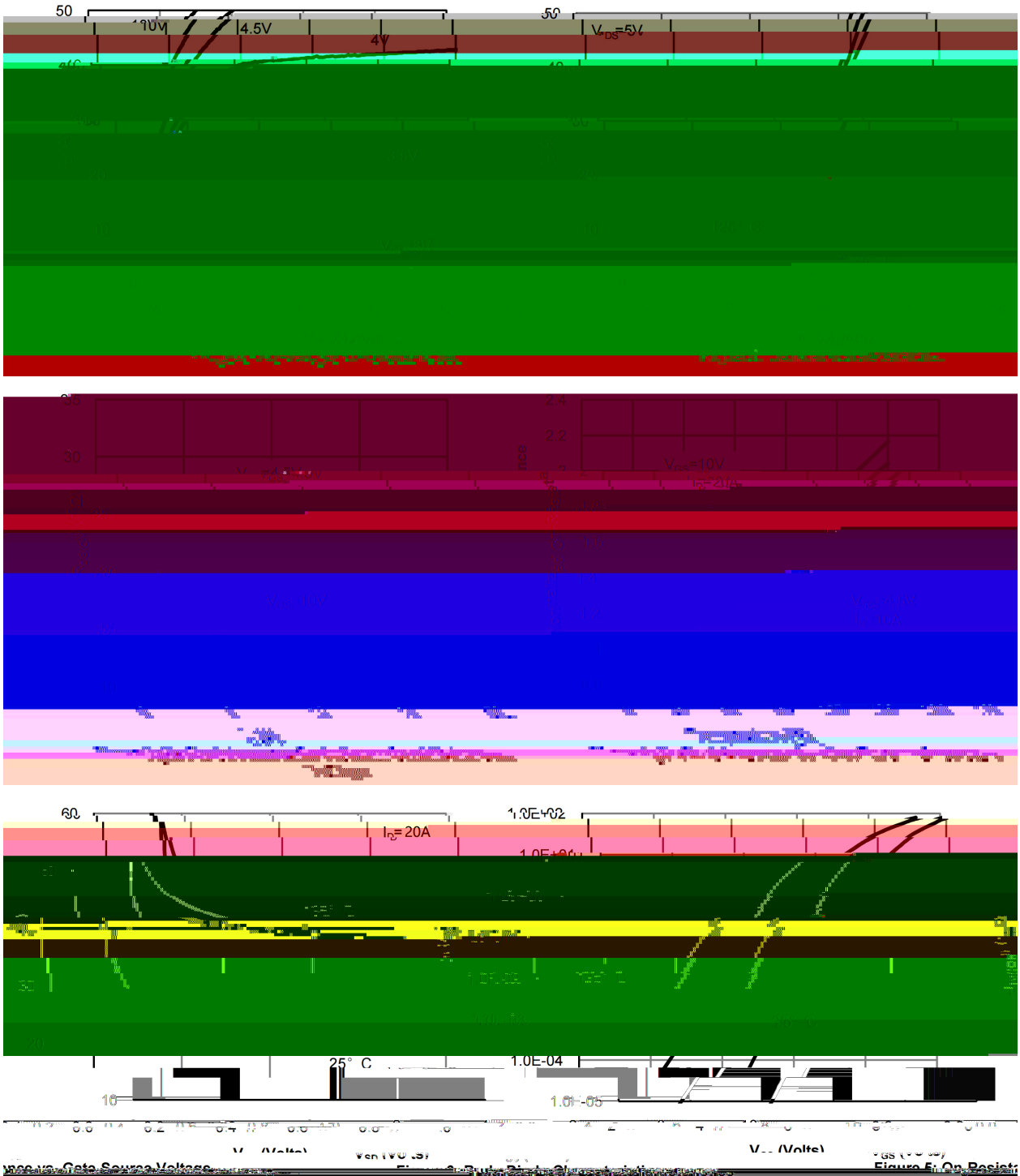


/ Marking

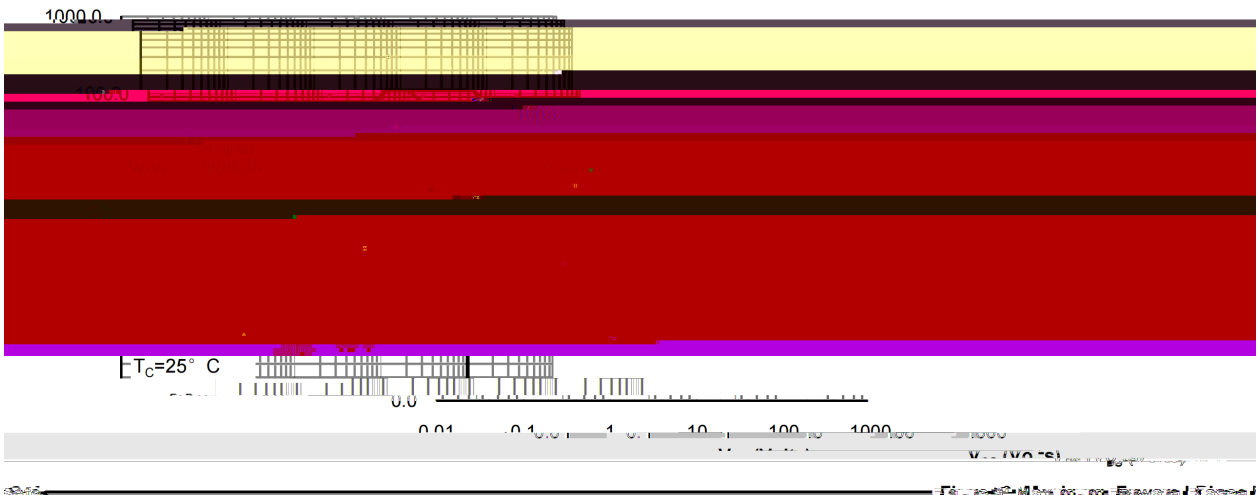
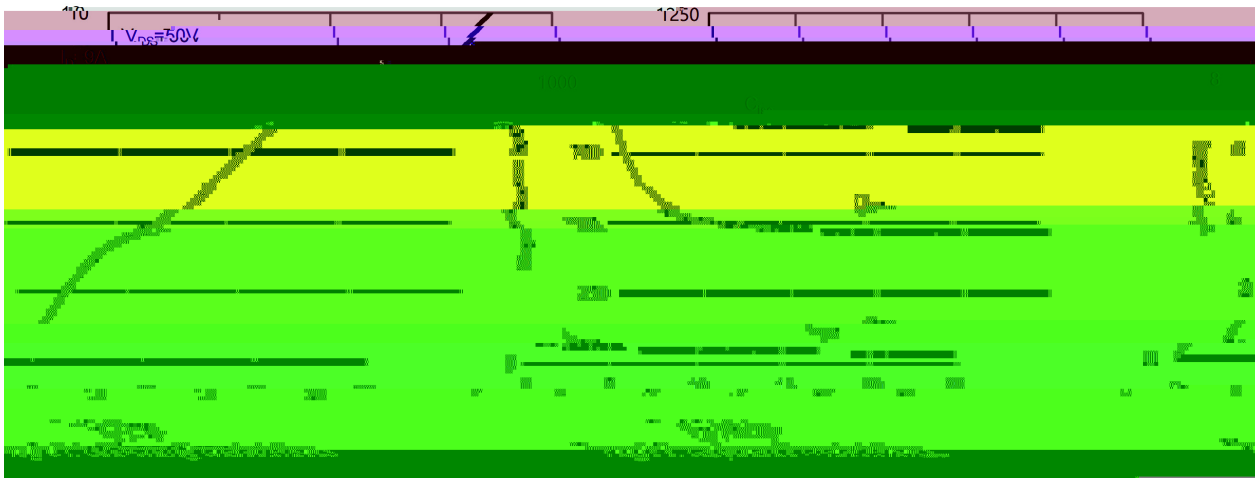
P'Ø«îU3Hõp#Çqù G™2

/ Electrical Characteristics(Ta=25)

/ Electrical Characteristic Curve



/ Electrical Characteristic Curve



Operating Area

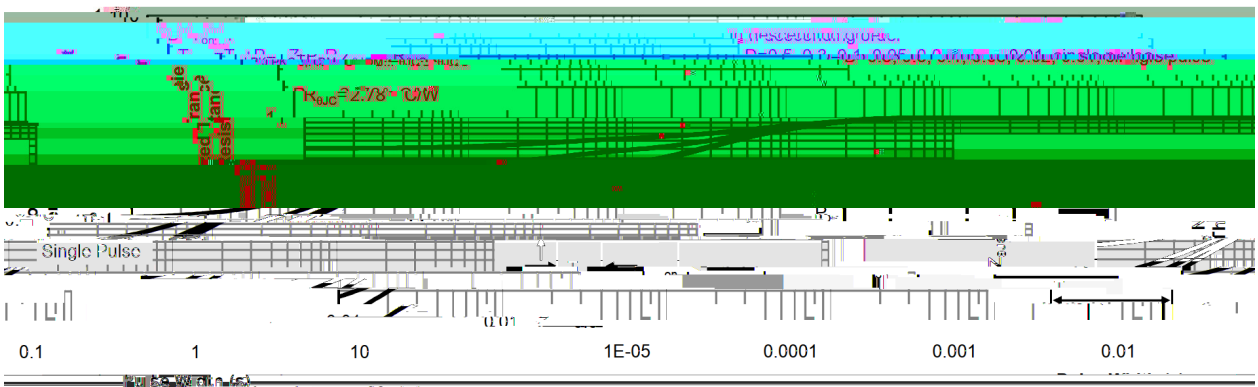
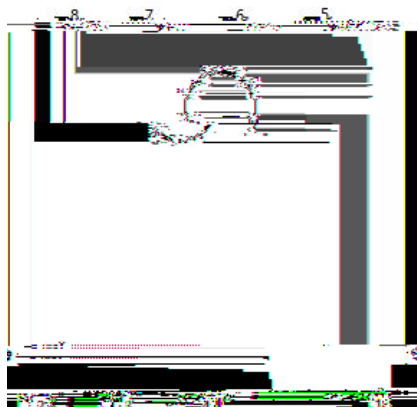


Figure 10: Normalized Maximum Transient Thermal Impedance

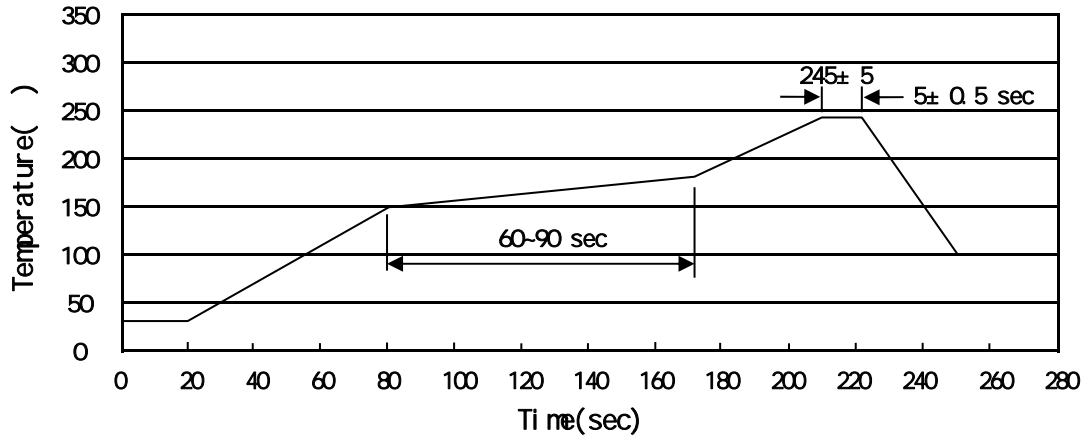
BRCS250N10SYM

/ Marking Instructions



BR

() / Temperature Profile for IR Reflow Soldering(Pb-Free)



± ± ± ±

/ Resistance to Soldering Heat Test Conditions

± ±

/ Packaging SPEC.

	Units/Reel	Reels/Inner Box	Units/Inner Box	Inner Boxes/Outer Box	Units/Outer Box	Reel	Inner Box	Outer Box
	/	/	/	/	/			

/ Notices