

BRCS2N651P

Rev.A Apr.-2018

/ Descriptions

TO-251 N MOS N-CHANNEL MOSFET in a TO-251 Plastic Package.

/ Features

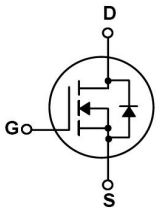
Low gate charge, low crss, fast switching.

/ Applications

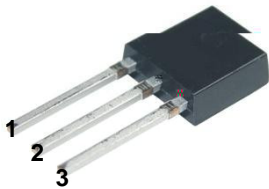
DC/DC

These devices are well suited for high efficiency switching DC/DC converters and switch mode power supplies.

/ Equivalent Circuit



/ Pinning



PIN1 G PIN 2 D PIN 3 S

/ h_{FE} Classifications & Marking

See Marking Instructions.

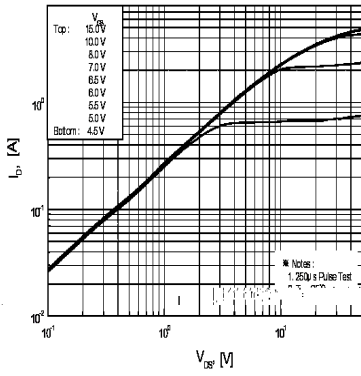
Parameter

Symbol

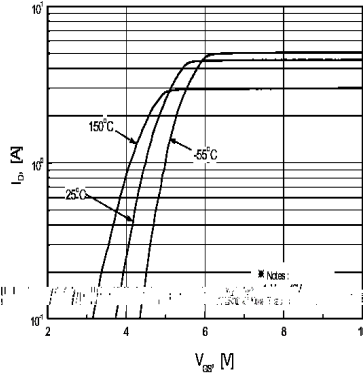
Rating

/ Electrical Characteristic Curve

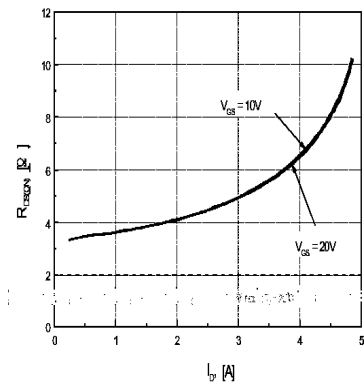
$I_D - V_{DS}$



$I_D - V_{GS}$



$R_{DS(ON)} - I_D$



$C_{iss}, C_{oss}, C_{rss} - V_{DS}$



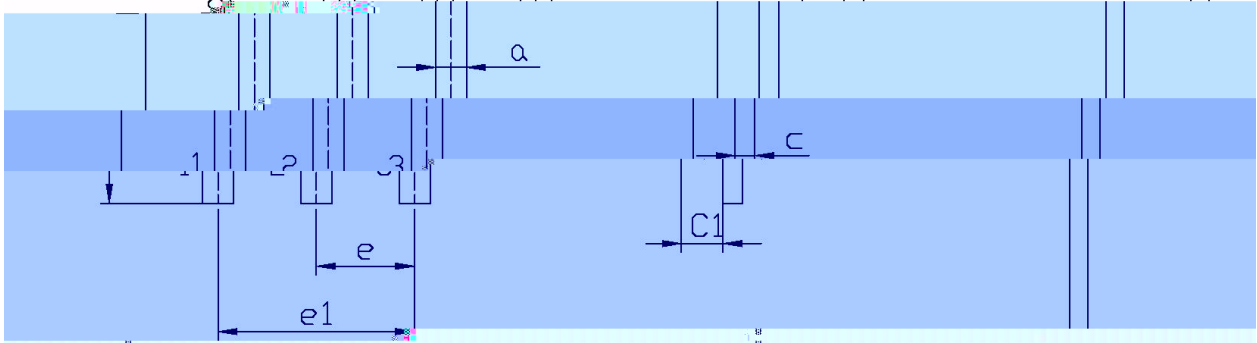
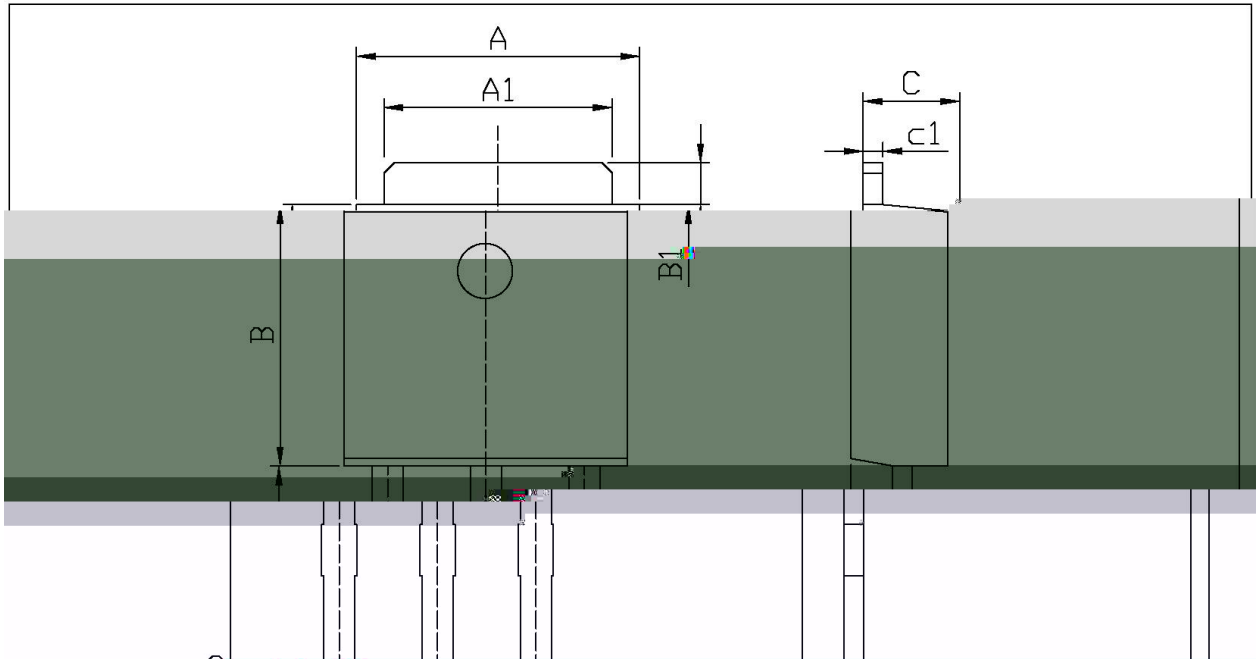
$BV_{DSS} - T_J$



$R_{DS(ON)} - T_J$



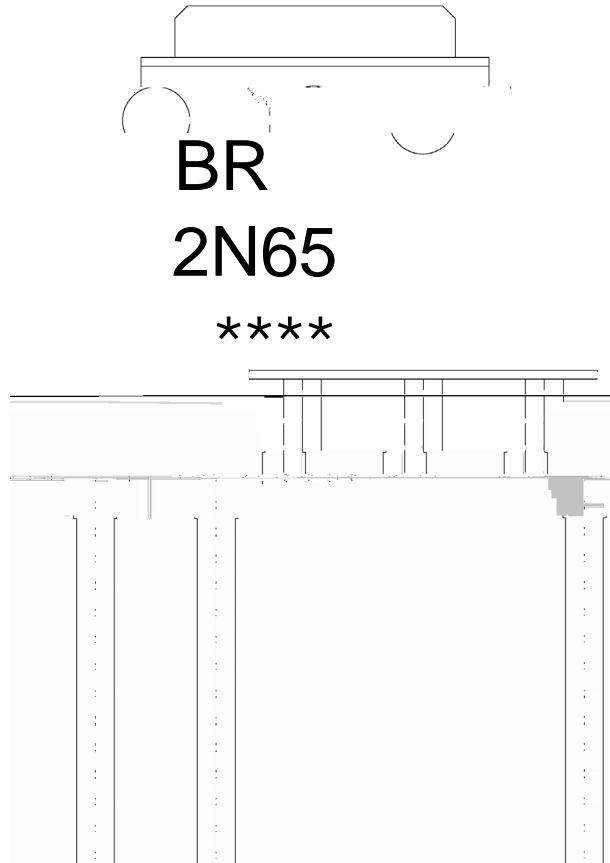
/ Package Dimensions



UNIT: MILLIMETERS

5.50	A	5.00	A1	2.40	B	1.25	B1	0.55	C	0.45	c1
2.40	e	2.40	e1	2.40	a	2.40	c	2.40	c1	0.55	

/ Marking Instructions



BR

2N65

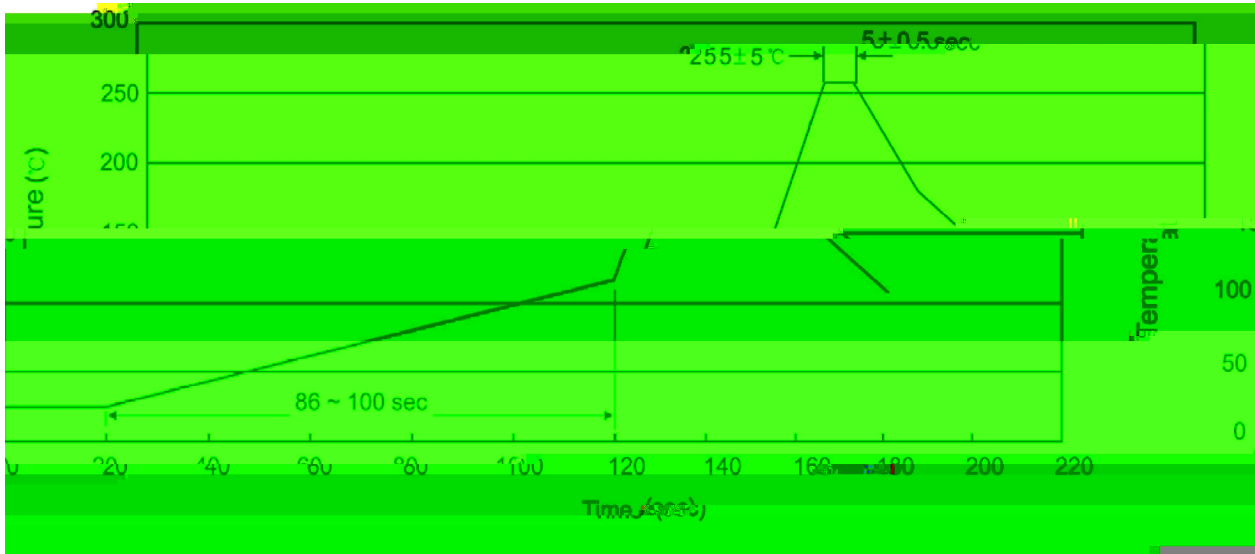
Note:

BR: Company Code

2N65: Product Type.

****: Lot No. Code, code change with Lot No.

() / Temperature Profile for Dip Soldering(Pb-Free)



Note:

- | | | | | | |
|---|-------|-----|-----------|-----------------------------------------|--------------------------------------|
| 1 | 25 | 150 | 60 | 90sec; | 1.Preheating:25~150 , Time:60~90sec. |
| 2 | 255±5 | | 5±0.5sec; | 2.Peak Temp.:255±5 , Duration:5±0.5sec. | |
| 3 | | 2 | 10 | /sec. | 3. Cooling Speed: 2~10 /sec. |

/ Resistance to Soldering Heat Test Conditions

270±5 10±1 sec. Temp.:270±5 Time:10±1 sec

/ Packaging SPEC.

/ REEL

Package Type	Units					Dimension (unit mm ³)		
	Units/Reel	Reels/Inner Box	Units/Inner Box	Inner Boxes/Outer Box	Units/Outer Box	Reel	Inner Box	Outer Box
TO-251	1,000	10	10,000	5	50,000	135×190	237×172×102	560×245×195

/ TUBE

Package Type	Units					Dimension (unit mm ³)		
	Units/Tube	Tubes/Inner Box	Units/Inner Box	Inner Boxes/Outer Box	Units/Outer Box	Tube	Inner Box	Outer Box
TO-251/252	75	48	3,600	5	18,000	526×20.5×5.25	555×164×50	575×290×180

/ Notices