

/ Descriptions

SOT-523 P MOS
P-CHANNEL MOSFET in a SOT-523 Plastic Package.

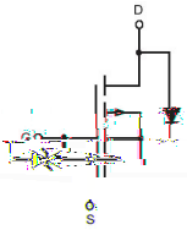
/ Features

$V_{DS} = 8V$ @ $I_D = 80mA$
 $I_{DM} = 1.5A$ (Pulse)
 $I_{SM} = 1.5A$ (Pulse)
 $I_{RM} = 1.5A$ (Pulse)
 $R_{\theta(jc)} = 100^\circ C/W$
 $R_{\theta(cs)} = 100^\circ C/W$
 $R_{\theta(ja)} = 100^\circ C/W$

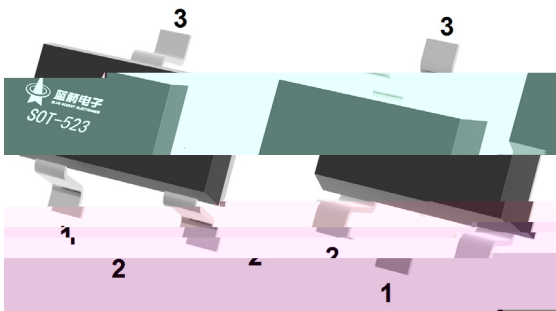
/ Applications

Load Switching, Low Current Inverters, Low Current DC/DC Converters.

/ Equivalent Circuit



/ Pinning

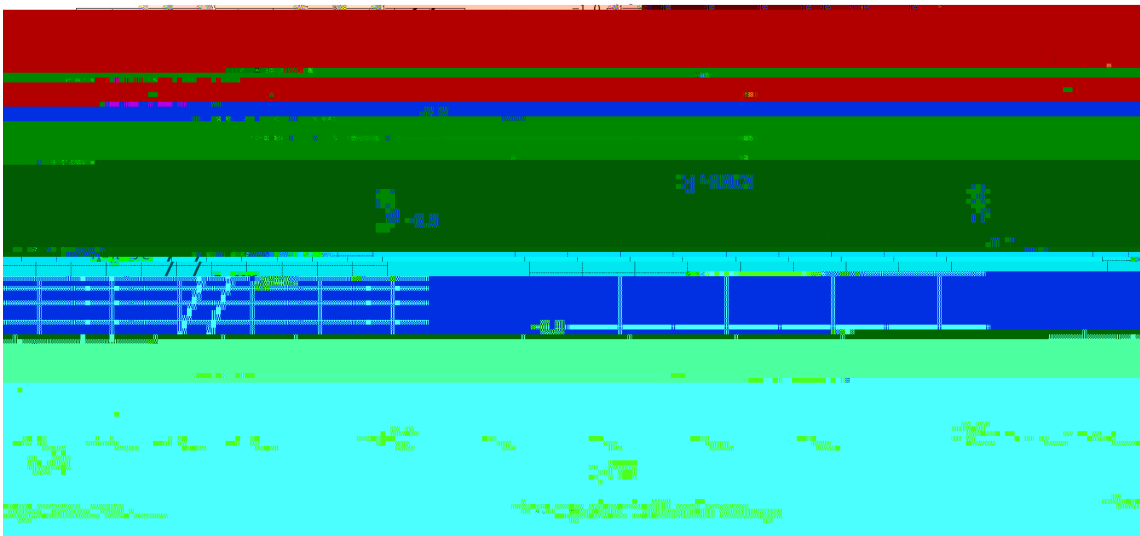
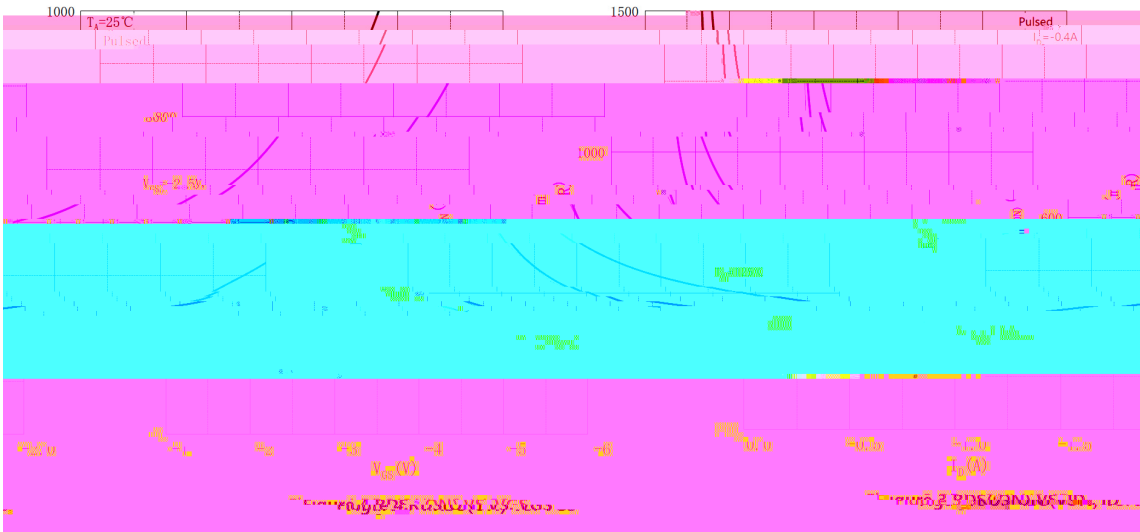
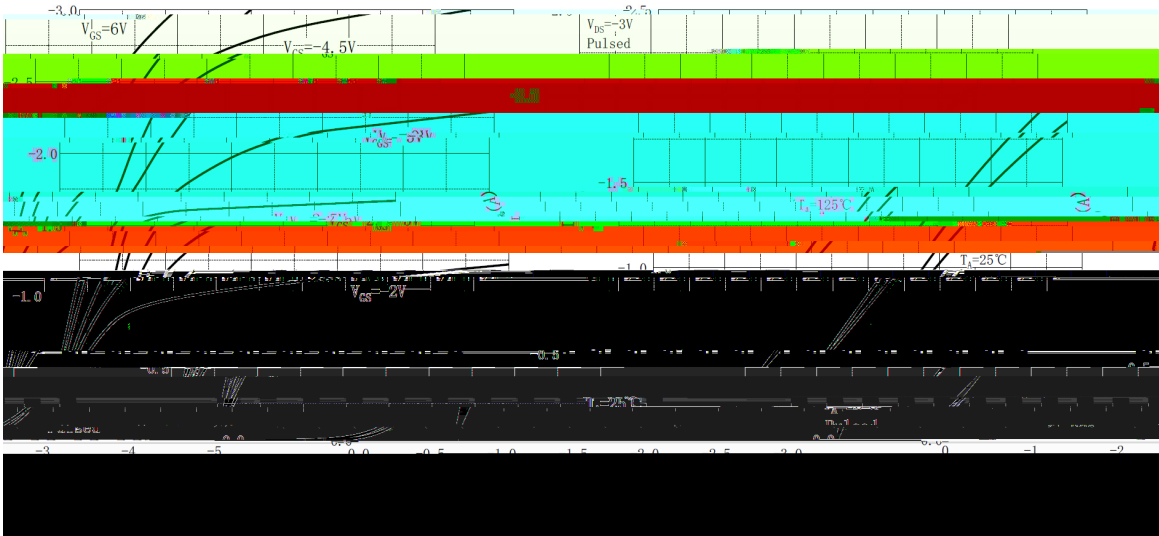


PIN 1 G PIN 2 S PIN 3 D

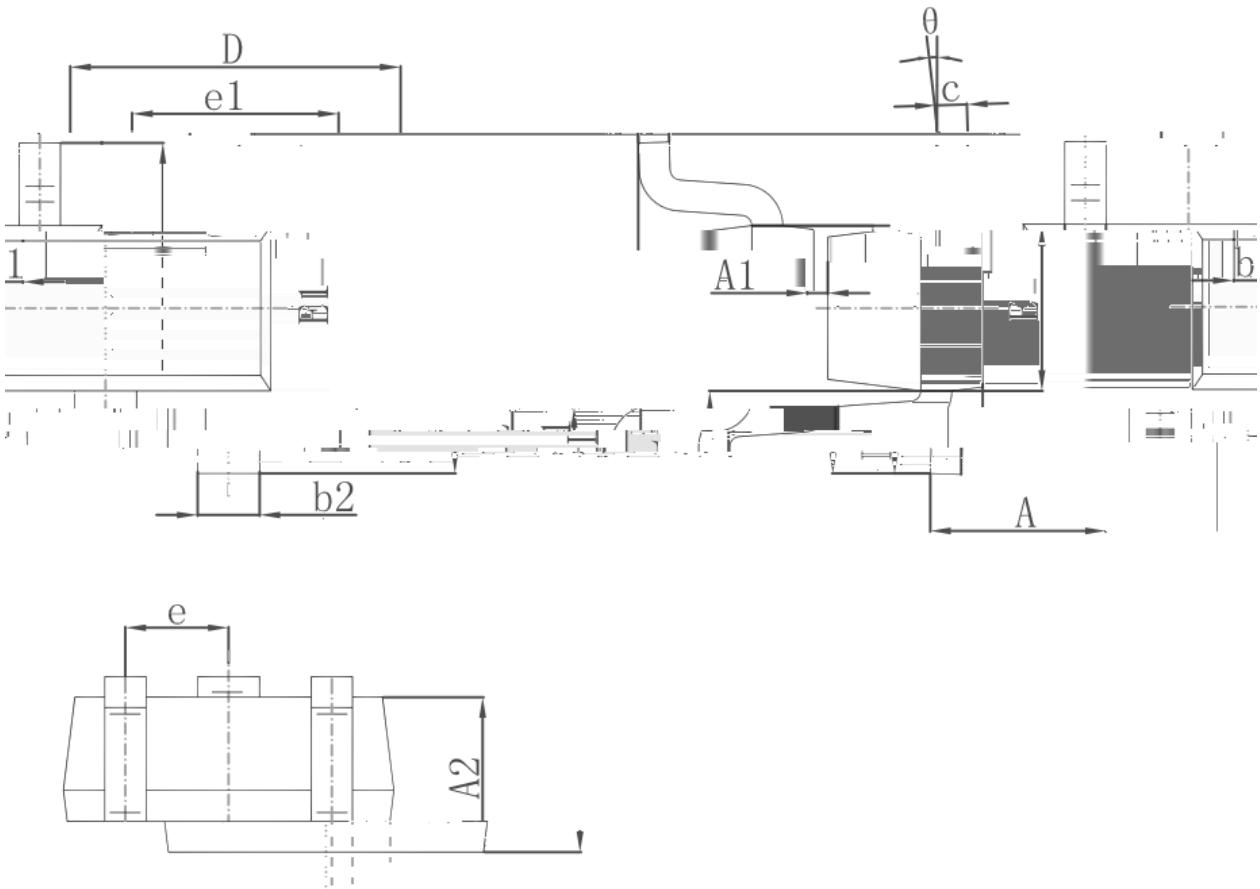
/ Marking

See Marking Instructions.

/ Electrical Characteristic Curve

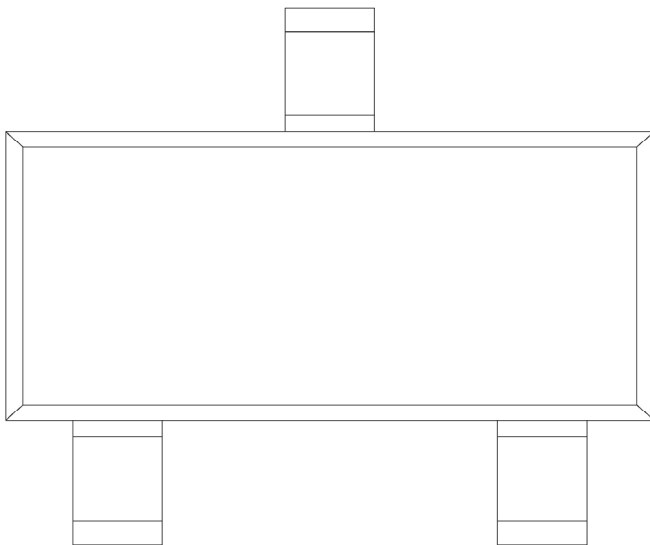


/ Package Dimensions



Symbol	Dimensions In Millimeters		Dimensions In Inches	
	Min.	Max.	Min.	Max.
A	0.700	0.900	0.028	0.035
A1	0.700	0.800	0.028	0.031
A2	0.700	0.800	0.028	0.031
b	0.200	0.300	0.008	0.012
b1	0.200	0.300	0.008	0.012
b2	0.200	0.300	0.008	0.012
c	0.028	0.035	0.001	0.001
D	0.057	0.069	0.002	0.003
e	0.020 TYP.		0.000	
e1	0.035	0.043	0.001	0.002
L	0.016 REF.		0.000	
L1	0.010	0.018	0.000	0.000
theta	0°	8°	0°	8°
e			0.500 TYP.	
e1			0.900	1.100
L			0.400 REF.	
L1			0.260	0.460
theta			0°	8°

/ Marking Instructions



39K

() / Temperature Profile for IR Reflow Soldering(Pb-Free)

Note:

- | | | | |
|---|-----------|-------------|---|
| 1 | 150 ~ 180 | 60 ~ 90sec; | 1.Preheating:150~180 , Time:60~90sec. |
| 2 | 245±5 | 5±0.5sec; | 2.Peak Temp.:245±5 , Duration:5±0.5sec. |
| 3 | 2 ~ 10 | /sec. | 3. Cooling Speed: 2~10 /sec. |

/ Resistance to Soldering Heat Test Conditions

260±5	10±1 sec.	Temp.:260±5	Time:10±1 sec
-------	-----------	-------------	---------------

/ Packaging SPEC.

/ REEL