

Rev.A Sep.-2022

N TO-263

N-CHANNEL MOSFET in a TO-263 Plastic Package.

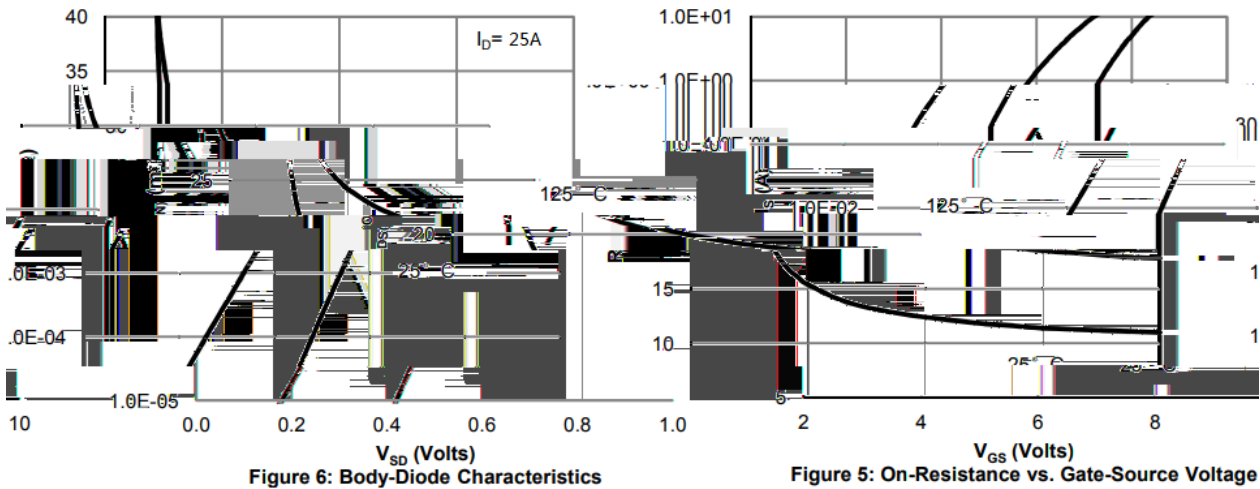
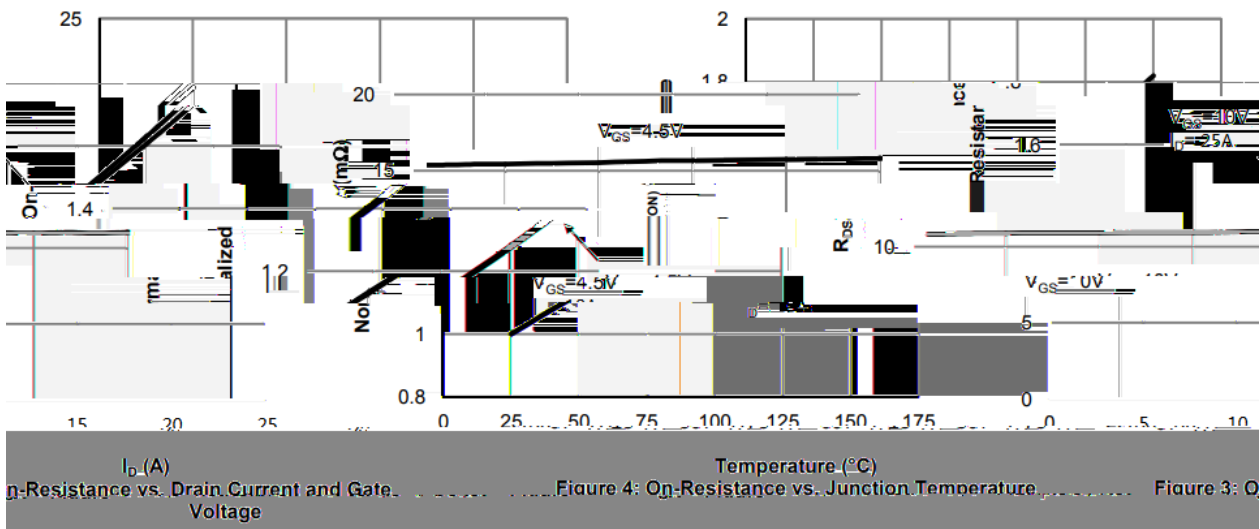
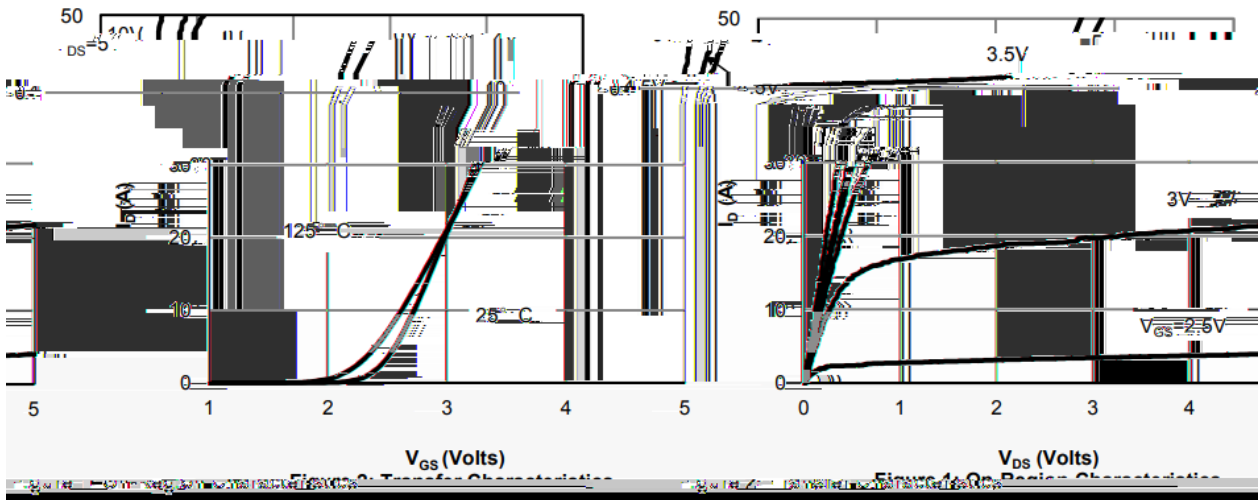
$R_{DS(on)}$

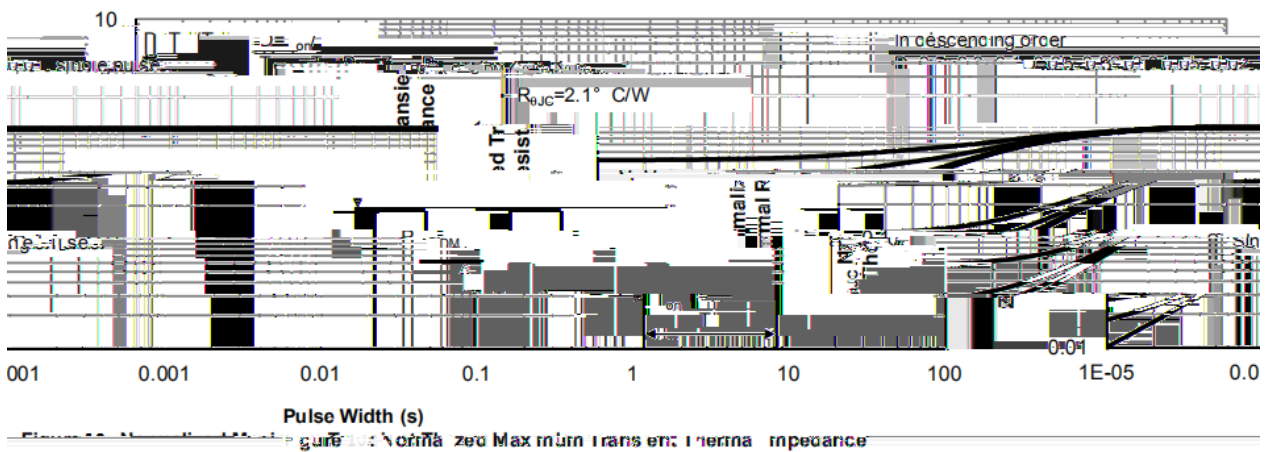
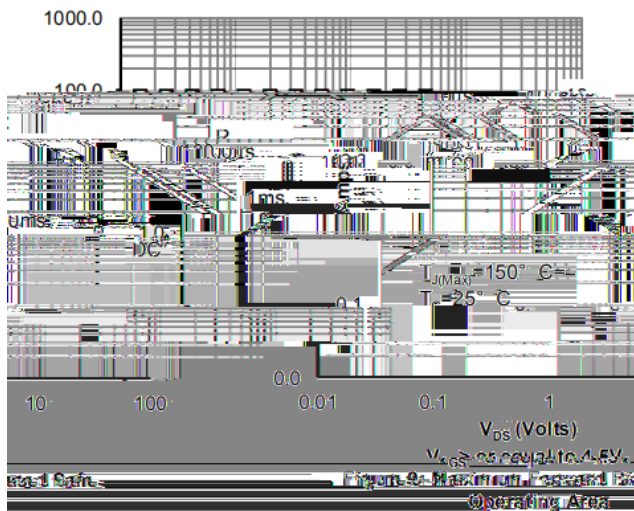
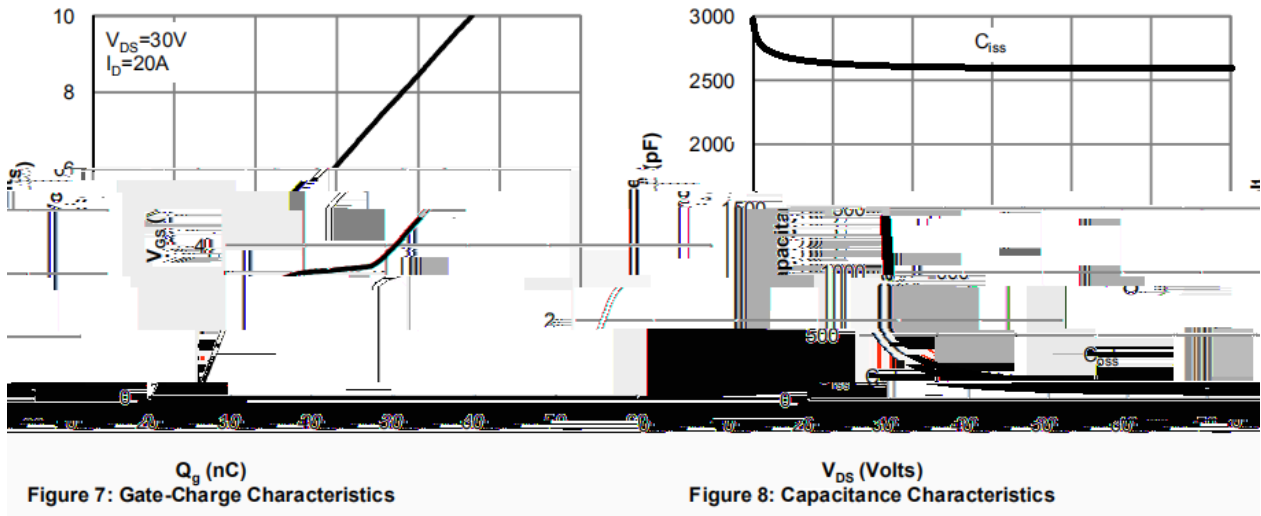
$C_{rss}$

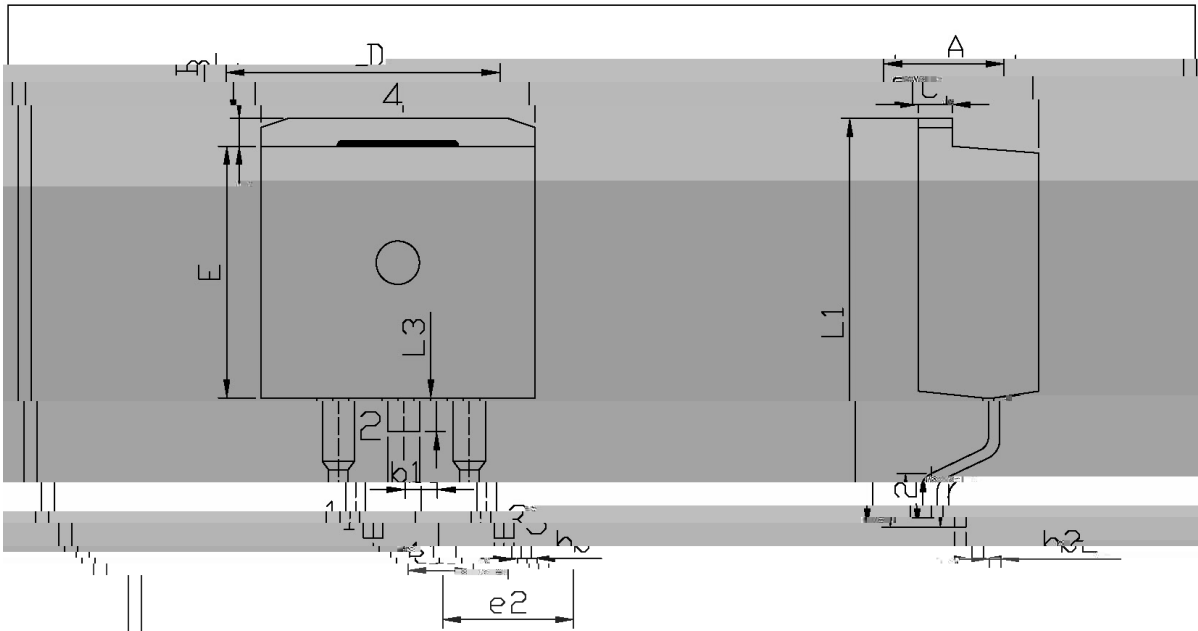
Parameter	Symbol	Rating	Unit
Drain-Source Voltage	$V_{DSS}$	60	V
Drain Current	$I_D(T_c=25^\circ\text{C})$	50	A
Drain Current - Pulsed	$I_{DM}$	200	A
Gate-Source Voltage	$V_{GS}$	$\pm 20$	V
Avalanche Current	$I_{AS}$	20	A
Single Pulsed Avalanche Energy	$E_{AS}$	170	mJ
Power Dissipation	$P_D(T_c=25^\circ\text{C})$	75	W
Storage Temperature Range	$T_{stg}$	-55 150	



Parameter	Symbol	Test Conditions	Min	Typ	Max	Unit
Turn-On Delay Time	$t_{d(on)}$	$V_{GS}=10V$ $V_{DS}=30V$ $R_L=1.5$ $R_{GEN}=3$		8		ns
Turn-On Rise Time	$t_r$			5		
Turn-Off Delay Time	$t_{d(off)}$			30		
Turn-Off Fall Time	$t_f$			5.5		

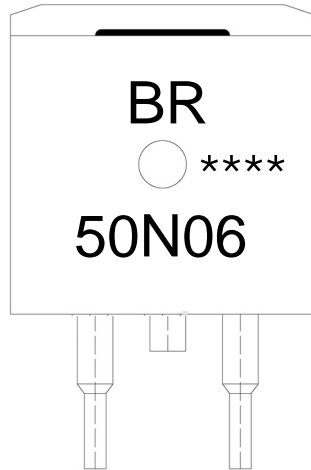






单位: mm

Dimensions In. Millimeters		Dimensions In. Millimeters		Dimensions In. Millimeters	
Max	Min	Max	Min	Max	Min
$a_1$		A	4.30	E	9.00
		B	1.00	L	



BR

50N06

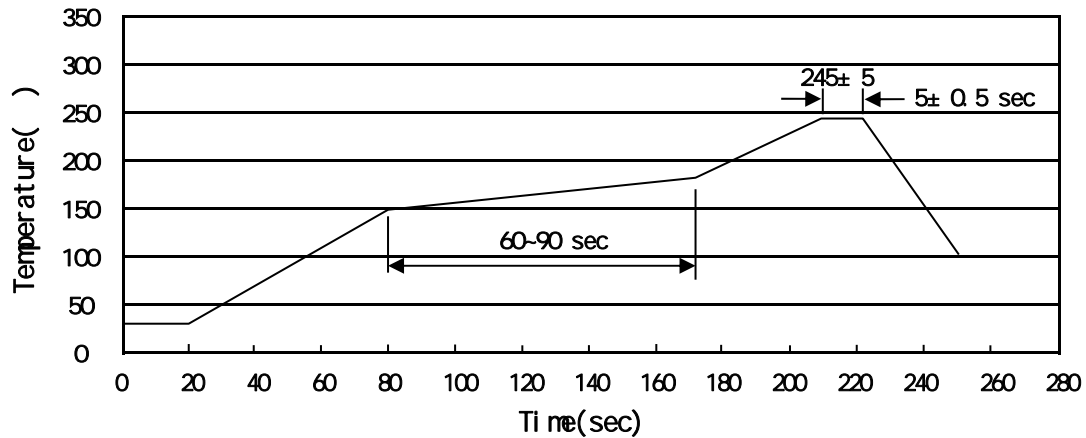
\*\*\*\*

Note:

BR: Company Code

50N06: Product Type

\*\*\*\*: Lot No. Code, code change with Lot No



Note:

- |   |       |     |           |        |   |
|---|-------|-----|-----------|--------|---|
| 1 | 150   | 180 | 60        | 90sec; | 1.Preheating:150~180 , Time:60~90sec.   |
| 2 | 245±5 |     | 5±0.5sec; |        | 2.Peak Temp.:245±5 , Duration:5±0.5sec. |
| 3 |       | 2   | 10        | /sec.  | 3. Cooling Speed: 2~10 /sec.            |

260±5

10±1 sec.

Temp.:260±5

Time:10±1 sec

/ REEL

Package Type	Units					Dimension (unit mm <sup>3</sup> )		
	Units/Reel	Reels/Inner Box	Units/Inner Box	Inner Boxes/Outer Box	Units/Outer Box	Reel	Inner Box	Outer Box
TO-263	800	1	800	6	4,800	13 ×24	360×360×50	380×335×366

/ TUBE

Package Type	Units					Dimension (unit mm <sup>3</sup> )		
	Units/Tube	Tubes/Inner Box	Units/Inner Box	Inner Boxes/Outer Box	Units/Outer Box	Tube	Inner Box	Outer Box
TO-263	50	20	1,000	5	5,000	532×33×7.0	555×164×50	575×290×180