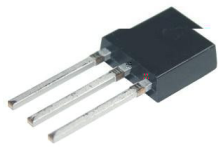
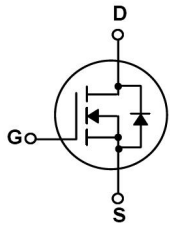


Rev.A Jul.-2016

TO-251 N MOS N-CHANNEL MOSFET in a TO-251 Plastic Package.

, $R_{DS(on)}$,
 Low gate charge, Low ON Resistance, fast switching.

Power switch circuit of adaptor and charger.

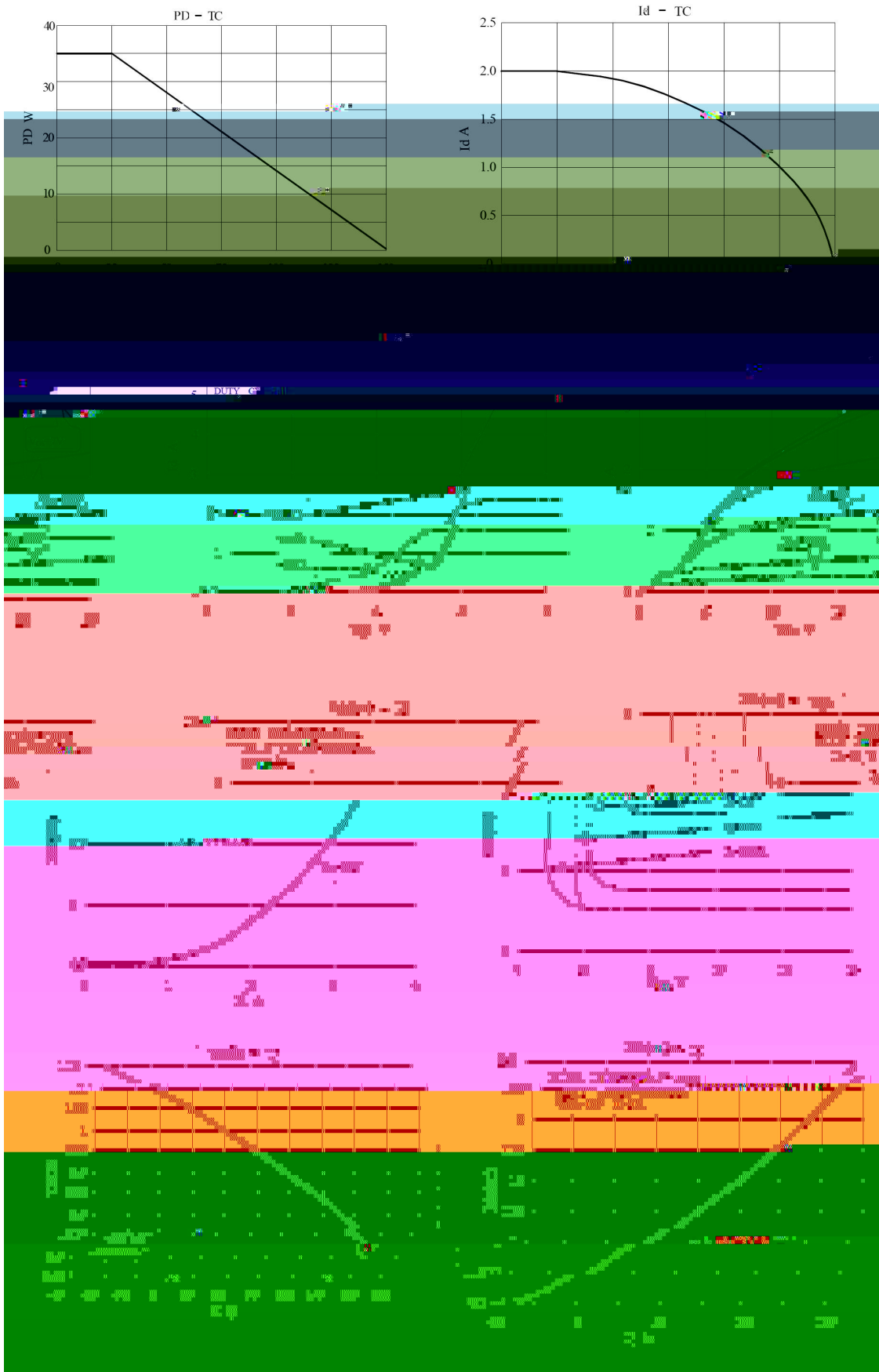


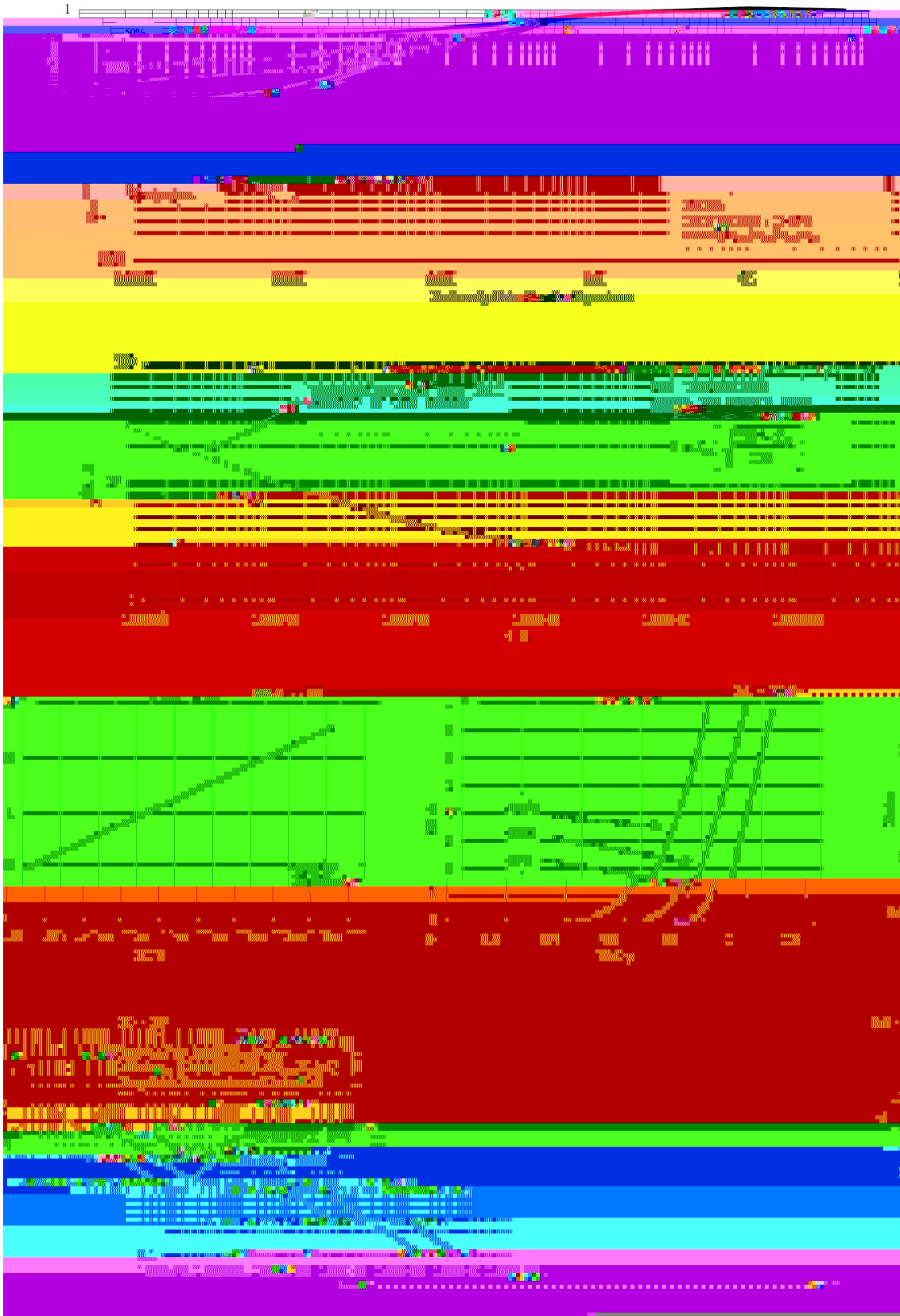
PIN1 G PIN 2 D PIN 3 S

See Marking Instructions.

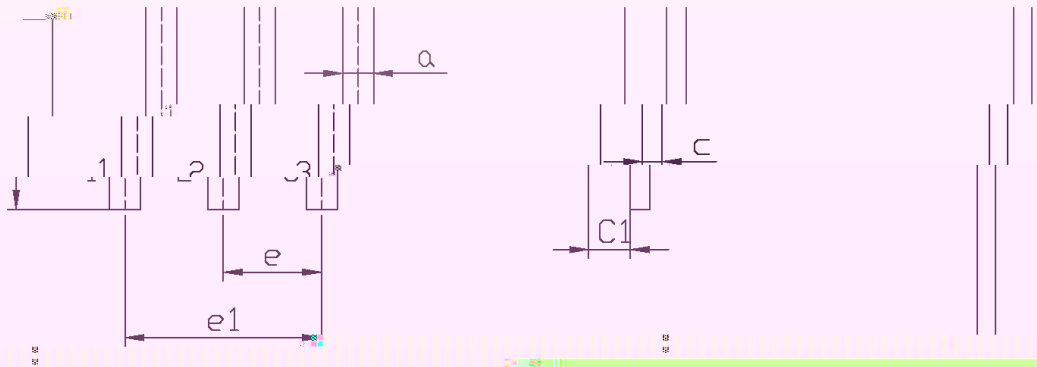
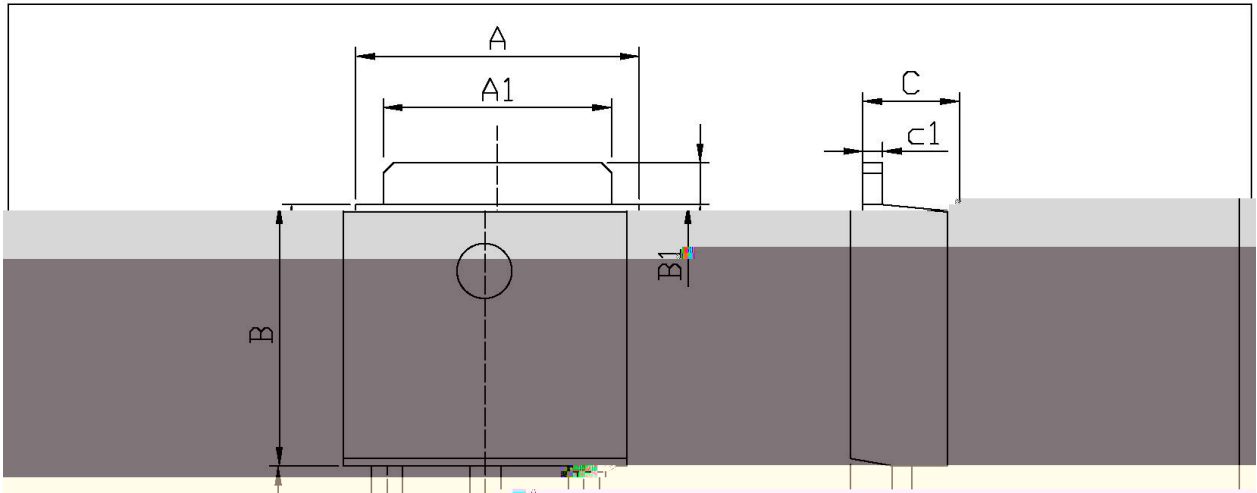
Parameter	Symbol	Test Conditions	Min	Typ	Max	Unit
Turn-On Delay Time	$t_{d(on)}$	$V_{DD}=350V$ $I_D=2.0A$ $V_{GS}=10V$ $R_G=25$		7.8		ns
Turn-On Rise Time	t_r			5.5		ns
Turn-Off Delay Time	$t_{d(off)}$			33		ns
Turn-Off Fall Time	t_f			16		ns
Total Gate Charge	Q_g	$I_D=2.0A$ $V_{DD}=350V$ $V_{GS}=10V$		8.5		nC
Gate to Source Charge	Q_{gs}			1.5		nC

Gate to Drain (" Miller"

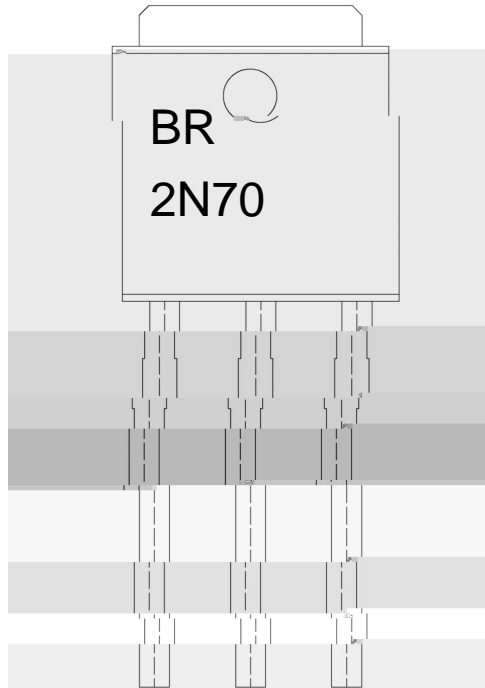








Dimensions in Micrometers		Symbol	Dimensions in Millimeters		Symbol
Min	Max		Min	Max	
6.45	6.75	a	0.50	0.75	A



BR

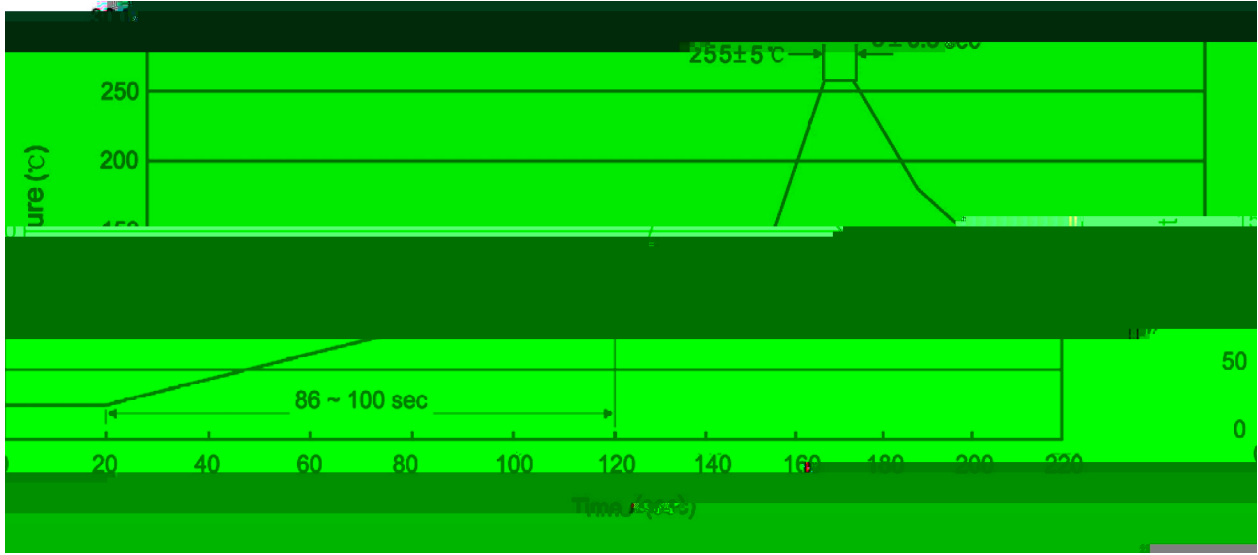
2N70

Note:

BR: Company Code

2N70: Product Type.

****: Lot No. Code, code change with Lot No.


Note:

- | | | | | | |
|---|-------|-----|-----------|---|--------------------------------------|
| 1 | 25 | 150 | 60 | 90sec; | 1.Preheating:25~150 , Time:60~90sec. |
| 2 | 255±5 | | 5±0.5sec; | 2.Peak Temp.:255±5 , Duration:5±0.5sec. | |
| 3 | | / | | | |