

/ Descriptions

60V 5.0A SMBF

Surface Mount Schottky Barrier Rectifier, Reverse Voltage:60V,Forward Current:5.0A,SMBF thin package.

/ Features

Low power loss, high efficiency, High forward surge current capability, For use in low voltage, high frequency inverters, and polarity protection applications,For surface mounted applications.Halogen free product.

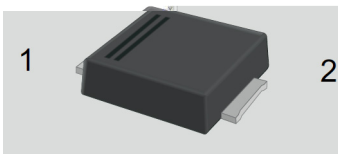
/ Applications

General purpose.

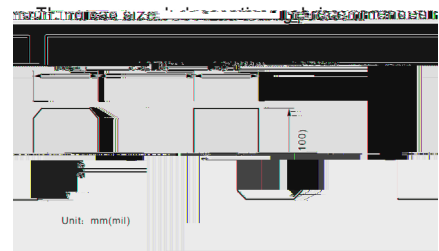
/ Equivalent Circuit



/ Pinning



PIN	DESCRIPTION
1	Cathode
2	Anode



/ Marking

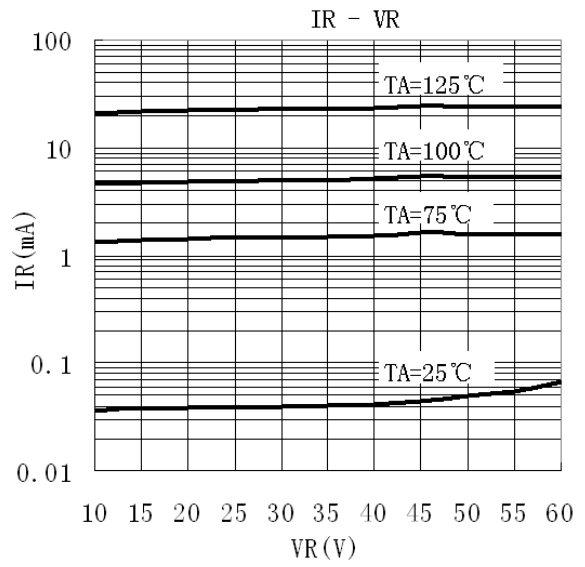
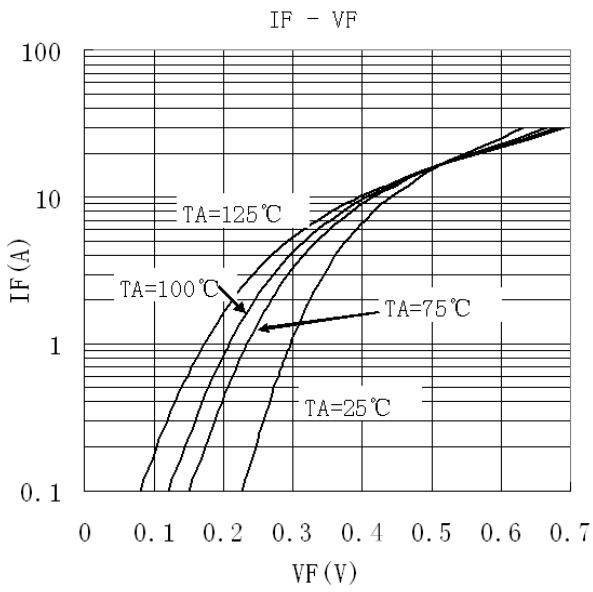
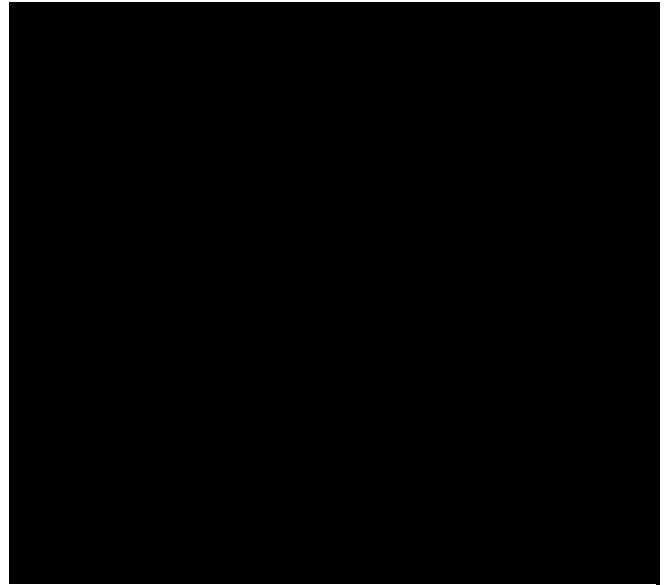
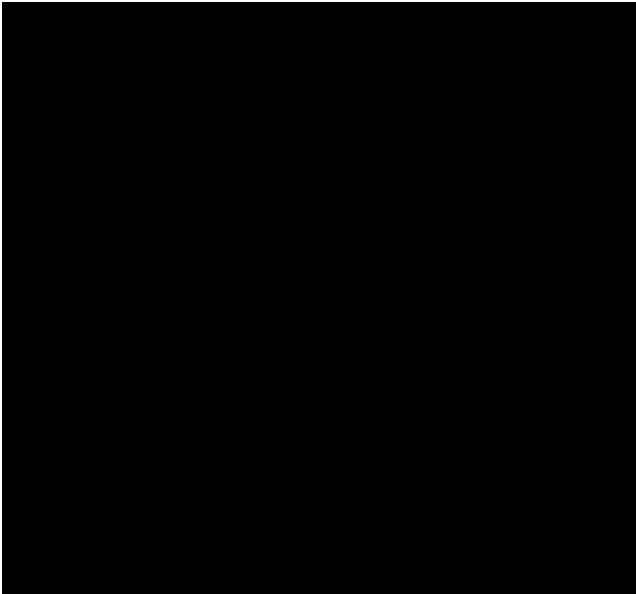
Type number	Marking code
BRLV5T60BF	5T60

Notes:

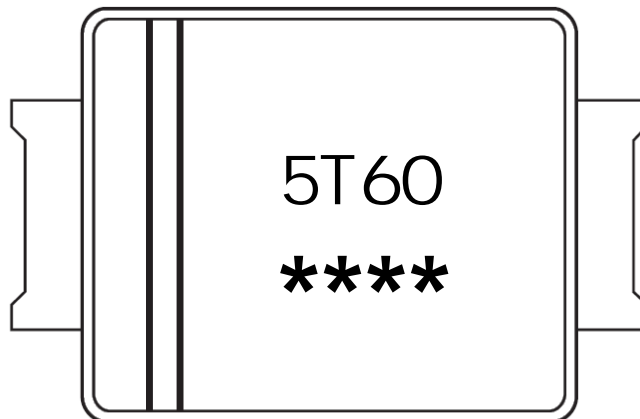
- 1 Mounted at 1MHz and applied reverse voltage of 4V D.C.
- 2 Mounted on a FR4 PCB, single-sided copper, with 100cm² copper pad area.

Parameter	Symbol	Test condition	Rating			Unit
			MIN.	TYP.	MAX.	

/ Electrical Characteristic Curve



/ Marking Instructions



5T60

1 *

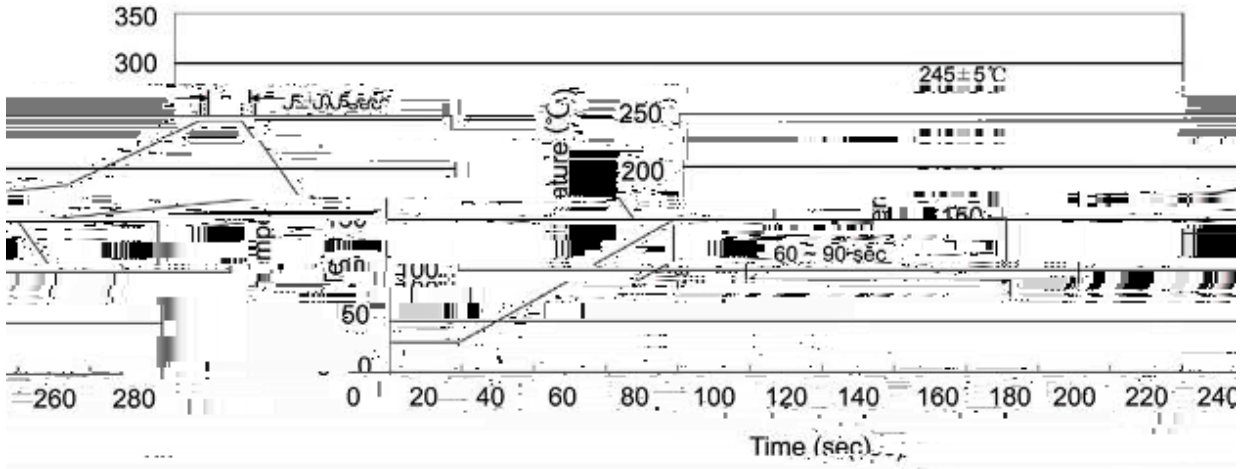
3 *

Note:

5T60 Product Type Code

**** Lot No. Code The 1st * means:YM Code The last 3 * means:little Lot No Code

() / K\ d g\ rXk\ r\ Prf]i\ d]f r ll I \]f w Jf q \rie^ ŽPY-Fr\ž



Note:

- 1 150 180 60 90sec; 1.Preheating:150~180 , Time:60~90sec.
- 2 245±5 5±1 T5f7 26f92.7om)102.8()-5.7)-5.7)