

5 é / Descriptions

Ý ½ Ê Ö 8 â ' k F g 9 y < d < k 3 g v y ' k V ° 9 3 (, / x o ž
Surface Mount Superfast Recovery Rectifier, Reverse Voltage:50 to600V, Forward Current:1.0A, SMOB thin package.

α a / Features

ì ø d ý / ì k F g Ê Ö ž • ½ k — ` ... ` , (8 U . 9 6 X + ; k 9 n μ É x o ž —) í D } o ž
Glass Passivated Chip Junction, Fast reverse recovery time, Lead free in comply with EU R 2HS 2011/65/EU directives, For surface mounted applications. Halogen free product.

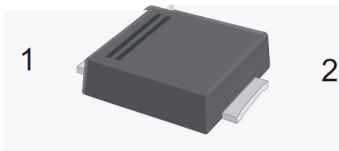
Đ ÷ / Applications

%² " (General purpose.

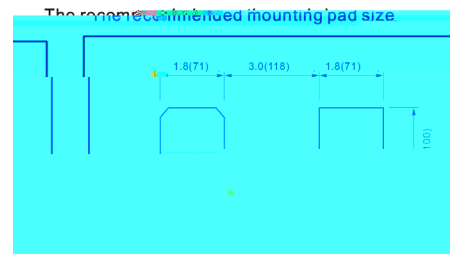
Ã W] Ô . / Equivalent Circuit



• Ů - æ / Pinning



PIN	DESCRIPTION
1	Cathode
2	Anode



, M V / Marking

• - ~ a ç o ž See Marking Instructions

ES1ABF~ES1JBF

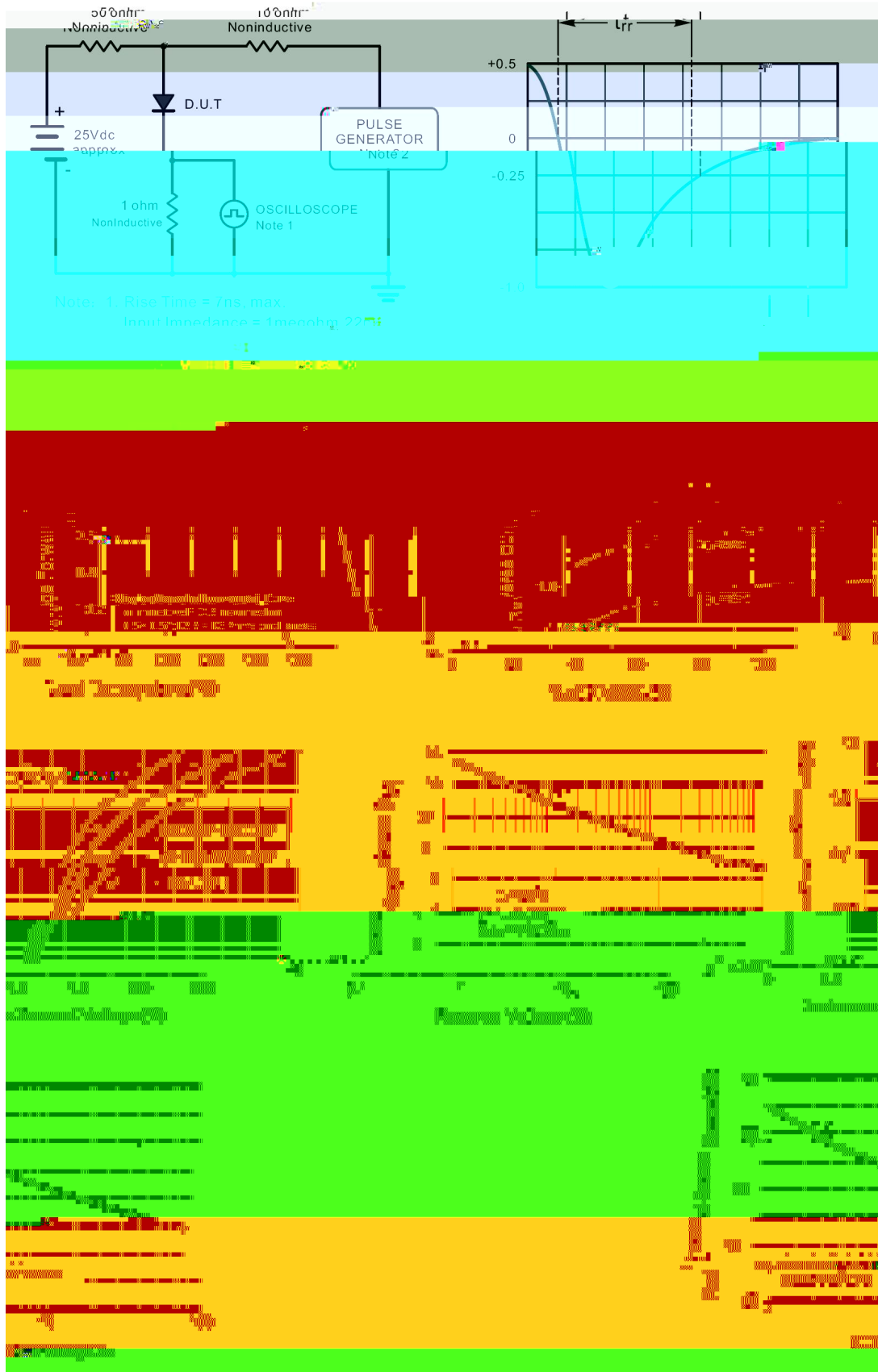
Rev.E May.-2019



DATA SHEET

@ f Parameter	... Z Symbol	f > Rating							% y Unit
		ES1ABF	ES1BBF	ES1CBF	ES1DBF	ES1EBF	ES1GBF	ES1JBF	
Maximum Repetitive Peak Reverse Voltage	V _{RRM}	50	100	150	200	300	400	600	V
Maximum RMS voltage	V _{RMS}	35	70	105	140	210	280	420	V
Maximum DC Blocking Voltage	V _{DC}	50	100	150	200	300	400	600	V
Maximum Average Forward Rectified Current at T _L = 100	I _{F(AV)}	1.0							A

Electrical Characteristic Curve

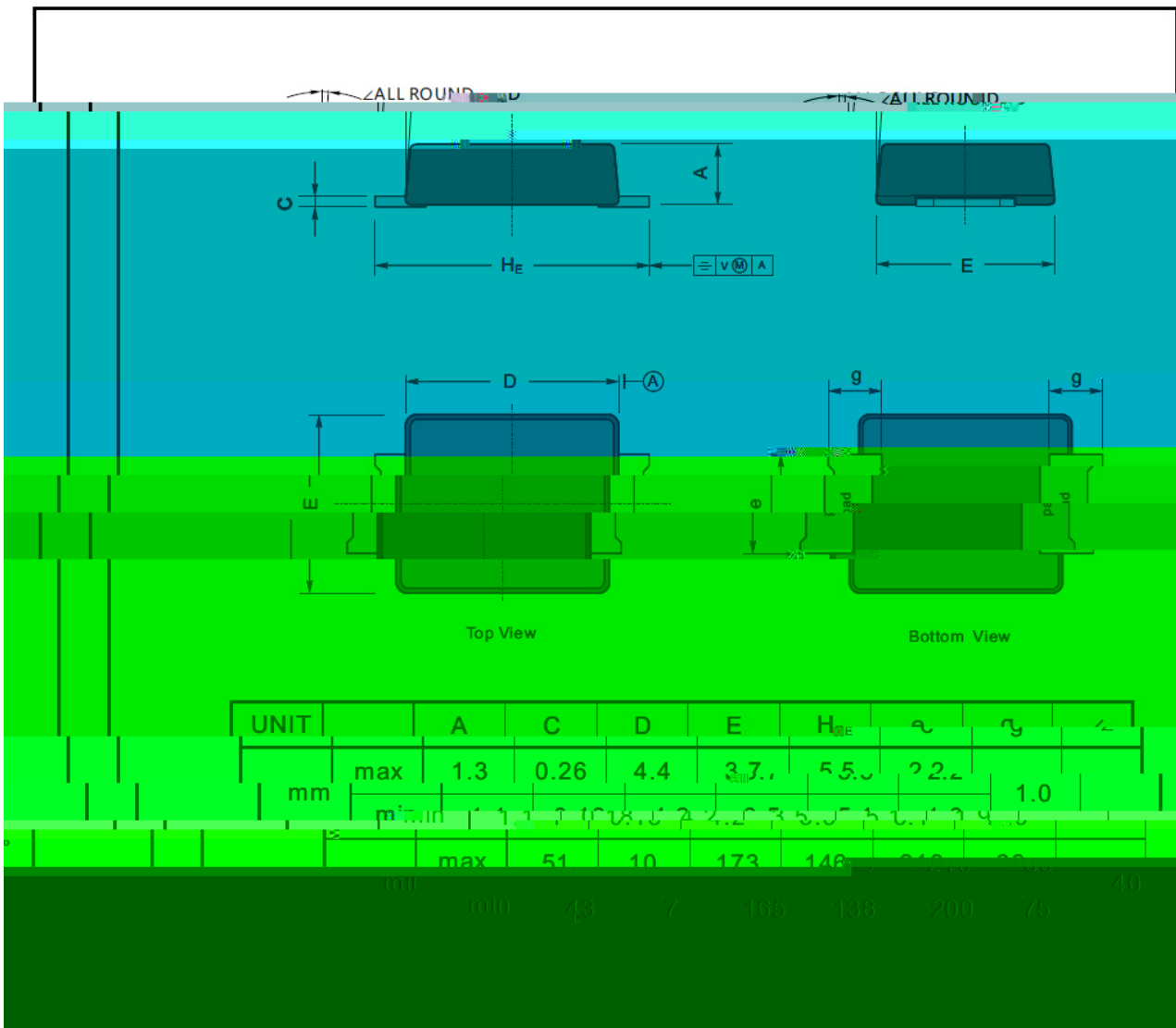


ES1ABF~ES1JBF

Rev.E May.-2019



∅ ≡) ϕ / Package Dimensions

SMRBF

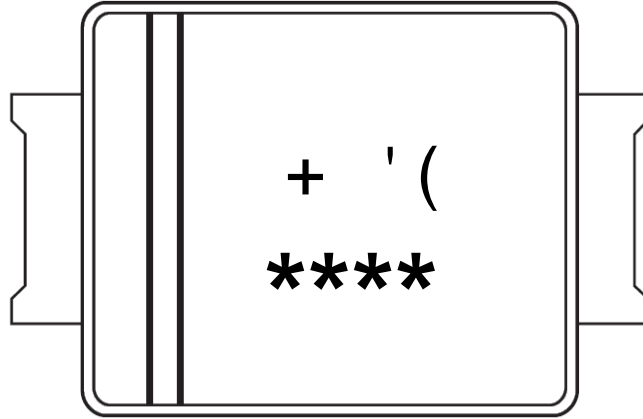


, My f / Marking Instructions

Marking

Type number	Marking code
	
ES1BBF	E1BB
ES1CBF	E1CB
ES1DBF	E1DB
ES1EBF	E1EB
ES1GBF	E1GB
ES1JBF	E1JB

Marking Instructions



Marking

E1AB y ° Z W A

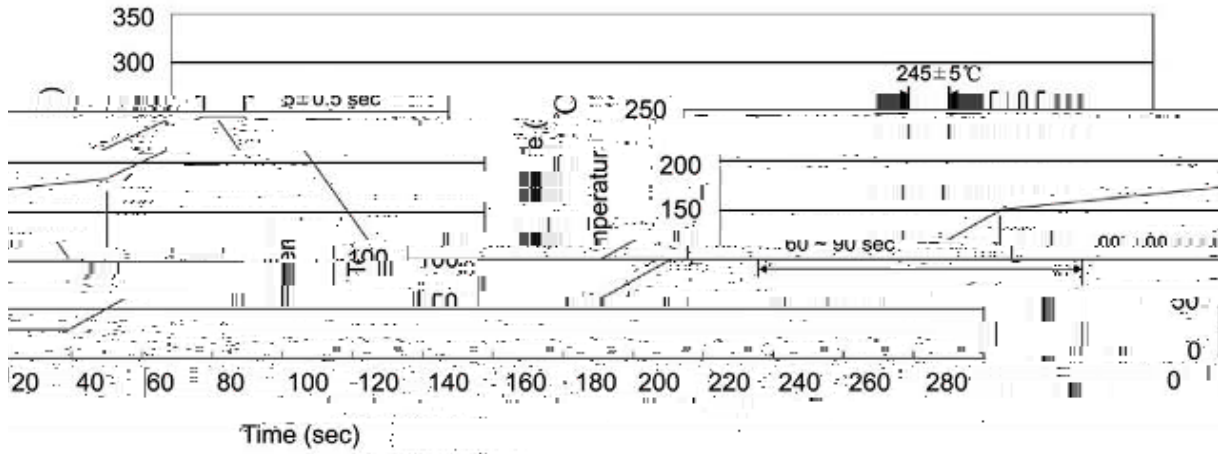
**** y y D Z A Ç A k † 1 * v Ã W A k e μ 3 * ç Ã 4 Z W A

Note:

E1AB y Product Type Code

**** y Lot No. Code kThe 1st * means:YM Code kThe last 3 * means:little Lot No Code

šWD t...•Žϕ (x/) / :KSVKXGZ[XK 6XULORK LUX /8 8KLRU] 9URJKXOTM 6



^a ϕ y

- 1o• Ä ½ " † 150 ½180 - k ž • 60 ½90sec;
- 2o• Q › " † 245 r5 - k ž • 4 Ò 5 r0.5sec;
- 3o•D N ò i Ò 0 , † 2 ½10 - /sec.

Note:

- 1.Preheating:150~180 - , Time:60~90sec.
- 2.Peak Temp.:245 r5 - , Duration:5 r0.5sec.
- 3.