

/ Descriptions

50V ~ 600V 1.0A SOD-123FL
Surface Mount Superfast Recovery Rectifiers, Reverse Voltage 50 to 600V, Forward Current 1.0A, SOD-123FL thin package.

/ Features

RoHS 2011/65/EU
Superfast recovery times for high efficiency, Lead free in comply with EU RoHS 2011/65/EU directives, For surface mounted applications. Halogen free product.

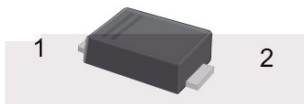
/ Applications

General purpose.

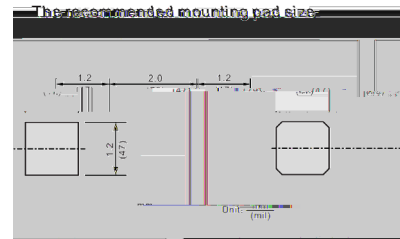
/ Equivalent Circuit



/ Pinning



PIN	DESCRIPTION
1	Cathode
2	Anode

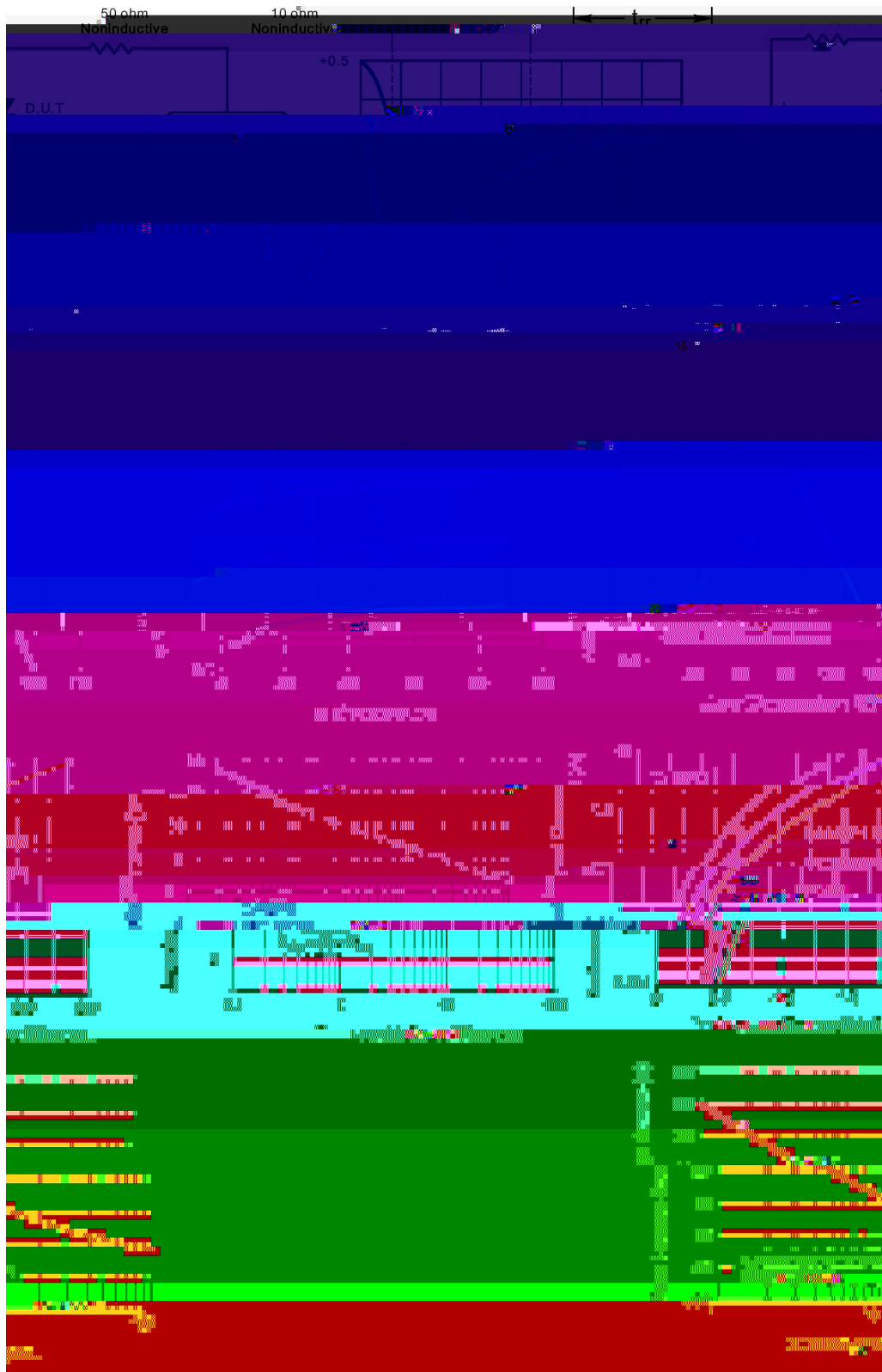


/ Marking

See Marking Instructions.

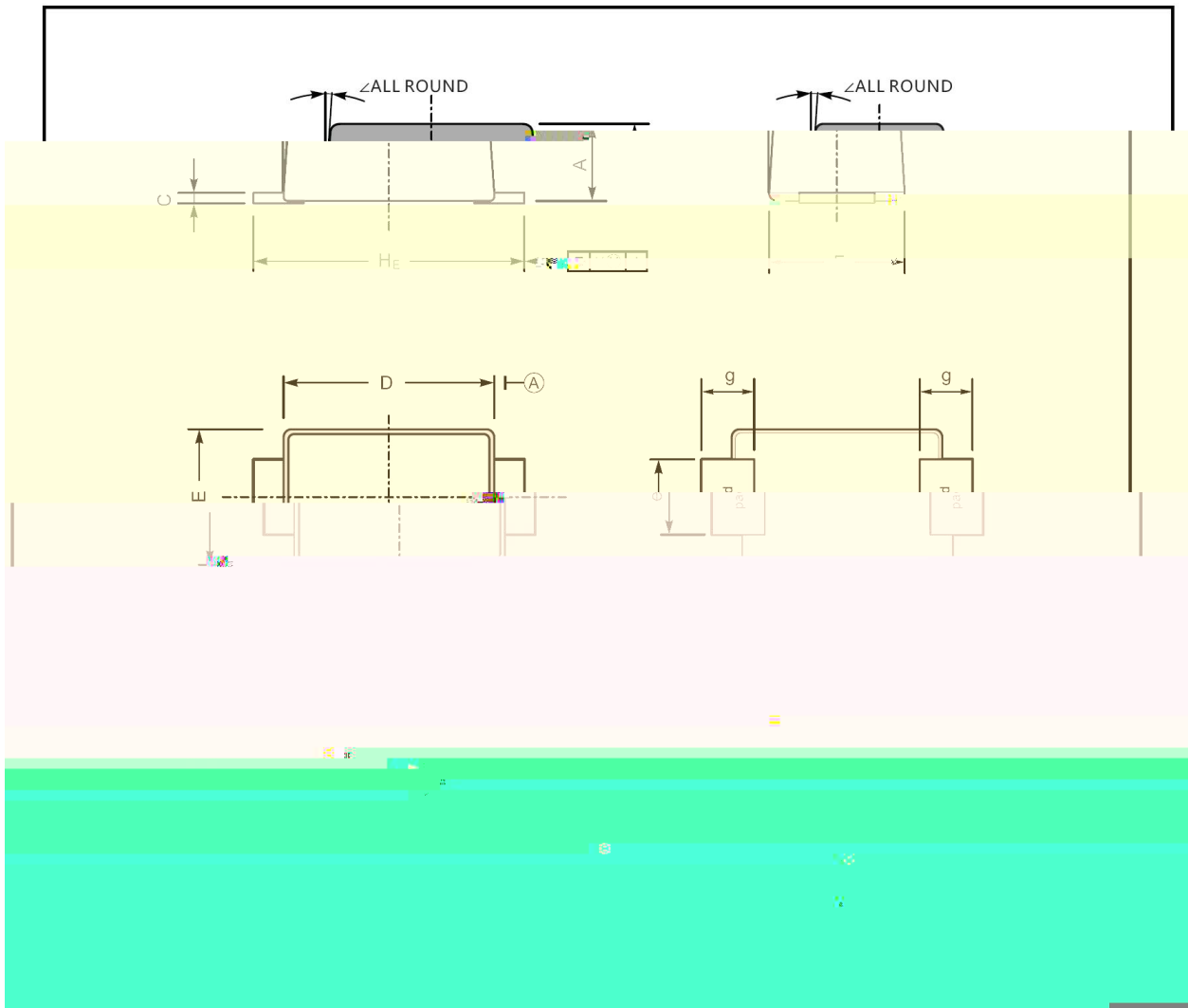
Parameter	Symbol	Rating						Unit
		ES1AW	ES1BW	ES1CW	ES1DW	ES1EW	ES1GW	
Maximum Repetitive								

/ Electrical Characteristic Curve



/ Package Dimensions

SOD-123FL



/ Marking Instructions

Marking

Type number	Marking code
ES1AW	ESL
ES1BW	
ES1CW	
ES1DW	
ES1EW	ESM
ES1GW	
ES1JW	ESH

/ Marking Instructions



ESL

1 *

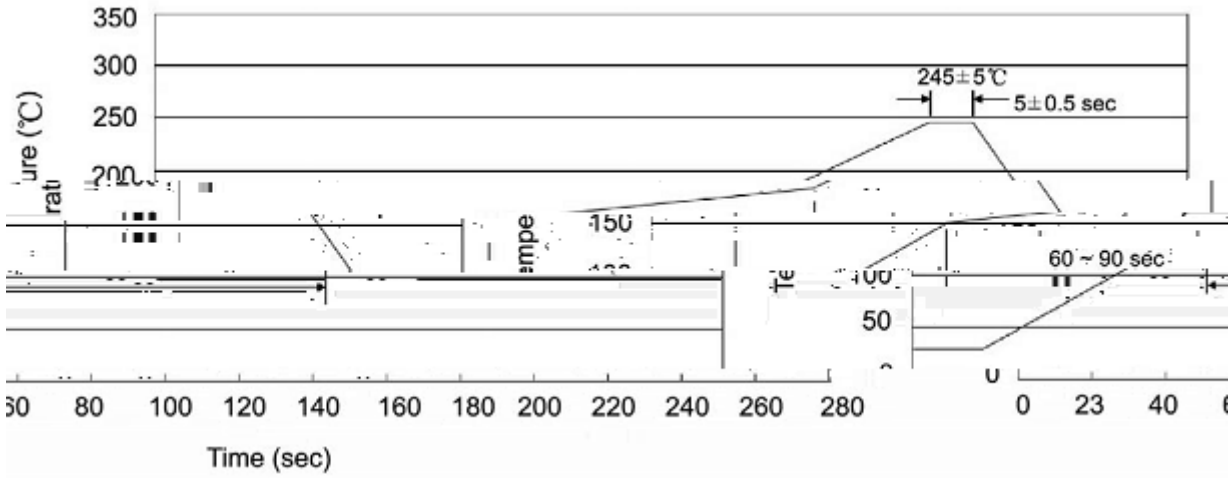
3 *

Note:

ESL Product Type Code

**** Lot No. Code The 1st * means:YM Code The last 3 * means:little Lot No Code

() / Temperature Profile for IR Reflow Soldering(Pb-Free)



Note:

- | | | | | | |
|---|-------|-----|-------|--------|---|
| 1 | 25 | 150 | 60 | 90sec; | 1.Preheating:25~150 , Time:60~90sec. |
| 2 | 245±5 | | 5±0.5 | sec; | 2.Peak Temp.:245±5 , Duration:5±0.5sec. |
| 3 | | 2 | 10 | /sec. | 3. Cooling Speed: 2~10 /sec. |