

/ Descriptions

50V ~ 600V 2.0A SOD-123FL
Surface Mount Superfast Recovery Rectifiers, Reverse Voltage 50 to 600V, Forward Current 2.0A, SOD-123FL thin package.

/ Features

RoHS 2011/65/EU
Superfast recovery times for high efficiency, Lead free in comply with EU RoHS 2011/65/EU directives, For surface mounted applications. Halogen free product.

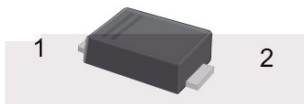
/ Applications

General purpose.

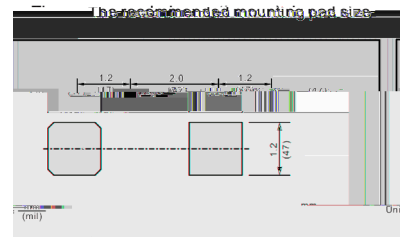
/ Equivalent Circuit



/ Pinning



PIN	DESCRIPTION
1	Cathode
2	Anode



/ Marking

See Marking Instructions.

Parameter	Symbol	Rating							Unit
		ES2AW	ES2BW	ES2CW	ES2DW	ES2EW	ES2GW	ES2JW	
Maximum Repetitive Peak Reverse Voltage	V_{RRM}	50	100	150	200	300	400	600	V
Maximum RMS voltage	V_{RMS}	35	70	105	140	210	280	420	V

/ **Electrical Characteristic Curve**

/ Marking Instructions

Marking

Type number	Marking code
ES2AW	
ES2BW	
E2L	
E2M	
E2H	
ES2CW	
ES2DW	
ES2EW	
ES2GW	
ES2JW	

/ Marking Instructions



E2L

1 *

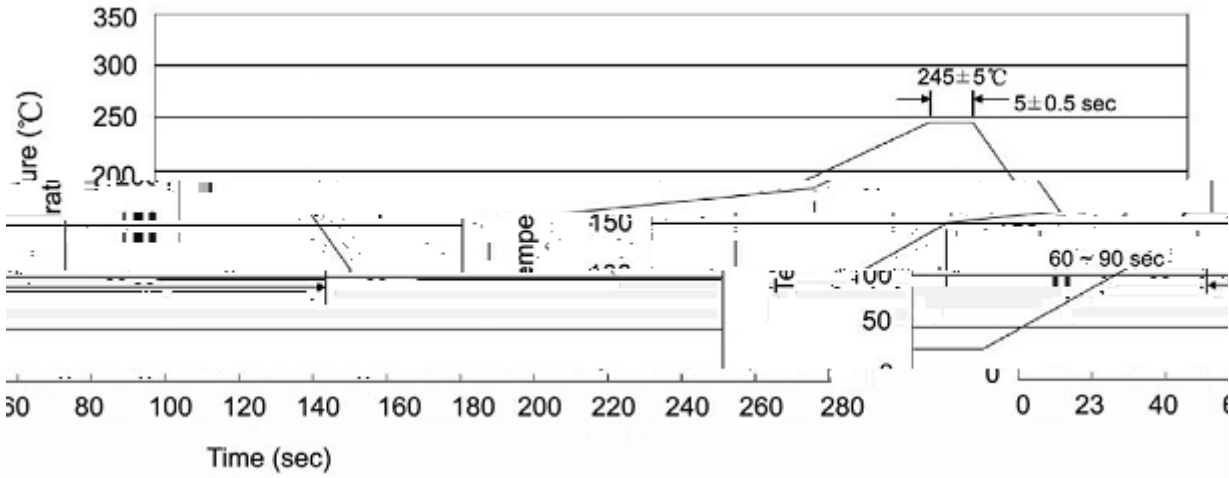
3 *

Note:

E2L Product Type Code

**** Lot No. Code The 1st * means:YM Code The last 3 * means:little Lot No Code

() / Temperature Profile for IR Reflow Soldering (Pb-Free)



Note:

- | | | | | | |
|---|-------|-----|-------|--------|--|
| 1 | 25 | 150 | 60 | 90sec; | 1. Preheating: 25~150 , Time: 60~90sec. |
| 2 | 245±5 | | 5±0.5 | sec; | 2. Peak Temp.: 245±5 , Duration: 5±0.5sec. |
| 3 | | 2 | 10 | /sec. | 3. Cooling Speed: 2~10 /sec. |

/ Resistance to Soldering Heat Test Conditions

260±5 10±1 sec. Temp.: 260±5 Time: 10±1 sec

/ Packaging SPEC.

/ REEL

Package Type 封装形式	Units 包装数量					Dimension 包装尺寸 (unit: mm ³)		
	Units/Reel 只/卷盘	Reels/Inner Box 卷盘/盒	Units/Inner Box 只/盒	Inner Boxes/Outer Box 盒/箱	Units/Outer Box 只/箱	Reel	Inner Box 盒	Outer Box 箱
SOD-123FL	3000	8	24000	5	120000	7 x11	185X180X105	390X385X205

/ Notices