

**/ Descriptions**

TO-92LM          NPN          Silicon NPN transistor in a TO-92LM Plastic Package.

**/ Features**

KTA1273  
Complementary pair with KTA1273.

**/ Applications**

High current application.

**/ Equivalent Circuit**



**/ Pinning**



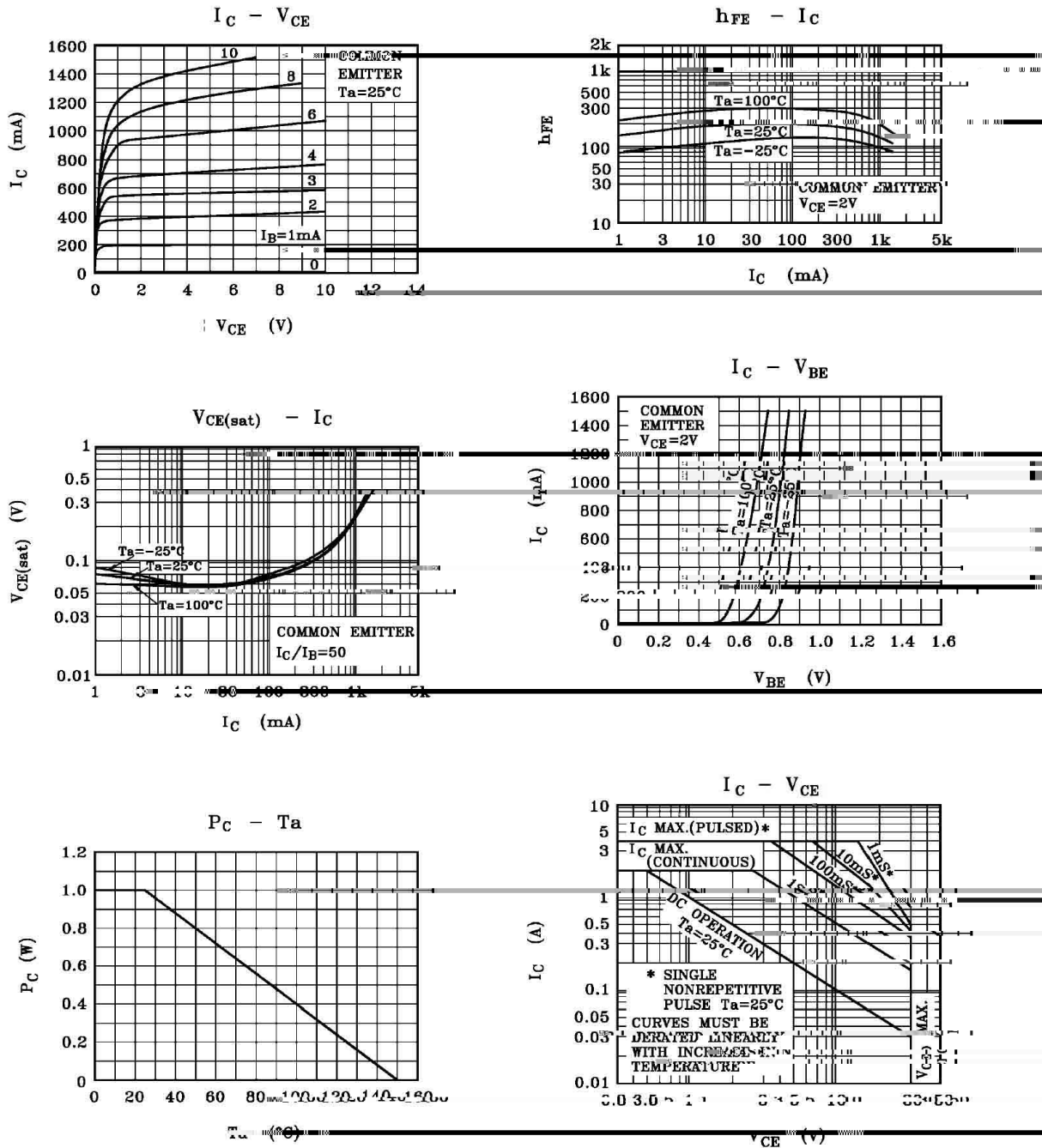
PIN1 Base          PIN 2 Collector          PIN 3 Emitter

**/  $h_{FE}$  Classifications & Marking**

$h_{FE}$ Classifications Symbol	O	Y
$h_{FE}$ Range	100~200	160~320



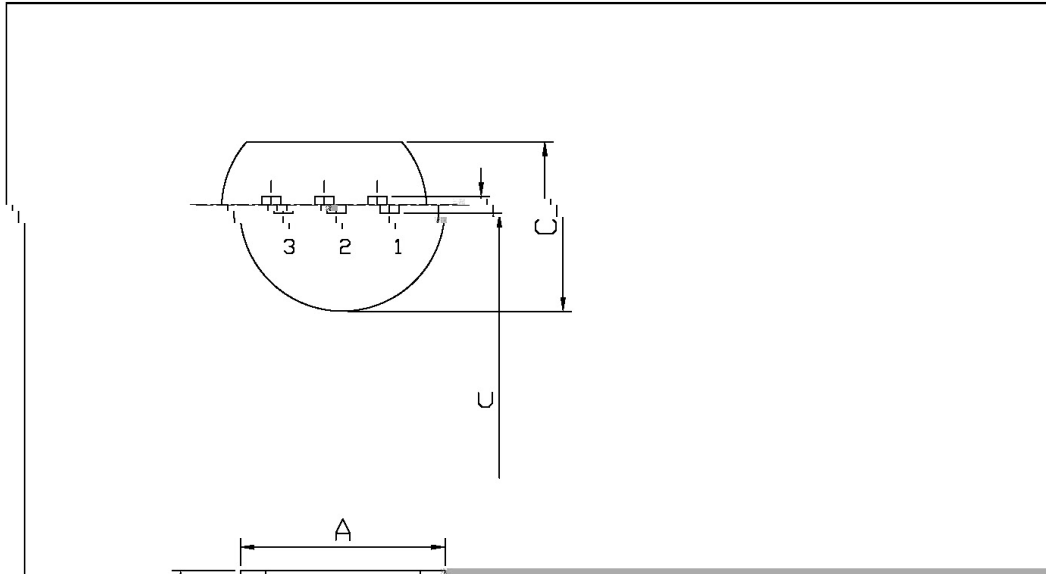
/ Electrical Characteristic Curve



/ Package Dimensions

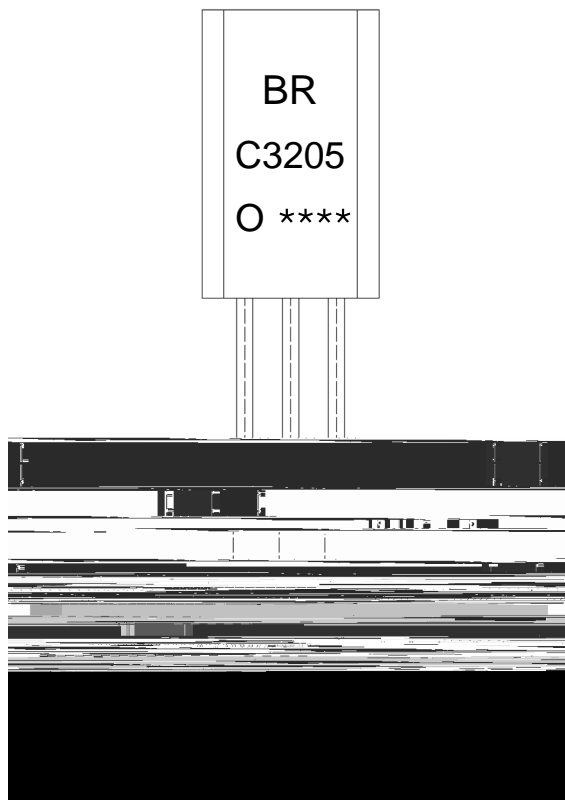
TO-92LM

Unit: mm



Symbol	Dimensions In Millimeters	
	Min	Max
A	1.47	2.51
C	1.27	1.27
U	2.54	2.54
a	0.25	0.25
E	0.25	0.25
E1	0.25	0.25

/ Marking Instructions



BR:

C3205

O:  $h_{FE}$

\*\*\*\*

Note:

BR: Company Code.

C3205: Product Type.

O:  $h_{FE}$  Classifications Symbol

\*\*\*\*: Lot No. Code,code change with Lot No.

