

LV10150BCT

Rev.F May.-2016

/ Descriptions

TO-263

Schottky Diode in a TO-263 Plastic Package.

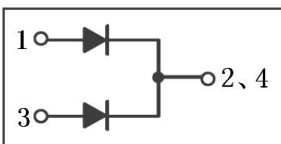
/ Features

Low power loss, high efficiency.

/ Applications

For use in low voltage,high frequency inverters, free wheeling, and polarity protection applications.

/ Equivalent Circuit



/ Pinning



PIN1 Anode

PIN 2 4 Cathode

PIN 3 Anode

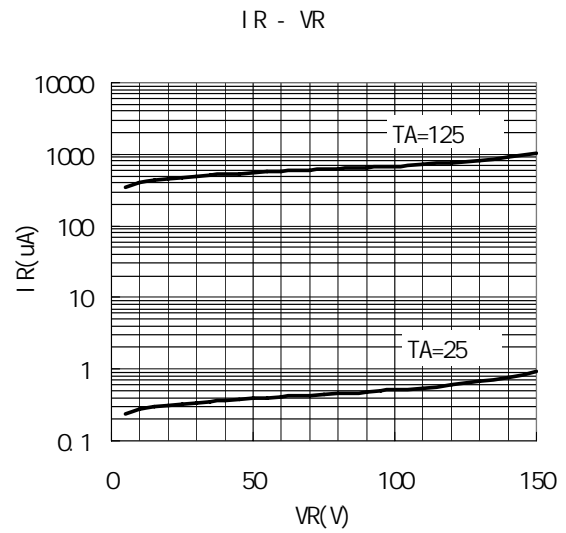
/ h_{FE} Classifications & Marking

See Marking Instructions.

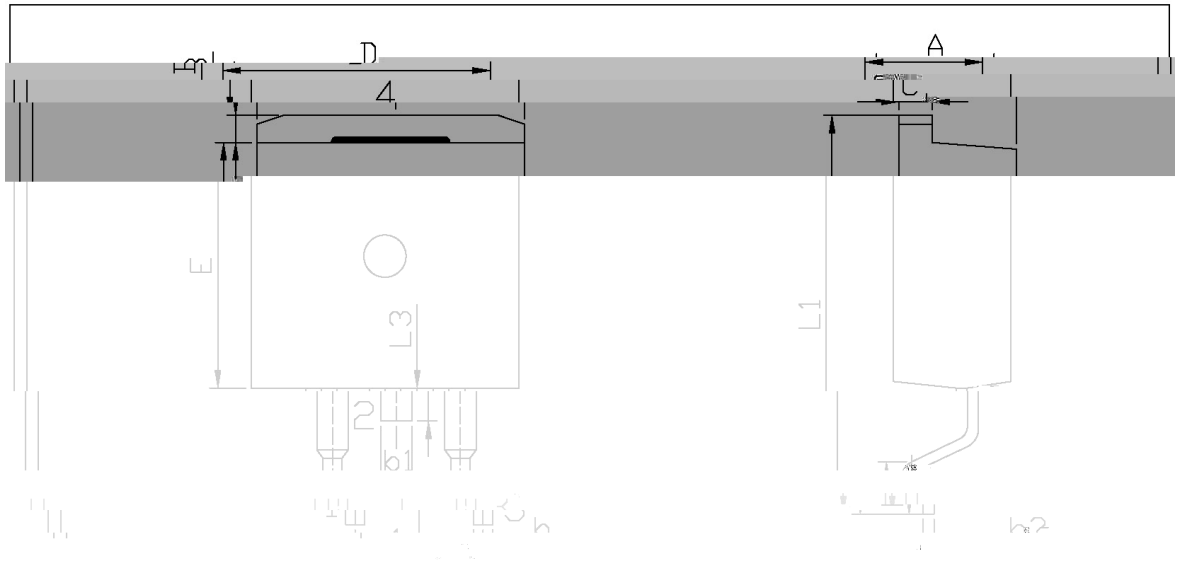
LV10150BCT

Rev.F May.-2016

/ Electrical Characteristic Curve



/ Package Dimensions

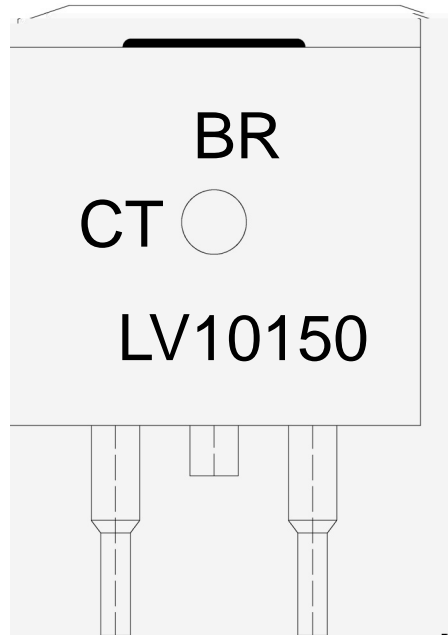


单位: mm

Max	Min	Max	Min
9.40	4.30	4.70	9.00
2.74	1.00	1.40	2.34
5.00	16.00	b1	1.15
2.54	2.54	b2	1.35
1.20	1.60	C	1.20
		D	9.30
			10.20
			L1
			L2
			L3

T0-263

/ Marking Instructions



BR

LV10150

CT:

Note:

BR: Company Code

LV10150 Product Type.

CT: Internal Structure

****: Lot No. Code, code change with Lot No.

LV10150BCT

Rev.F May.-2016

DATA SHEET