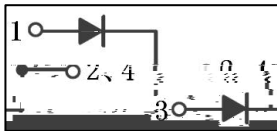


/ Descriptions

/ Features

/ Applications

/ Equivalent Circuit



/ Pinning

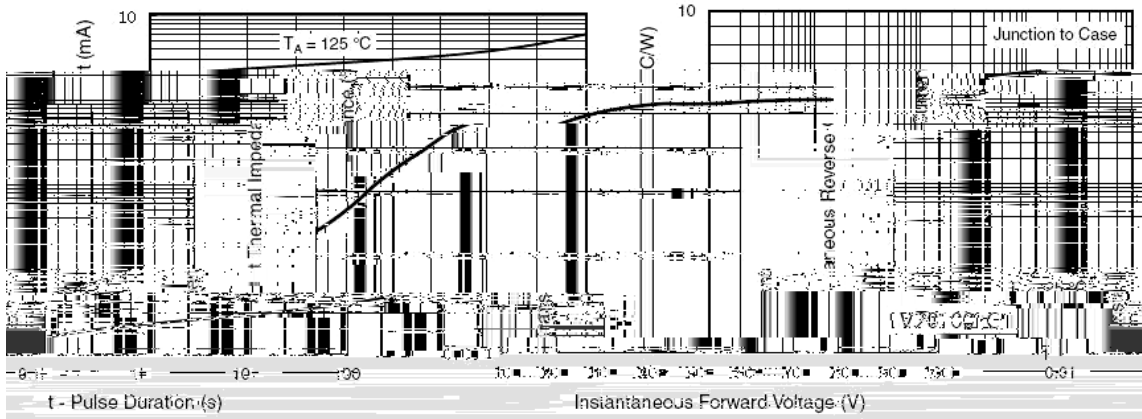
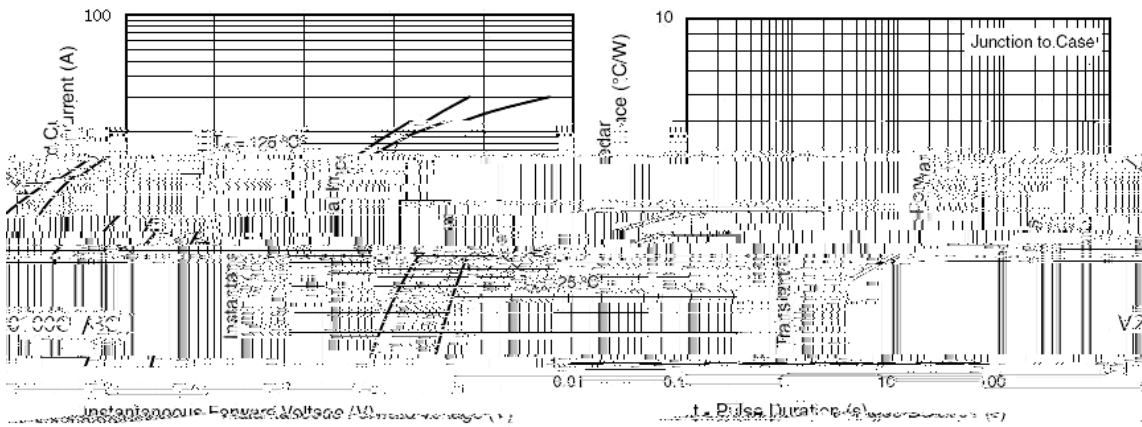


/ h_{FE} Classifications & Marking

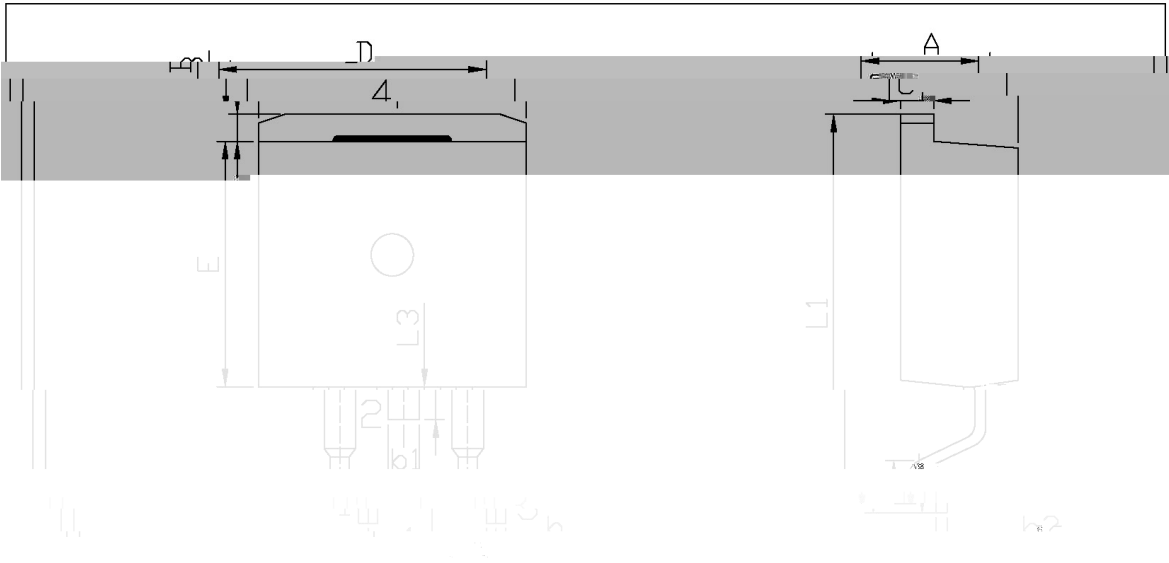
/ Absolute Maximum Ratings(Ta=25)

/ Electrical Characteristics(Ta=25)

/ Electrical Characteristic Curve

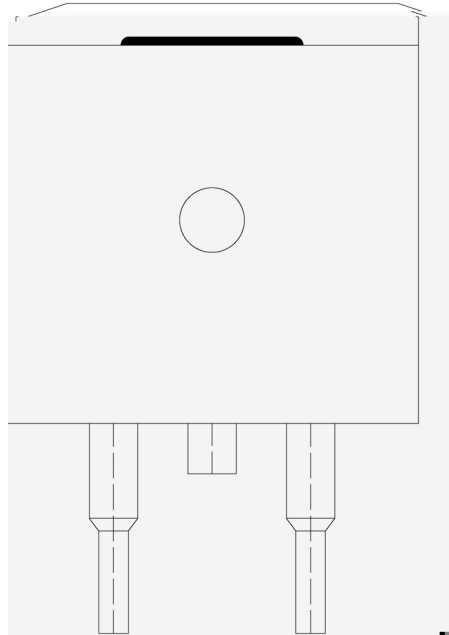


/ Package Dimensions



Symbol	Max	Min	Max	Min
A	4.70	4.30	4.70	4.00
B	2.74	1.00	1.40	2.34
b1	1.35	1.15	1.35	1.15

/ Marking Instructions



() / Temperature Profile for IR Reflow Soldering(Pb-Free)

