

Rev.F Mar.-2016

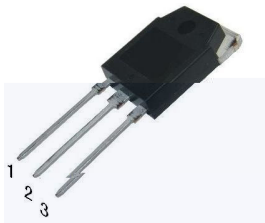
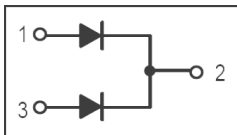
TO-3P

Schottky Barrier Diode in a TO-3P Plastic Package.

Low forward voltage drop, low power losses, High efficiency operation.

OR-ing DC-DC

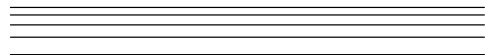
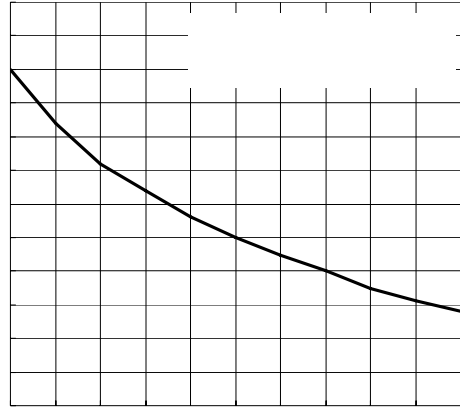
For use in high frequency inverters, switching power supplies, freewheeling diodes, OR-ing diode, dc-to-dc converters and reverse battery protection.

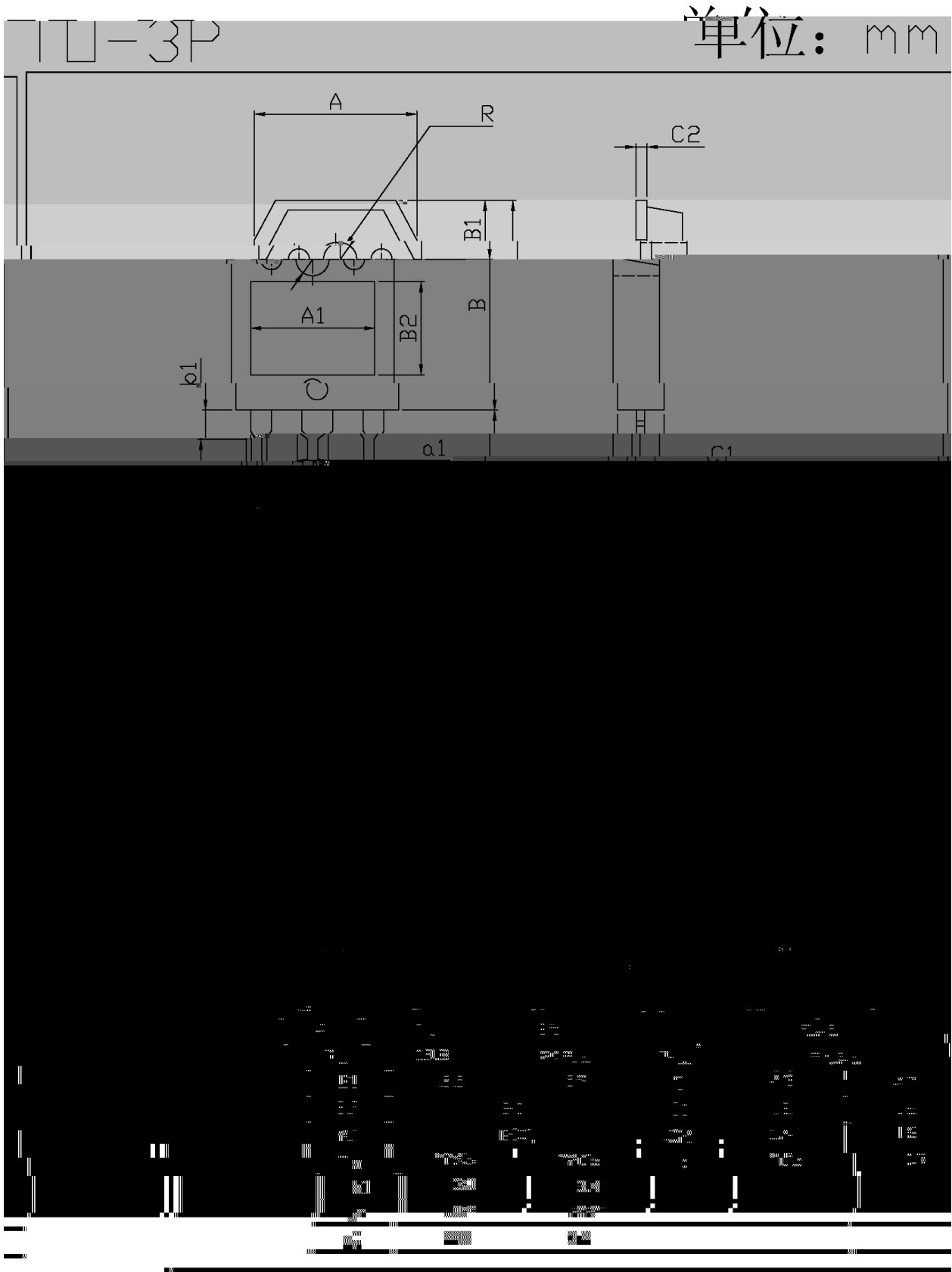


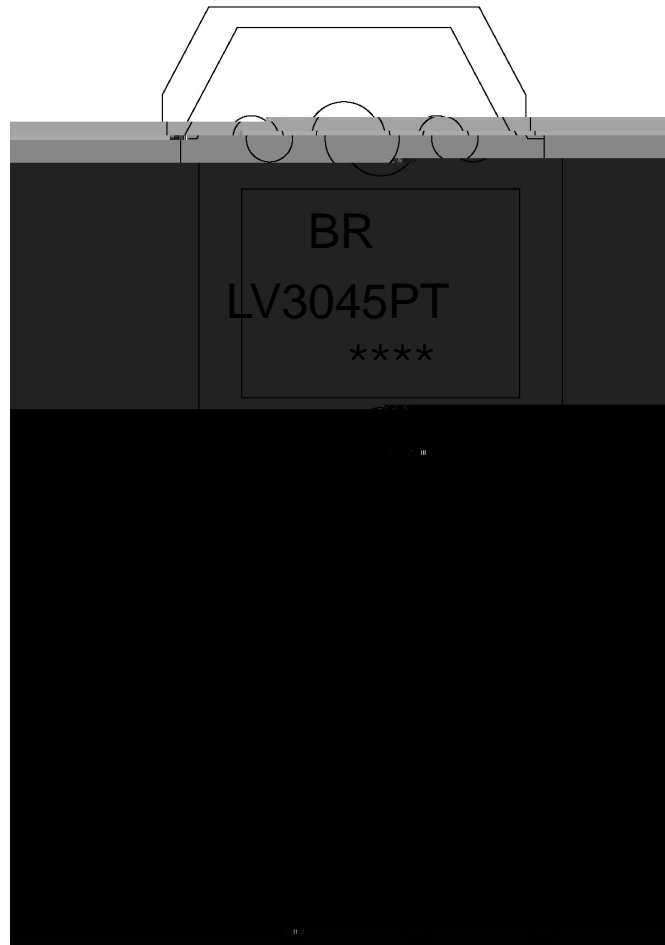
PIN1 Anode PIN 2 Cathode PIN 3 Anode

See Marking Instructions.

Parameter	Symbol	Rating	Unit
Repetitive peak reverse voltage	$V_{RRM}$	45	V
Average forward current	$I_{F(AV)}$	2×15	A
Non-Repetitive Peak Forward Surge Current	$I_{FSM}$	250	A
Thermal Resistance Junction to Ambient case	$R_{Jc}$	1.5	/W
Junction and Storage Temperature Range	$T_j$ $T_{stg}$	-40 +150	







BR

LV3045PT

\*\*\*\*

Note:

BR: Company Code.

LV3045PT: Product Type.

\*\*\*\*: Lot No. Code, code change with Lot No.

