



					内 容
D	2017-5				
E	2020-11-28	7	5 30000 装 7 42000 装 13" x15 13" x12		

MB1S~MB10S

Rev.E Nov.-2020



DATA SHEET

/ fi / Descriptions

0.8A MBS
0.8A Surface Mount Glass Passivated Bridge Rectifier, MBS package.

fl Ł / Features

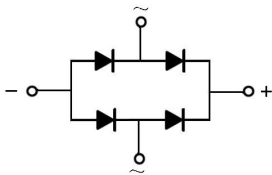
100V~1000V 0.8A

Glass Passivated Chip Junction, Reverse Voltage:100to1000V, Forward Current:0.8 A, High Surge Current Capability, Designed for Surface Mount Application.Halogen free product.

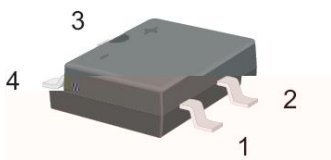
† Ž / Applications

General purpose.

ž ! " # \$ % / Equivalent Circuit



& ' () / Pinning



˘ ˘ ˘ / Marking

See Marking Instructions.

Parameter	Symbol	Rating						Unit
		MB1S	MB2S	MB4S	MB6S	MB8S	MB10S	
Maximum Repetitive Peak Reverse Voltage	V_{RRM}	100	200	400	600	800	1000	V
Maximum RMS voltage	V_{RMS}	70	140	280	420	560	700	V
Maximum DC Blocking Voltage	V_{DC}	100	200	400	600	800	1000	V
Average Rectified Output Current at $T_a = 50^\circ\text{C}$	I_o	0.8						A
Peak Forward Surge Current 8.3 ms Single Half Sine Wave Superimposed on Rated Load (JEDEC Method)	I_{FSM}	30						A
Typical Junction Capacitance ^(Note1)	C_j	13						pF
Typical Thermal Resistance ^(Note2)	R_{JA}	95						$^\circ\text{C}/\text{W}$
Typical Thermal Resistance ^(Note2)	R_{JL}	30						$^\circ\text{C}/\text{W}$
Operating and Storage Temperature Range	T_j, T_{stg}	-55~+150						$^\circ\text{C}$

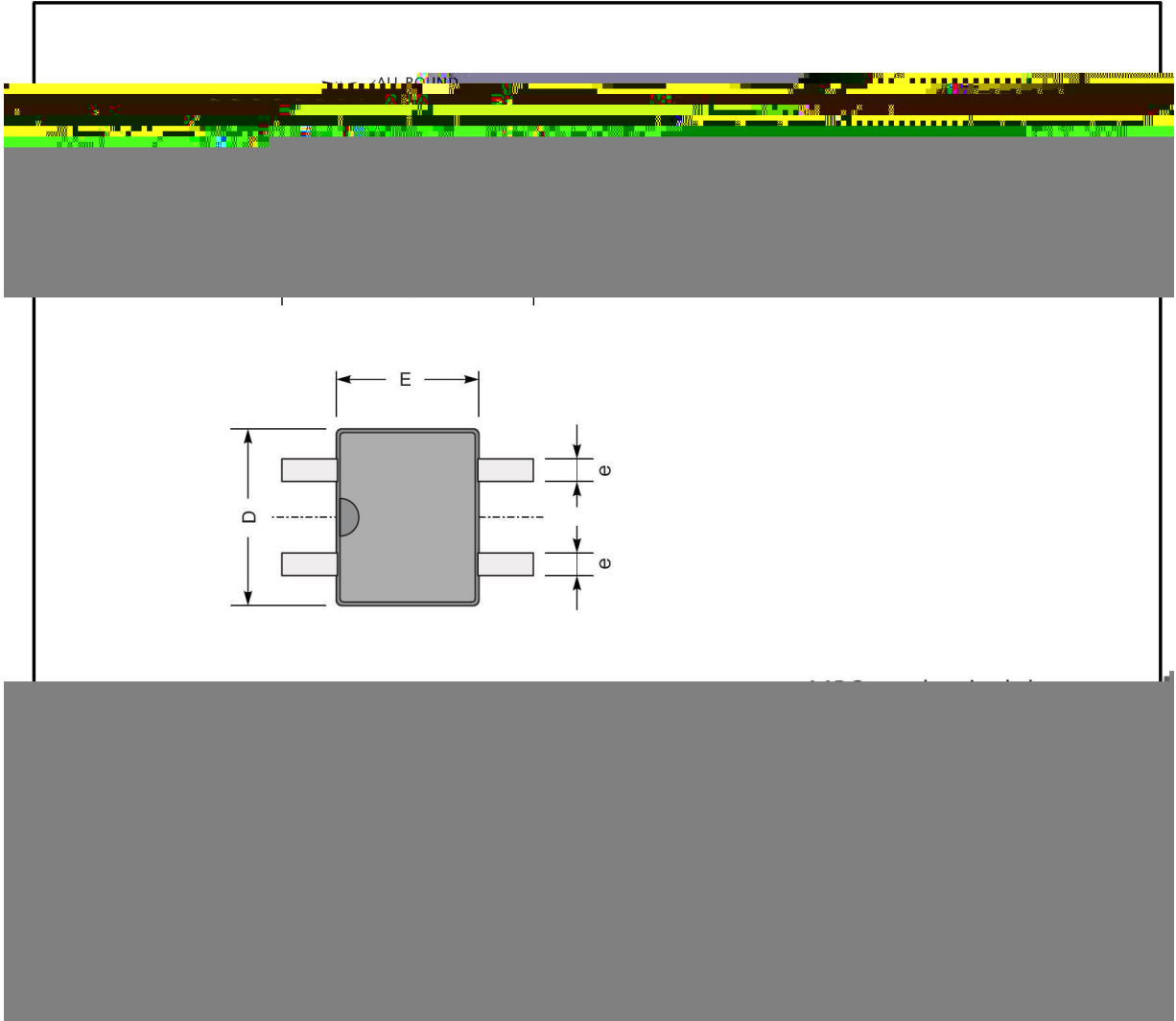
00

MB1S~MB10S

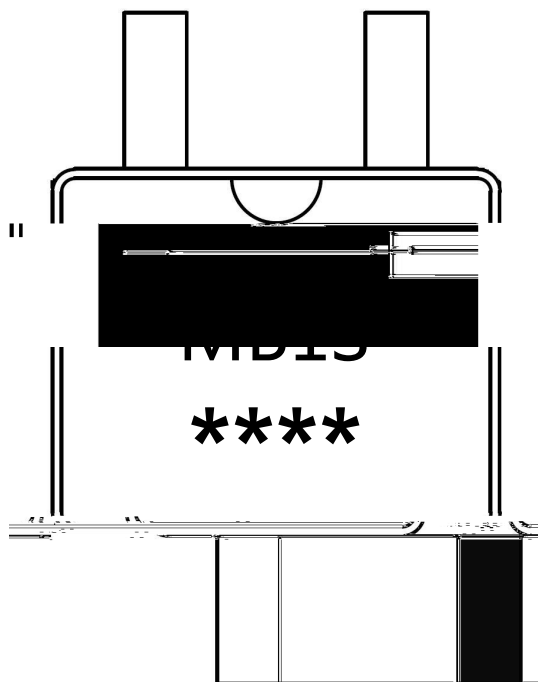
Rev.E

4 5 6 7 3 / Package Dimensions

MBS



89 / Marking Instructions



:

:

Note:

Product Type Code

Lot No. Code The 1st : means:YM Code The last 3 : ;means:little Lot
No Code

MB1S~MB10S

Rev.E Nov.-2020