

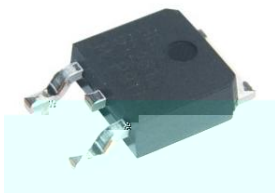
Rev.E May.-2016

TO-252

Schottky diode in a TO-252 Plastic Package.

High Forward Surge Capability,Ultra Low Forward Voltage Drop, Excellent High Temperature Stability.

For Switching power supply, Converters, Free-Wheeling diodes, and Reverse battery protection.



PIN1 Anode

PIN 2,4 Cathode

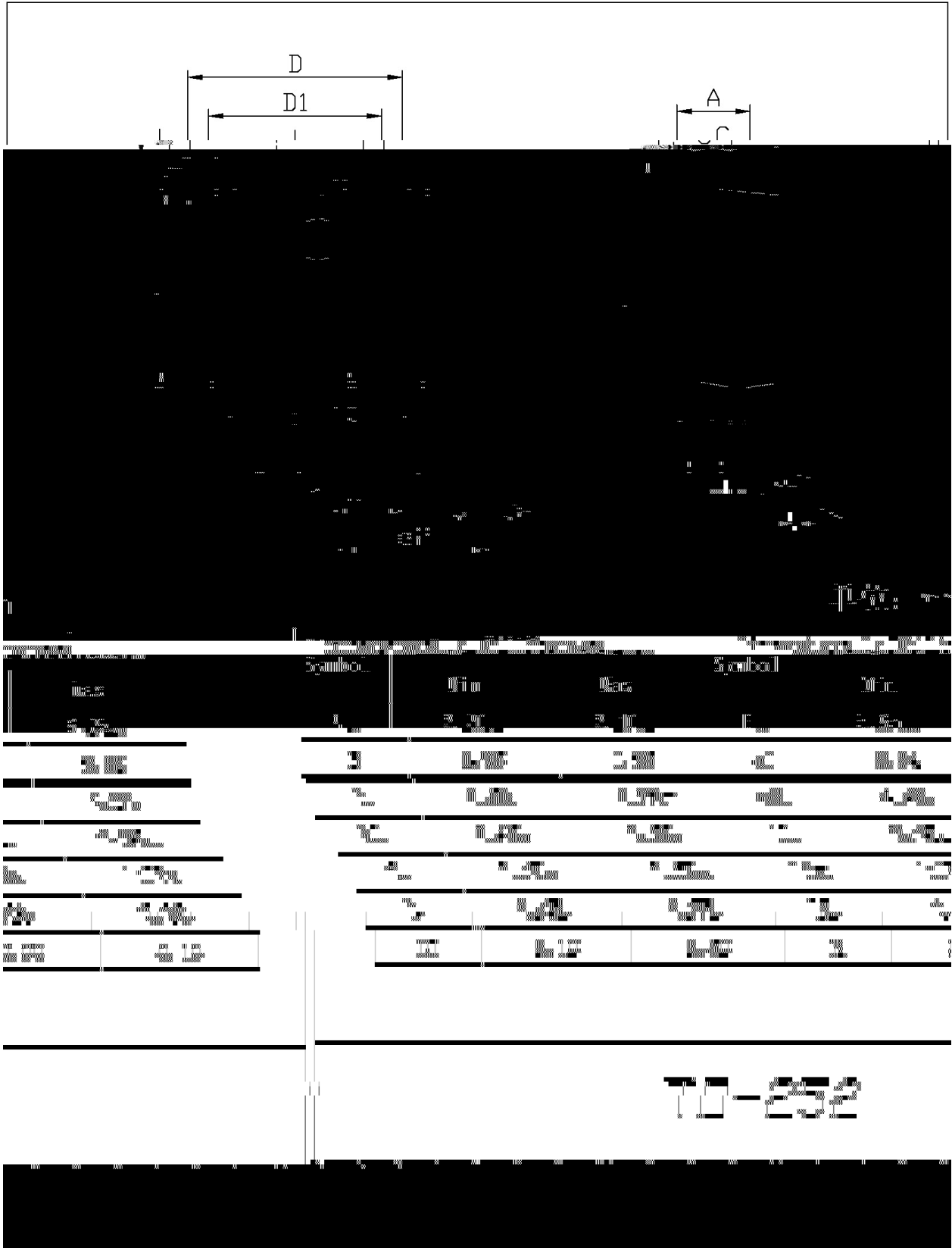
PIN 3 Anode

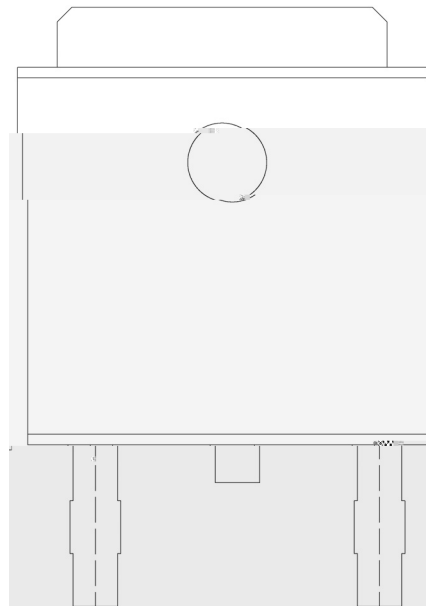
See Marking Instructions.

Parameter	Symbol	Rating	Unit
Peak Repetitive Reverse Voltage	V_{RRM}	100	V
Average Rectified Forward Current 50% duty cycle @ $T_C = 105$	$I_{F(AV)}$	5.0	A
Non Repetitive Peak Surge Current	I_{FSM}	120	A
Junction Temperature Range	T_j	-55 150	
Storage Temperature Range	T_{stg}	-55 150	
Typical Thermal Resistance Junction to Ambient	R_{JA}	25	/W

Parameter	Symbol	Test Conditions	Min	Typ	Max	Unit
Forward Voltage	V_F	$I_F=5A$ $T_J=25$			0.85	V
		$I_F=5A$ $T_J=125$			0.70	V
Instantaneous Reverse Current	I_R	$V_R=100V$ $T_J=25$			1.0	mA
		$V_R=100V$ $T_J=125$			10	mA

*Pulse Width < 300 μ s, Duty Cycle <2%



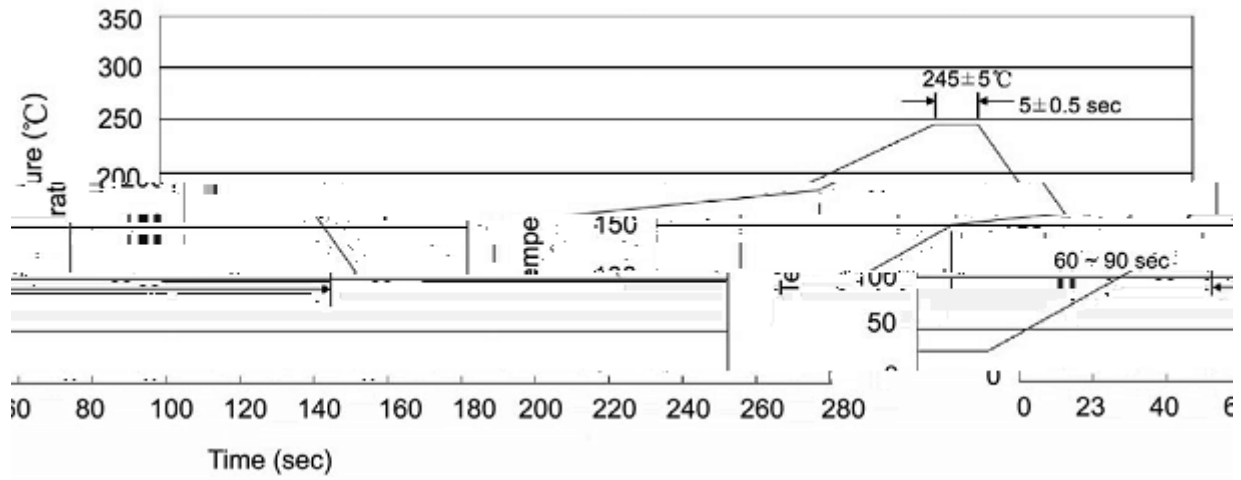


BR
5100

Note:

BR:
5100

Company Code


Note:

- | | | | | | |
|---|-------|-----|----|-----------|---|
| 1 | 25 | 150 | 60 | 90sec; | 1.Preheating:25~150 , Time:60~90sec. |
| 2 | 245±5 | | | 5±0.5sec; | 2.Peak Temp.:245±5 , Duration:5±0.5sec. |
| 3 | | | 2 | 10 /sec. | 3. |