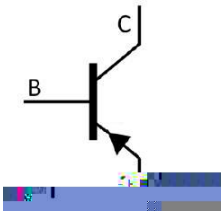


/ Descriptions

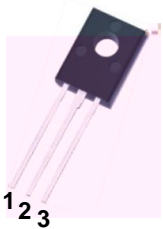
/ Features

/ Applications

/ Equivalent Circuit

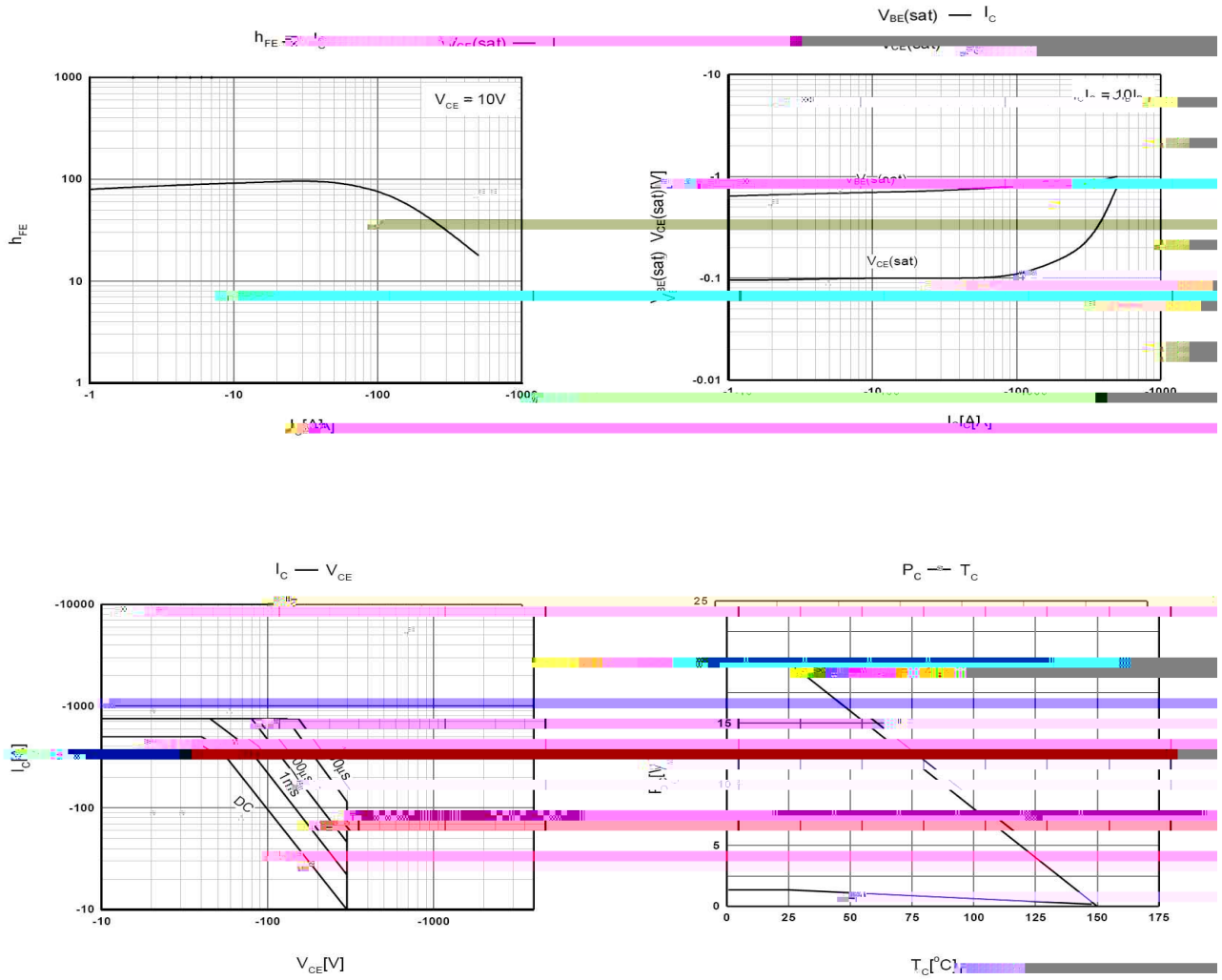


/ Pinning



/ h_{FE} Classifications & Marking

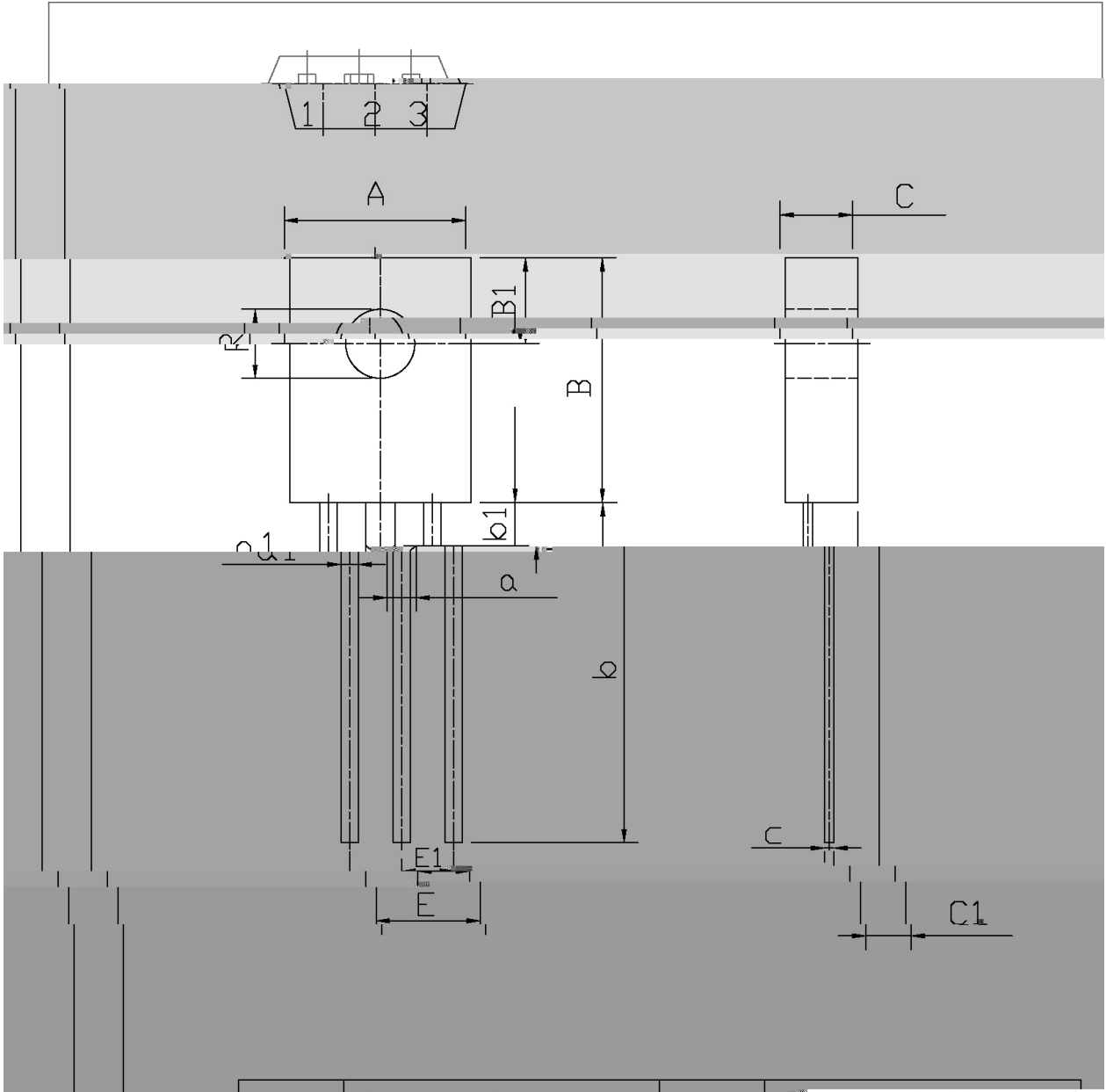
/ Electrical Characteristic Curve



/ Package Dimensions

TU-126F

单位: mm

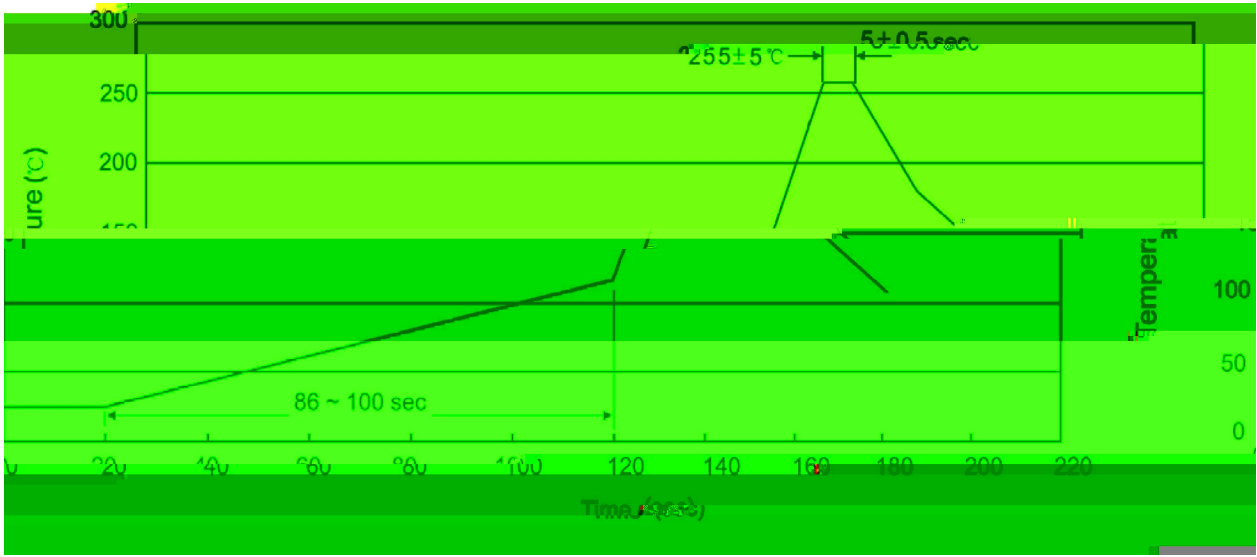


4.8		D	10.8	11.2	E	4.4
3.3		B1	3.8	4.2	C	3.1
2.1		R	2.95	3.15	C1	1.9
0.6		b	14	16	c	0.3
7		b1		1.9	a	1.2
		E1	2.1	2.5		

/ Marking Instructions



() / Temperature Profile for Dip Soldering(Pb-Free)



/ Resistance to Soldering Heat Test Conditions

/ Packaging SPEC.

封装形式	包装数量					包装尺寸 :		
	只 套管	套管 盒	只 盒	盒 箱	只 箱	套管	盒	箱

封装形式	包装数量					包装尺寸 :		
	只 套管	套管 盒	只 盒	盒 箱	只 箱	套管	盒	箱

/ Notices