

**/ Descriptions**

TO-251          NPN          Silicon NPN transistor in a TO-251 Plastic Package.

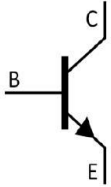
**/ Features**

High voltage, Low saturation voltage, low collector capacitance output, complementary pair with MPSA92I.

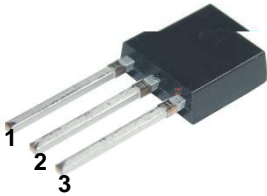
**/ Applications**

High voltage control circuit.

**/ Equivalent Circuit**



**/ Pinning**



PIN1 Base          PIN 2 Collector          PIN 3 Emitter

**/ h<sub>FE</sub> Classifications & Marking**

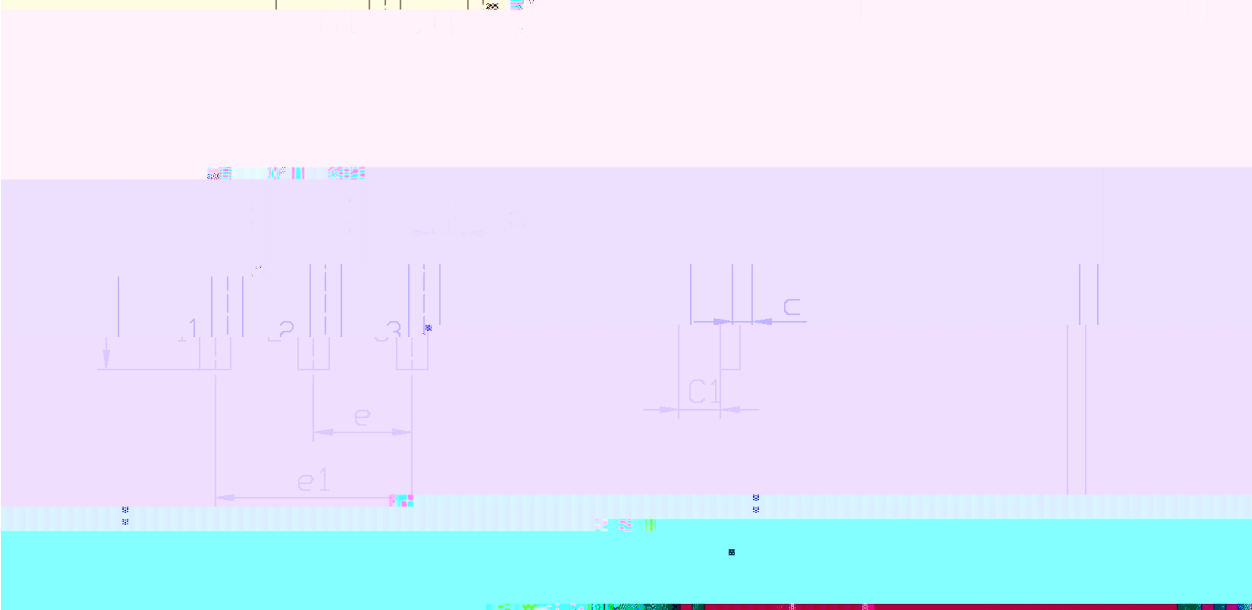
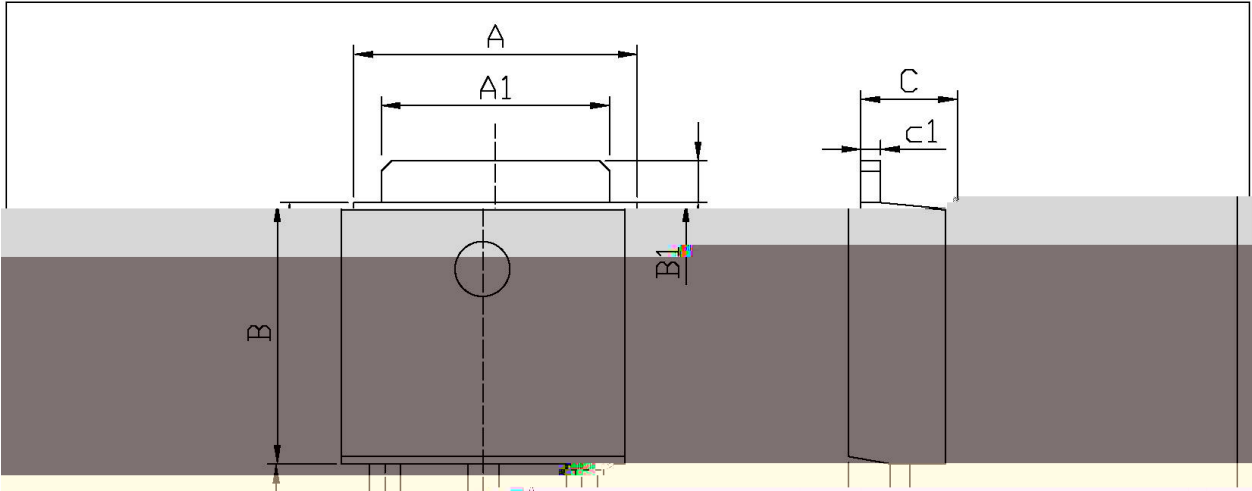
See Marking Instructions.

Parameter	Symbol	Rating	Unit
Collector to Base Voltage	$V_{CBO}$	300	V
Collector to Emitter Voltage	$V_{CEO}$	300	V
Emitter to Base Voltage	$V_{EBO}$	6.0	V
Collector Current - Continuous	I		

# MPSA42I

MPS3(Rev)7Tw9(.)-4(D)-10.9(A)95.8T-4(1(A) Tm5( S)-6(H)Tm5(EET)TJ98060 13.9862.94 78062.9527.6-0.0018Tc0.2042I )Tj/T9 0

/ Package Dimensions



Symbol	Dimensions in millimeters		Symbol	Min	Max
	Min	Max			
a	0.50	0.75	A	6.45	6.75

