

SSL56B~SSL510B

Rev. A Feb.-2019

/ Descriptions

Surface Mount Schottky Barrier Rectifiers, Reverse Voltage 60 to 100V, Forward Current: 5.0A, SMB package.

/ Features

Low power loss, High efficiency, High forward surge current capability, For surface mounted applications. HF product.

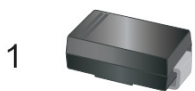
/ Applications

General purpose.

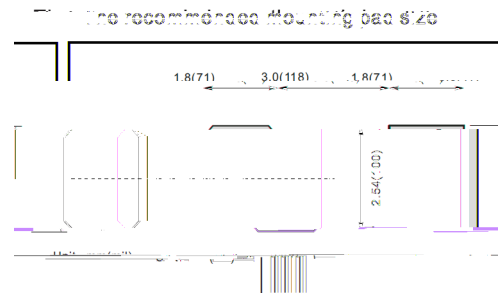
/ Equivalent Circuit



/ Pinning



PIN	DESCRIPTION
1	Cathode
2	Anode



/ Marking

See Marking Instructions.

/ Absolute Maximum Ratings(Ta=25)

Parameter	Symbol	Rating		Unit
		SSL56B	SSL510B	
Maximum Repetitive Peak Reverse Voltage	V_{RRM}	60	100	V
Maximum RMS voltage	V_{RMS}	42	70	V
Maximum DC Blocking Voltage	V_{DC}	60	100	V
Maximum Average Forward Rectified Current	$I_{F AV}$	5.0		A
Peak Forward Surge Current 8.3 ms Single Half Sine Wave Superimposed on Rated Load (JEDEC Method)	I_{FSM}	150		A
Typical Junction Capacitance ¹	C_j	600		pF
Typical Thermal Resistance ²	R_{JA}	45		/W
Operating and Storage Temperature Range	T_j, T_{stg}	-55~+150		

Note:

- 1 Measured at 1 MHz and applied reverse voltage of 4 V D.C
- 2 P.C.B. mounted with 2.0" X 2.0" (5 X 5 cm) copper pad areas.

/ Electrical Characteristics(Ta=25)

Parameter	Symbol	Test Conditions	Rating		Unit
			SSL56B	SSL510B	
Maximum Instantaneous Forward Voltage	V_F	$I_F=5.0A$	0.5	0.6	V
Maximum DC Reverse Current at Rated DC Reverse Voltage	I_R	$T_a=25$	1.0		mA
		$T_a=100$	50		mA

/ Electrical Characteristic Curve

Fig.1 Forward Current Rectifying Curve

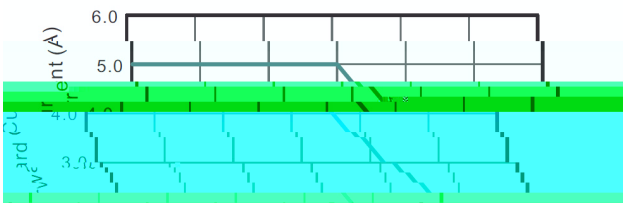
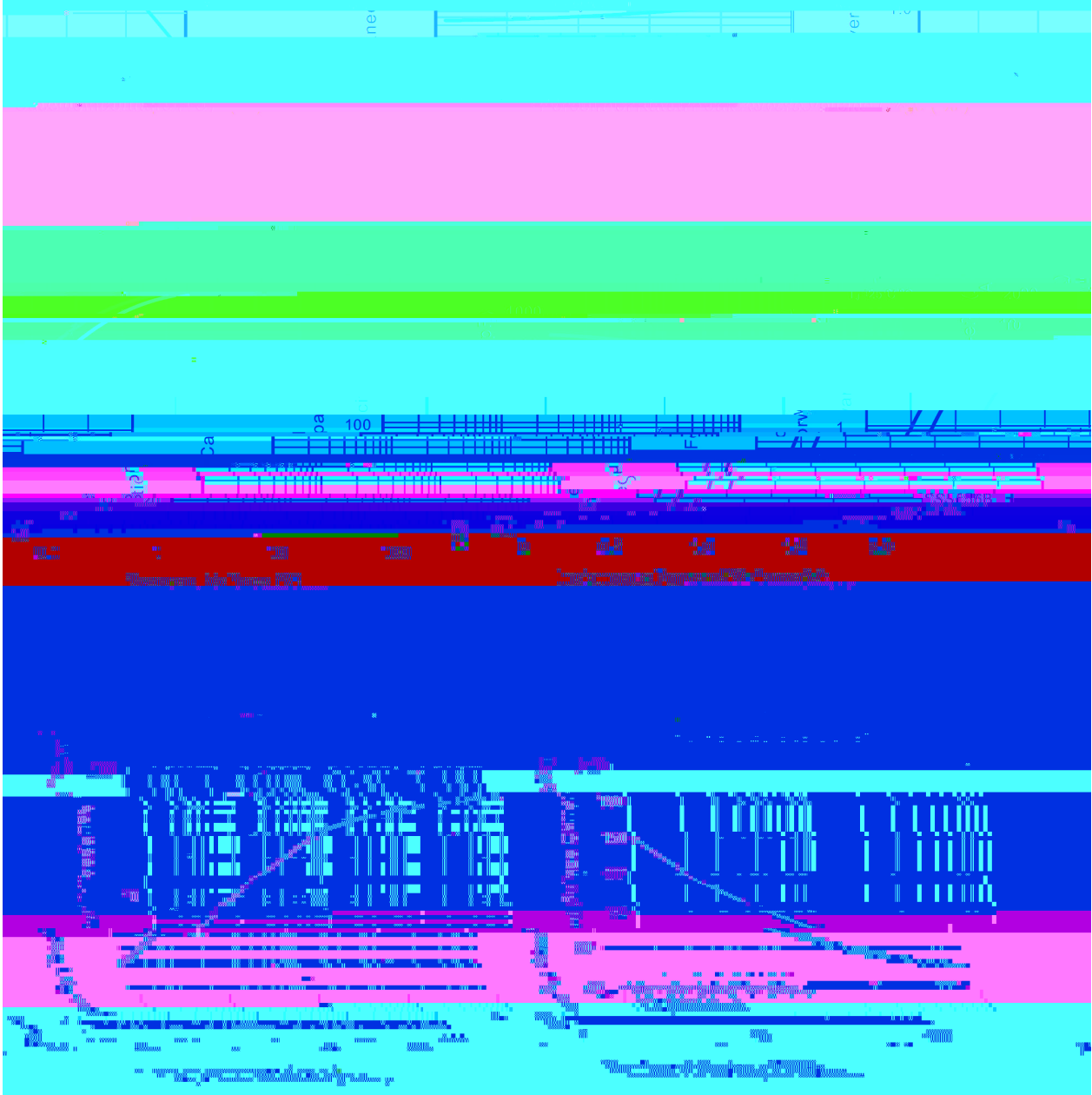
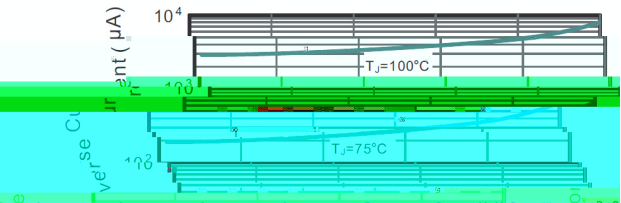
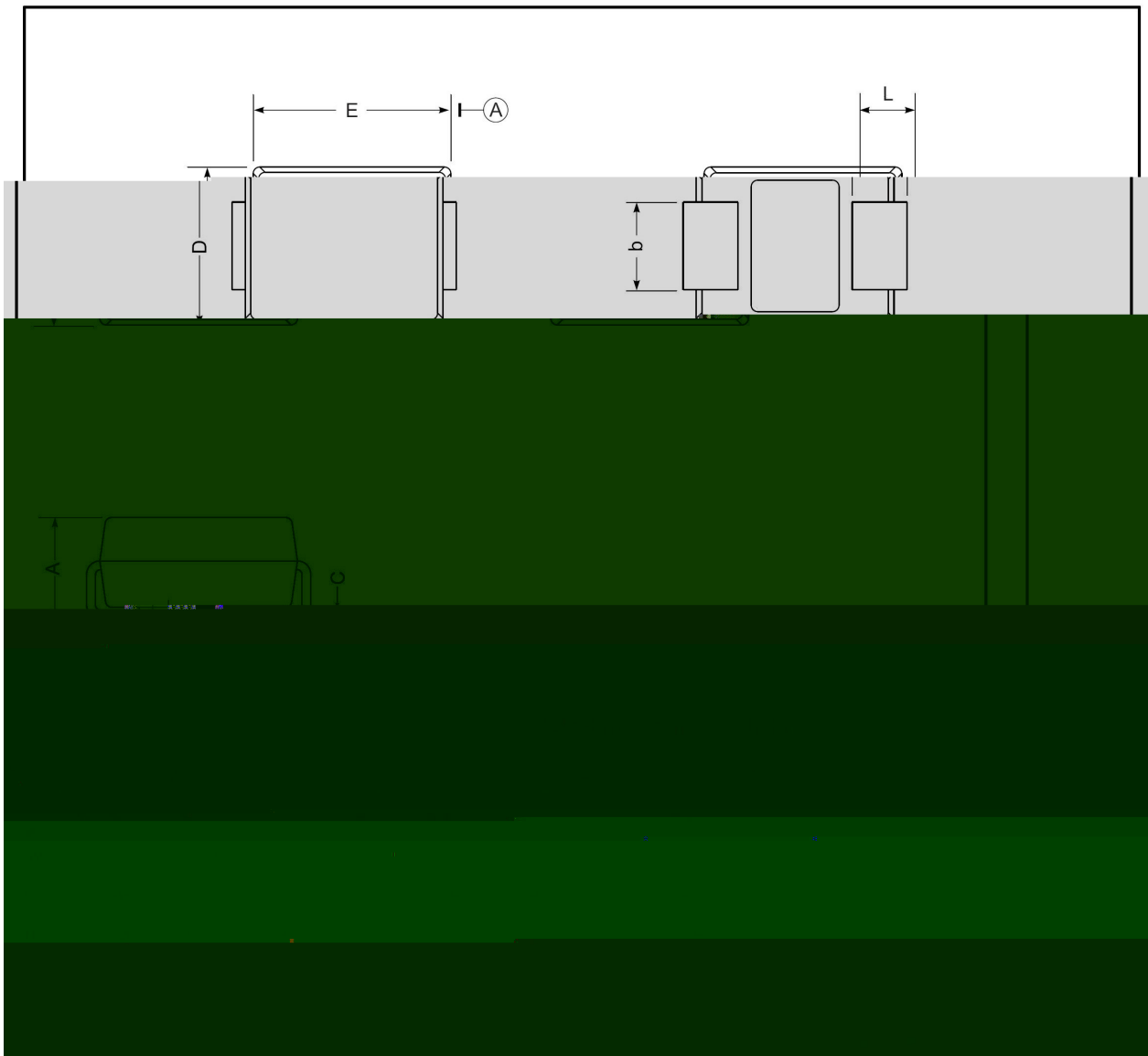


Fig.2 Typical Reverse Characteristics



/ Package Dimensions

SMB

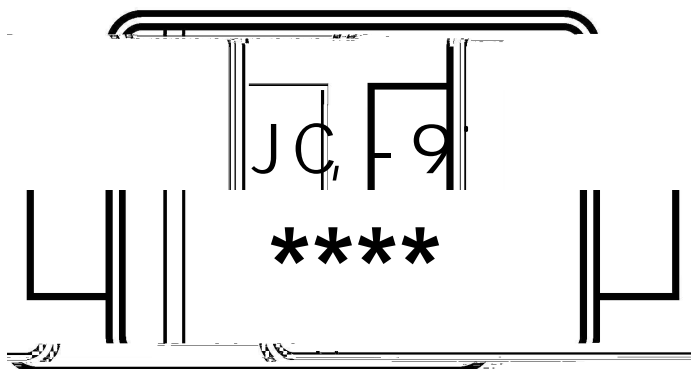


/ Marking Instructions

Marking

Type	Manufacturer	Marking code
	SSL56B	SL56B
	SSL510B	SL510B

/ Marking Instructions



JC, -9

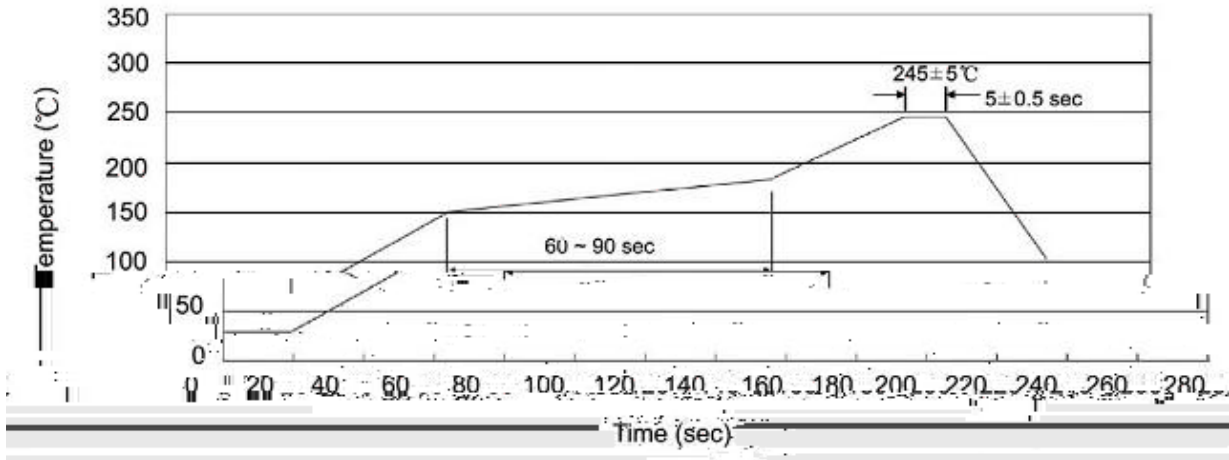
(* * *

Note:

JC, -9 Product Type Code

**** Lot No. Code The 1st * means:YM Code The last 3 * means:little Lot No Code

() / Temperature Profile for IR Reflow Soldering(Pb-Free)



Note:

- | | | | | | |
|---|--------|-----|------------|--------|---|
| 1 | 150 | 180 | 60 | 90sec; | 1.Preheating:150~180 , Time:60~90sec. |
| 2 | 245..5 | | 5..0.5sec; | | 2.Peak Temp.:245..5 , Duration:5..0.5sec. |
| 3 | | 2 | 10 | /sec. | 3. ..5 |