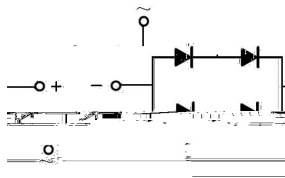


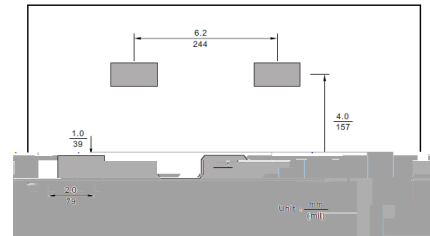
100V ~ 1000V

1.2A



PIN	DESCRIPTION
1	Input Pin (~)
2	Input Pin (~)
3	Output Anode (+)
4	Output Cathode (-)

The recommended mounting pad size



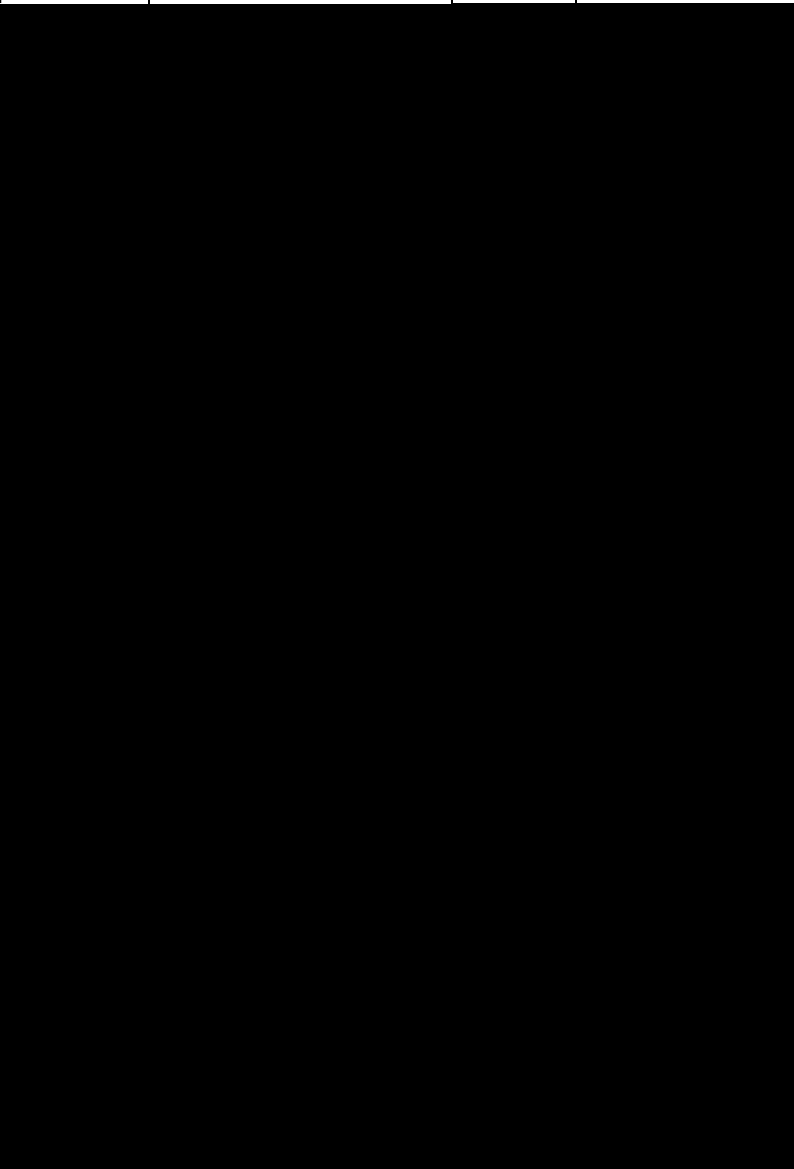


Fig.1 Average Rectified Output Current Derating Curve

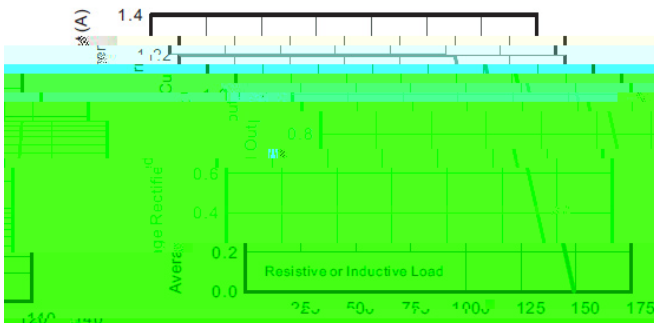
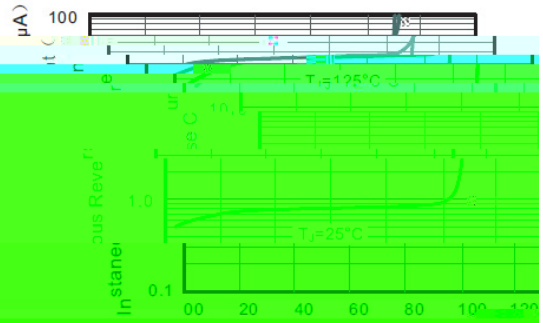


Fig.2 Typical Reverse Characteristics



Temperature (T_J) [°C] Average Rectified Output Current (I_{OUT}) [A]

Fig.3 Typical Forward Characteristics

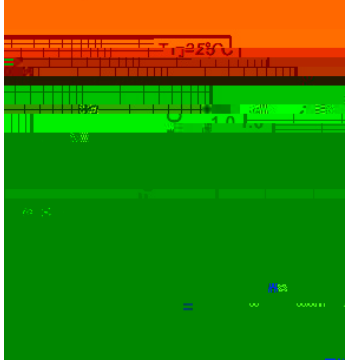
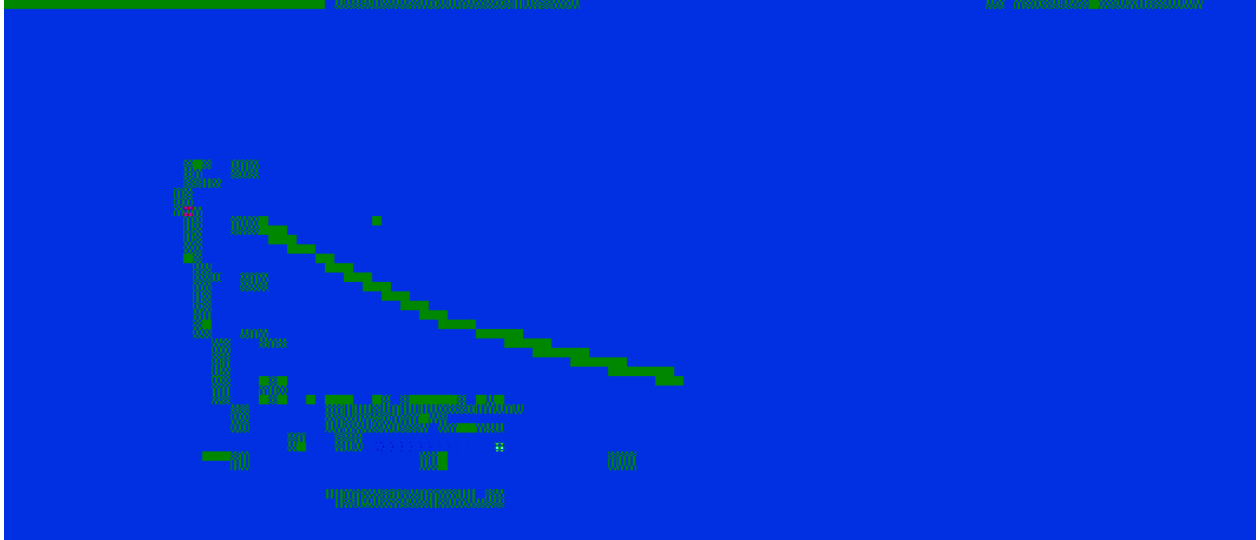
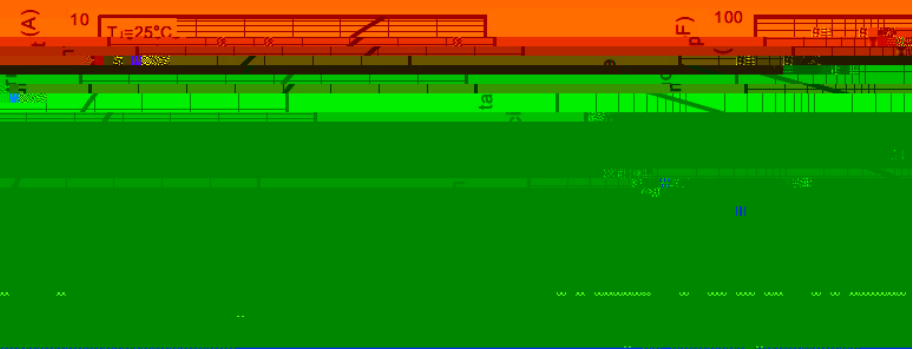


Fig.4 Typical Junction Temperature vs. Peak Reverse Current



ABS/LBF

