

### / Descriptions

KF \$))' = GE G Silicon PNP transistor in a TO-220F Plastic Package.

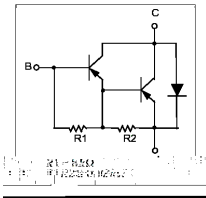
### / Features

K@() =  
Complement to TIP122F.

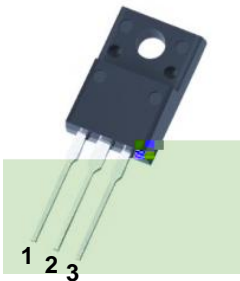
### / Applications

Medium power linear switching applications.

### / Equivalent Circuit



### / Pinning



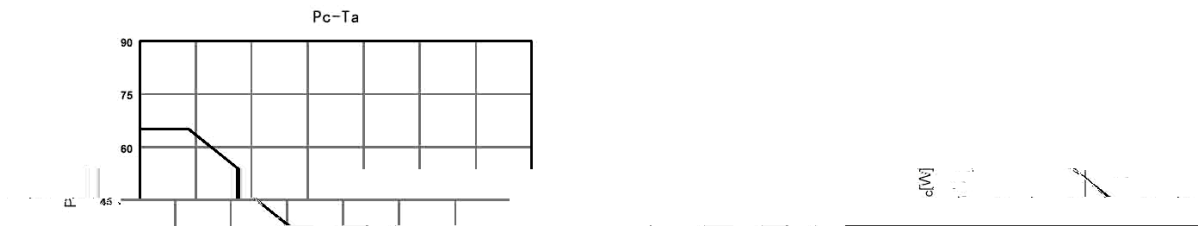
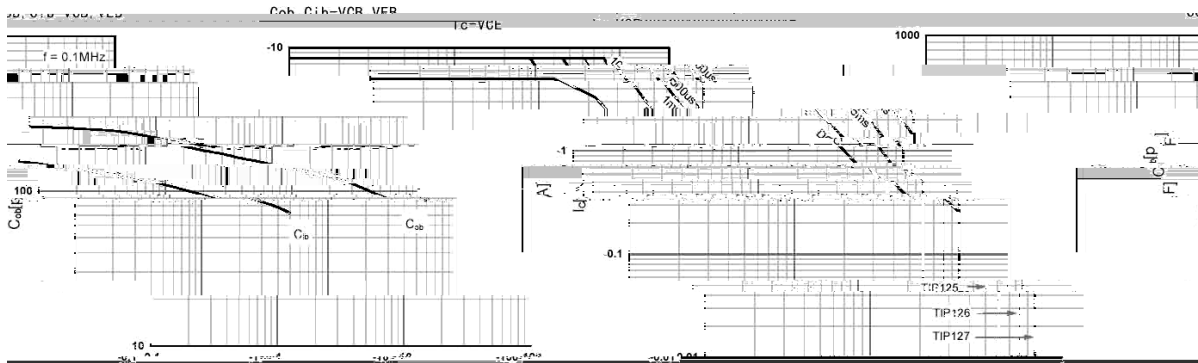
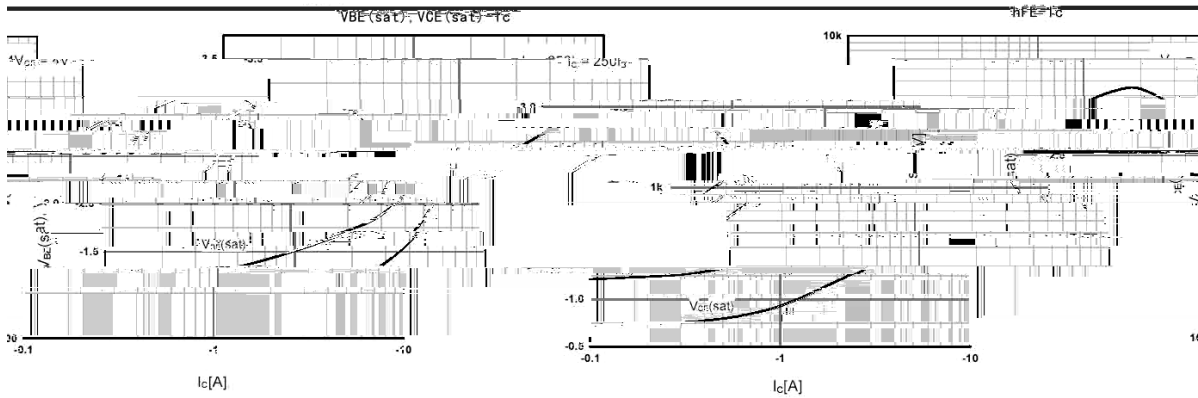
PIN1 Base PIN 2 Collector PIN 3 Emitter

### / h<sub>FE</sub> Classifications & Marking

See Marking Instructions.

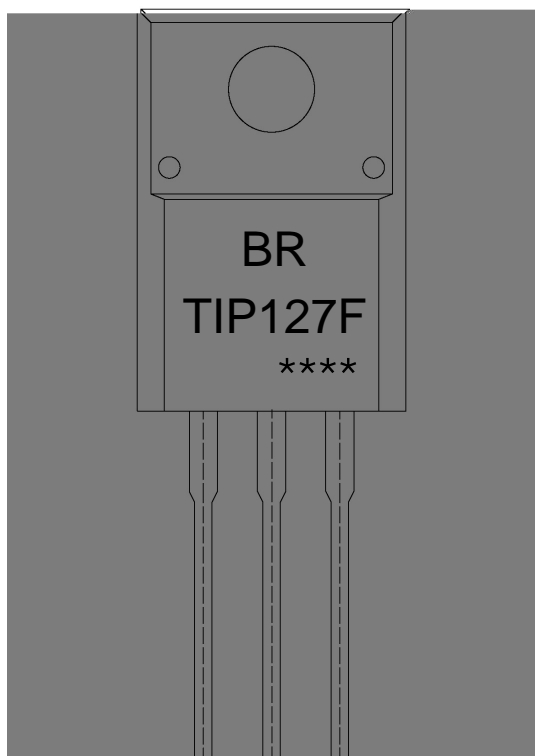
| Parameter                 | Symbol    | Rating | Unit |
|---------------------------|-----------|--------|------|
| Collector to Base Voltage | $V_{CBO}$ | 100    | V    |

/ Electrical Characteristic Curve



**TIP127F**  
Rev.F Mar.-2016

/ Marking Instructions



91

K@() =

!!!!

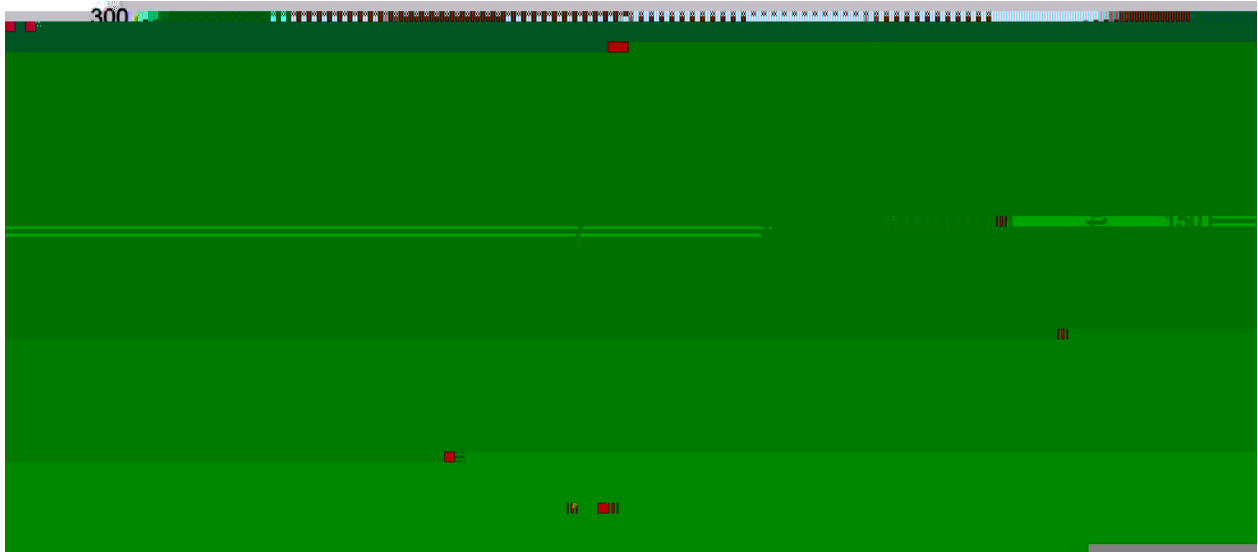
Note:

BR: Company Code.

TIP127F: Product Type Code.

\*\*\*\*: Lot No. Code, code change with Lot No.

( ) / Temperature Profile for Dip Soldering(Pb-Free)



Note:

- |   |        |     |            |        |   |
|---|--------|-----|------------|--------|---|
| 1 | 25     | 150 | 60         | 90sec; | 1.Preheating:25~150 , Time:60~90sec.      |
| 2 | 255..5 |     | 5..0.5sec; |        | 2.Peak Temp.:255..5 , Duration:5..0.5sec. |
| 3 |        | 2   | 10         | /sec.  | 3. Cooling Speed: 2~10 /sec.              |

/ Resistance to Soldering Heat Test Conditions

270..5                      10..1 sec.                      Temp:270±5                      Time:10±1 sec

/ Packaging SPEC.

/ BULK

| Package Type | Units       |                  |                   |                         |                   | Dimension (unit mm3) |             |             |
|--------------|-------------|------------------|-------------------|-------------------------|-------------------|----------------------|-------------|-------------|
|              | Units/Bag / | Bags/Inner Box / | Units/Inner Box / | Inner Boxes/Outer Box / | Units/Outer Box / | Bag                  | Inner Box   | Outer Box   |
| TO-220F      | 200         | 10               | 2,000             | 5                       | 10,000            | 135×190              | 237×172×102 | 560×245×195 |

/ TUBE

| Package Type | Units | Dimension (unit mm3) |
|--------------|-------|----------------------|
|--------------|-------|----------------------|