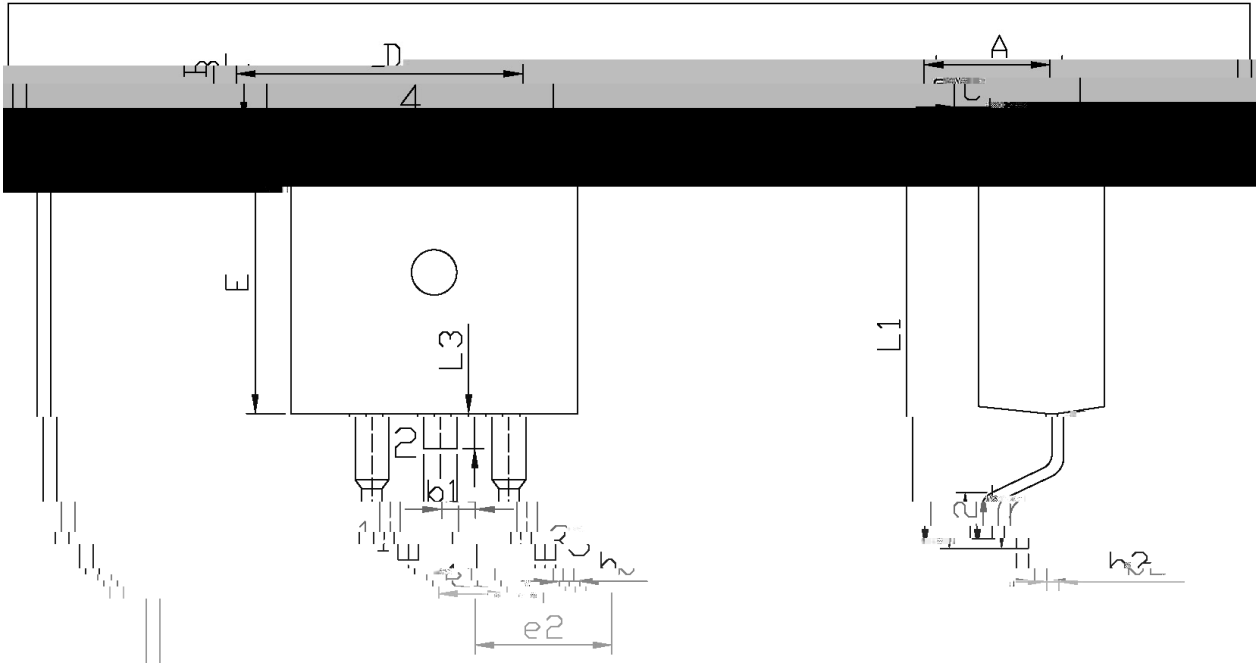


Parameter	Symbol	Rating	Unit
Collector to Base Voltage	V_{CBO}	100	V
Collector to Emitter Voltage	V_{CEO}	100	V
Emitter to Base Voltage	V_{EBO}	5	V
Collector Current - Continuous	I_C	6	A
Peak Collector Current	I_{CP}	10	A
Base Current - Continuous	I_B	2	A
Collector Power Dissipation	P_C	2	W
Collector Power Dissipation	$P_C (T_c=25 \text{ }^\circ\text{C})$	65	W
Junction Temperature	T_j	150	
Storage Temperature Range	T_{sag}	-55 150	

Parameter	Symbol	Test Conditions	Min	Typ	Max	Unit
Collector to Emitter Breakdown V						

TIP41CB
Rev.F May.-2016

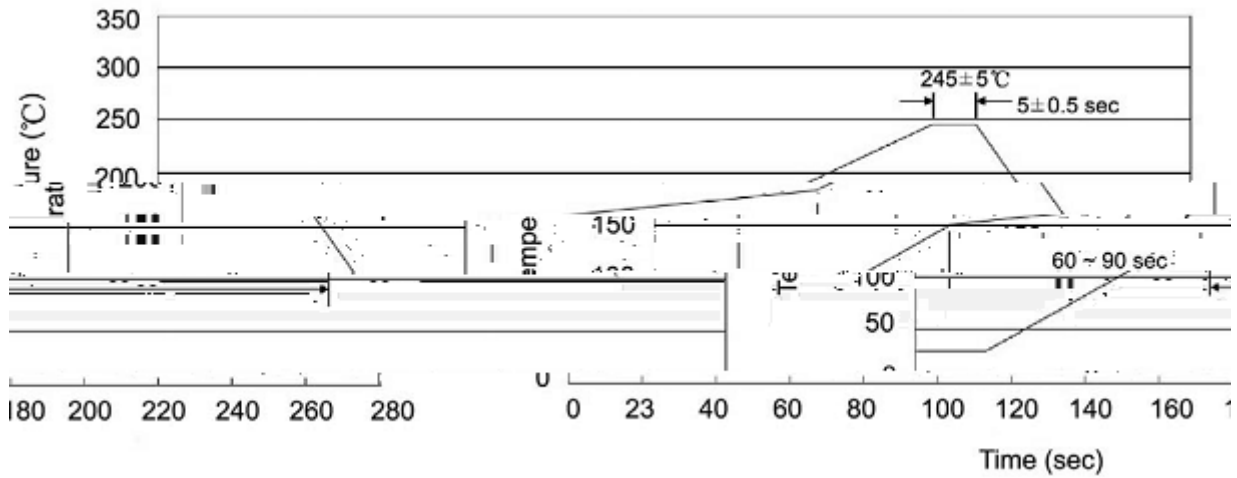
/ Package Dimensions



單位: mm

Dimensions (in Millimeters)		Dimensions (in Millimeters)	
Max	Min	Max	Min
9.40	4.30	4.70	9.00
2.74	1.00	1.40	2.34
16.00	1.15	1.35	1.15

() / Temperature Profile for Dip Soldering(Pb-Free)



Note:

- | | | | | | |
|---|--------|-----|------------|----------|---|
| 1 | 25 | 150 | 60 | 90sec; | 1.Preheating:25~150 , Time:60~90sec. |
| 2 | 245..5 | | 5..0.5sec; | | 2.Peak Temp.:245..5 , Duration:5..0.5sec. |
| 3 | | | 2 | 10 /sec. | 3. Cooling Speed: 2~10 /sec. |

/ Resistance to Soldering Heat Test Conditions

260..5 10..1 sec. Temp.:260±5 Time:10±1 sec

/ Packaging SPEC.

/ REEL

Package Type	Units					Dimension (unit mm ³)		
	Units/Reel	Reels/Inner Box	Units/Inner Box	Inner Boxes/Outer Box	Units/Outer Box	Reel	Inner Box	Outer Box
TO-263	800	1	800	5	4,000	13 ×24	360×360×50	385×257×392

/ TUBE

Package Type	Units					Dimension (unit mm ³)		
	Units/Tube	Tubes/Inner Box	Units/Inner Box	Inner Boxes/Outer Box	Units/Outer Box	Tube	Inner Box	Outer Box
TO-263	50	20	1,000	5	5,000	532×33×7.0	555×164×50	575×290×180

/ Notices